

ADBW240VGC - WELD HM AD 9-13 VAR. SHADE CAN

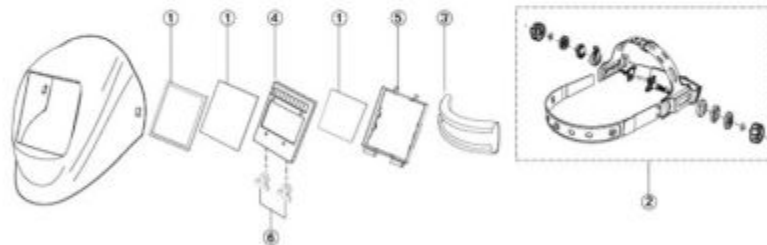
SHADE GUIDE TABLE (NO.1)

Welding Process	ARC CURRENT (Amperes)																								
	0.5	2.5	10	20	40	80	125	175	225	275	350	450	1	5	15	30	60	100	150	200	250	300	400	500	
SMAW																9	10	11	12	13	14				
MIG(heavy)																									
MIG(light)																									
TIG,GTAW																									
MAG/CO2																									
SAW																									
PAC																									
PAW																									

NOTE:

SMAW – Shielded Metal Arc Welding	TIG, GTAW – Gas Tungsten Arc Welding
MIG (Heavy) – MIG on Heavy Metals	MIG (Light) – MIG on Light Alloys
PAW – Plasma Arc Welding	PAC – Plasma Arc Cutting
SAW – Shielded Semi-Automatic Arc Welding	MAG/CO2 – Metal Active Gas

PARTS LIST & ASSEMBLY



Reference Number	Description	Part No.
1	Front cover lens kit — 4 Front/2 inner lens covers and rubber seal	MAV244LK
2	Head Gear	MHG18
3	Sweatband	MJB18
4	Replacement AD Lens	ADRL240
5	Retaining frame	RF18
6	Batteries(2pcs)	CR2450

Item: ADBW240VGC

Description: WELD HM AD 9-13 VAR. SHADE CAN

Notes: N/A

Figure No	Part Number	Description	No. Reqd	Warranty Code
1	MAV244LK	LENS KIT FOR (ADBW244VG-D) 4 F	1	T
2	MHG18	HEAD GEAR	1	B
3	MJB18	WELDING HELMET HEAD BAND	1	T
4	*JYADRL240	REPLACEMENT AD LENS	1	
5	JYRF18	RETAINING FRAME F/PBW10,ADBW18	1	X
6	*JYMMCR2450	BATTERIES (2PC)	2	