



WARNING



Study, understand and follow all instructions provided with this product. Read these instructions carefully before installing, operating, servicing or repairing this tool. Keep these instructions in a safe, accessible place.

INTENDED USE OF THE TOOL

WEAR WORK GLOVES (RUBBER COATED PREFERRED) FOR GRIPPING THE ADAPTER. This tool is designed to be used in drills chucks to set blind rivets up to 1/4" in aluminum, steel and copper, and up to 7/32" in stainless steel. Do not use this tool outside of the designed intent. Never modify the tool for any other purpose or use.



WARNING



Caution: To help prevent personal injury

- Use of this product can expose you to chemicals including ethylene glycol, gasoline vapors and engine exhaust, which are known to the State of California to cause cancer, birth defects, or reproductive harm. For more information, visit www.P65Warnings.ca.gov. Always wear ANSI approved safety equipment, safety glasses and clothing when using this product. Study, understand, and follow all instructions provided with this product. Failure to read and follow all warnings and operating instructions may result in damages and serious injury or death.
- Always wear ANSI approved goggles when using this product (users and bystanders).
- Never use this tool for any application other than for which it was designed.
- Only use accessories designed for this tool.
- Never alter or modify this tool in any way.
- Improper operation and/or maintenance of the tool, modification of the tool, or use of the tool with accessories not designed for it could result in serious injury or death.
- Always select the correct accessories of the correct size and design for the job that you are attempting to perform.
- Always work in a clean, safe, well-lit, organized and adequately equipped area.
- Do not begin repairs without assurance that vehicle is in secure position, and will not move during repair.



Made in China
to Matco specifications

1 YEAR LIMITED WARRANTY

The manufacturer warrants this product to the original user against defective material or workmanship for a period of 1 year from the date of purchase.

The manufacturer reserves the right to determine whether the part or parts failed because of defective material, workmanship or other causes. Failures caused by accident, alteration, or misuse are not covered by this warranty.

The manufacturer, at its discretion, will repair or replace products covered under this warranty free of charge. Repairs or replacements of products covered under this warranty are warranted for the remainder of the original warranty period.

The manufacturer or its authorized service representatives must perform all warranty repairs. Any repair to the product by unauthorized service representatives voids this warranty. The rights under this warranty are limited to the original user and may not be transferred to subsequent owners.

This warranty is in lieu of all other warranties, expressed or implied, including warranties of merchantability and fitness for a particular purpose. Some states do not allow the exclusion or limitations of incidental or consequential damages, so the above limitations may not apply to you.

BEFORE USE

When unpacking, check the parts diagram and part number listing on page 4 to make sure all parts are included. If any parts are missing or damaged, please call your distributor.

PRODUCT INFORMATION:

- **Adaptability.** Easily convert your cordless, pneumatic or corded drill into a power pop riveter.
- **Versatility.** Includes nose pieces for 3/32", 1/8", 5/32", 3/16", 7/32" and 1/4" for steel, aluminum and copper, or up to 7/32" in stainless.
- **Durability.** Features large shielded bearings and billet aluminum machined body.
- Works on up to 8-6" rivet bodies, with a maximum stroke of 0.7".

DO NOT DISCARD – GIVE TO USER

I. PRODUCT TECHNICAL DATA:

Set Includes: 1 Main Body, Assorted Metric or Imperial Nosepieces, 1 Hex Wrench, 1 User's Manual, 1 Blow Mold Case

Hex shank: 6.35mm (1/4")

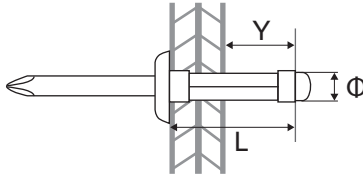
Rivet Type: Blind "Pop" Rivet

Weight: 2.0 lbs.

Riveting Capability:

	Rivet Size Φ		Limit	Aluminum	Steel/Copper	Stainless Steel
	Capacity / Limits	2.4mm		3/32"	Y < 1/2"	✓
3.2mm		1/8"	✓	✓		✓
4.0mm		5/32"	✓	✓		✓
4.8mm		3/16"	✓	✓		✓
6.0mm		7/32"	✓	✓		✓
6.4mm		1/4"	✓	✓		

Stroke Limit: Maximum 0.7" (Y should be less than 1/2" in most cases, beyond 0.6" may cause rivet mandrel to bottom out inside tool and jam)



Working Torque: Refer to section **III. Operation Guide (Page 3)**

Recommended RPM: Low speed, driver setting (<600 RPM)

Temperature Range: -20~120°C (-4~248°F)

Requirements of Driving Tools:

- Adjustable torque setting
- Chuck capacity of hex 6.35mm (1/4") shank
- Minimum 12V for aluminum and steel rivets up to 3/16"
- Minimum 14.4V for stainless steel rivets up to 3/16" and through 1/4" in aluminum
- Minimum 16V+ for 7/32" in steel and stainless and 1/4" in steel (1/4" stainless mandrel and body is not recommended and may overheat the tool)

Requirements of electric or pneumatic driving tool:

- Chuck capacity of hex 6.35mm (1/4") shank
- With maximum torque > 190 in. lbs. for aluminum and steel rivets up to 3/16" and 7/32" and 1/4" in aluminum
- With maximum torque > 330 in. lbs. for stainless steel rivets up to 3/16" and 7/32" and 1/4" in steel

II. SAFETY GUIDE:

1. For safety, read the USER'S MANUAL carefully before use of the riveting adapter.
2. Wear adequate protective gear including ANSI approved goggles and thick work gloves.
3. Only use the riveting adapter with driving tool that matches with requirements specified on Product Technical Data.
4. Switch off the driving tool before installing or uninstalling the riveting adapter.
5. The objects to be riveted **MUST BE SECURED BEFORE** riveting in order to avoid possible injury. Unsecured objects may rotate with the driving tool if not secured.
6. The driving tool **MUST** be stopped if user releases the adapters body during riveting.
7. During Maintenance and or when necessary, be careful in the disassembly of inner plunger tube as there is a pre-loaded spring inside.

III. OPERATION GUIDE:

WARNING: WEAR WORK GLOVES (RUBBER COATED PREFERRED) FOR GRIPPING THE ADAPTER

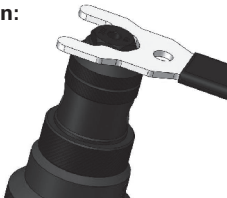
WARNING: The objects to be riveted **MUST BE SECURED BEFORE** riveting in order to avoid possible injury. Unsecured objects may rotate with the driving tool if not secured.

IMPORTANT: Before using the rivet adapter on your intended workpiece, use the adapter on a blind rivet without a workpiece by holding the tool in the air to ensure your drill is powerful enough and on the correct settings to pop a rivet.

- Note that riveting on a work piece will require at least 20 in. lbs. more torque than this test.

CRITICAL: Your rivet **MUST NOT** require more than the maximum stroke limit of this tool, which is 18mm (0.7"). Ensure your drill is in "driver" mode and not drill mode.

1. Tool Installation:



Swap the nose piece for the rivet size if the installed nose piece does not match your intended rivet size, then tighten it onto the adapter with the wrench. Check and confirm other components are tightly fixed in position; insert the hex shank into the driving tool chuck. Tighten firmly and switch the driving tool to low speed mode.

2. Riveting:

- 2.1 Hold the adapter with one hand and operate your driving tool with the other in REV until an audible clicking sound comes from the adapter tool.
- 2.2 Release the trigger; check and confirm from the inspection hole on the front tube that the plunger tube inside is at the maximum forward position.
- 2.3 Insert the rivet mandrel into the center hole of the nose piece, and make sure the size of the rivet matches the nose piece.
- 2.4 Make sure there is no space between the nose piece and rivet flange.
- 2.5 Switch to the FWD direction of the driving tool.
- 2.6 Hold the adapter with one hand and lightly pull the trigger of the driving tool with your other hand to have the mandrel slightly gripped by the adapter, preventing the inserted rivet from falling out.
- 2.7 Insert the rivet body into the drilled hole where it is to be riveted, and position the adapter aligned with the hole as best you can.
- 2.8 Grip the adapter firmly (**wear work gloves**) and then pull the trigger on the driving tool until the mandrel is popped off of the rivet.
- 2.9 Reverse the direction of the driving tool to release and expose the remaining rivet mandrel. Depending on the greasing of the tools jaw pieces, the mandrel may or may not fall out on its own.

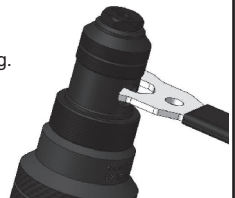
Tip: Use low RPM for better control of riveting quality.

IV. MAINTENANCE:

1. Cleaning and lubricating:

- 1.1 The riveting adapter is lubricated before shipping.

Recommended: cleaning the components of plunger tube, and re-lubricating its parts on at least a yearly basis.



- 1.2 Recommended: cleaning the plunger tube and re-lubricating its parts when replacing worn-out chuck jaw pieces.

2. Chuck jaw pieces replacement:

life span of chuck jaw pieces varies with usage frequency and the uses of different rivet sizes/types. Recommended: replacing the chuck jaw pieces before they are worn-out to prevent jams.

⚠️ ADVERTENCIA ⚠️

Estudie, entienda y siga todas las instrucciones que se proveen con este producto. Lea las instrucciones detenidamente antes de instalar, operar, dar servicio o reparar esta herramienta. Guarde estas instrucciones en un lugar seguro y accesible.

APLICACIÓN DE LA HERRAMIENTA

WEAR WORK GLOVES (RUBBER COATED PREFERRED) FOR GRIPPING THE ADAPTER. This tool is designed to be used in drills chucks to set blind rivets up to 1/4" in aluminum, steel and copper, and up to 7/32" in stainless steel. No use esta herramienta fuera de la intención de su diseño. Nunca modifique la herramienta para ningún otro propósito o uso.

⚠️ ADVERTENCIA ⚠️

- El uso de este producto puede exponerlo a productos químicos que incluyen etilenglicol, vapores de gasolina y gases de escape del motor, que en el estado de California son causantes de cáncer, defectos de nacimiento o daños reproductivos. Para obtener más información, visite www.P65Warnings.ca.gov. Siempre use equipo de seguridad aprobado por ANSI, gafas de seguridad y ropa cuando use este producto. Estudie, comprenda y siga todas las instrucciones proporcionadas con este producto. Si no lee y sigue todas las advertencias e instrucciones de funcionamiento puede ocasionar daños y lesiones graves o la muerte.
- Siempre use guantes del tipo aprobado por la ANSI para trabajar con esta herramienta. (tanto usuarios como espectadores).
- Nunca utilice esta herramienta para cualquier otra cosa que no sean las aplicaciones para lo que fue diseñada.
- Sólo utilice los accesorios diseñados para esta herramienta.
- No modifique o altere esta herramienta de ninguna manera.
- El funcionamiento y/o mantenimiento inadecuado de la herramienta, la modificación, o la utilización de la herramienta con accesorios inadecuados podrían causar lesiones graves o la muerte.
- Siempre usar los correctos accesorios para el trabajo que Ud. está realizando.
- Trabaje siempre en un área limpia, segura, bien iluminada, organizada y equipada adecuadamente.



HECHO en China
para Matco especificaciones

GARANTÍA LIMITADA DE UN AÑO

El fabricante garantiza este producto al usuario original contra defectos de materiales o de mano de obra durante un periodo de un año a partir de la fecha de compra.

El fabricante se reserva el derecho a determinar si una pieza o piezas fallaron debido a material defectuoso, mano de obra, o por otras causas.

Esta garantía no cubre fallas causadas por accidentes, alteraciones o uso indebido.

El fabricante, a su entera discreción, reparará o reemplazará los productos cubiertos por esta garantía sin costo alguno. Las reparaciones o reemplazos de productos cubiertos por esta garantía quedan garantizados durante el resto del periodo original de garantía. El fabricante o sus representantes autorizados de servicio deben llevar a cabo todas las reparaciones de garantía. Toda reparación hecha al producto por representantes de servicio no autorizados invalida la presente garantía. Los derechos que ampara esta garantía están limitados al usuario original y no se pueden transferir a dueños posteriores.

Esta garantía reemplaza a todas las demás garantías expresas o implícitas, incluyendo garantías de comercialización e idoneidad para un propósito particular. Algunos estados no permiten la exclusión o limitaciones de daños incidentales o imprevistos, de manera que las limitaciones mencionadas anteriormente pueden no ser aplicables en su caso.

DESEMPACADO

Cuando desempaque el producto, revise el diagrama y la lista de piezas en página 4 para verificar que se hayan enviado todas las piezas. De perder piezas o tener piezas dañadas, favor llamar a su distribuidor inmediatamente.

INFORMACIÓN DEL PRODUCTO:

- **Adaptability.** Easily convert your cordless, pneumatic or corded drill into a power pop riveter.
- **Versatility.** Includes nose pieces for 3/32", 1/8", 5/32", 3/16", 7/32" and 1/4" for steel, aluminum and copper, or up to 7/32" in stainless.
- **Durability.** Features large shielded bearings and billet aluminum machined body.
- **Works on up to 8-6" rivet bodies, with a maximum stroke of 0.7".**

NO LO DESCARTE O DESECHE, ENTREGUESELO AL USUARIO

I. PRODUCT TECHNICAL DATA:

Set Includes: 1 Main Body, Assorted Metric or Imperial Nosepieces, 1 Hex Wrench, 1 User's Manual, 1 Blow Mold Case

Hex shank: 6.35mm (1/4")

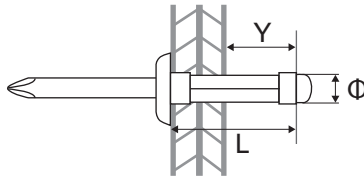
Rivet Type: Blind "Pop" Rivet

Weight: 2.0 lbs.

Riveting Capability:

Capacity / Limits	Rivet Size Φ		Limit	Aluminum	Steel/Copper	Stainless Steel
		2.4mm		3/32"	✓	✓
	3.2mm	1/8"	✓	✓	✓	
	4.0mm	5/32"	✓	✓	✓	
	4.8mm	3/16"	✓	✓	✓	
	6.0mm	7/32"	✓	✓	✓	
	6.4mm	1/4"	✓	✓		

Stroke Limit: Maximum 0.7" (Y should be less than 1/2" in most cases, beyond 0.6" may cause rivet mandrel to bottom out inside tool and jam)



Working Torque: Refer to section III. **Operation Guide (Page 3)**

Recommended RPM: Low speed, driver setting (<600 RPM)

Temperature Range: -20~120°C (-4~248°F)

Requirements of Driving Tools:

- Adjustable torque setting
- Chuck capacity of hex 6.35mm (1/4") shank
- Minimum 12V for aluminum and steel rivets up to 3/16"
- Minimum 14.4V for stainless steel rivets up to 3/16" and through 1/4" in aluminum
- Minimum 16V+ for 7/32" in steel and stainless and 1/4" in steel (1/4" stainless mandrel and body is not recommended and may overheat the tool)

Requirements of electric or pneumatic driving tool:

- Chuck capacity of hex 6.35mm (1/4") shank
- With maximum torque > 190in. lbs. for aluminum and steel rivets up to 3/16" and 7/32" and 1/4" in aluminum
- With maximum torque > 330in. lbs. for stainless steel rivets up to 3/16" and 7/32" and 1/4" in steel

II. SAFETY GUIDE:

1. For safety, read the USER'S MANUAL carefully before use of the riveting adapter.
2. Wear adequate protective gear including ANSI approved goggles and thick work gloves.
3. Only use the riveting adapter with driving tool that matches with requirements specified on Product Technical Data.
4. Switch off the driving tool before installing or uninstalling the riveting adapter.
5. The objects to be riveted **MUST BE SECURED BEFORE** riveting in order to avoid possible injury. Unsecured objects may rotate with the driving tool if not secured.
6. The driving tool **MUST** be stopped if user releases the adapters body during riveting.
7. During Maintenance and or when necessary, be careful in the disassembly of inner plunger tube as there is a pre-loaded spring inside.

III. OPERATION GUIDE:

WARNING: WEAR WORK GLOVES (RUBBER COATED PREFERRED) FOR GRIPPING THE ADAPTER

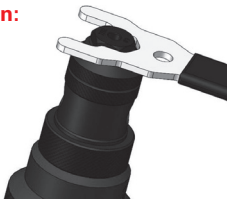
WARNING: The objects to be riveted **MUST BE SECURED BEFORE** riveting in order to avoid possible injury. Unsecured objects may rotate with the driving tool if not secured.

IMPORTANT: Before using the rivet adapter on your intended workpiece, use the adapter on a blind rivet without a workpiece by holding the tool in the air to ensure your drill is powerful enough and on the correct settings to pop a rivet.

- Note that riveting on a work piece will require at least 20 in. lbs. more torque than this test.

CRITICAL: Your rivet **MUST NOT** require more than the maximum stroke limit of this tool, which is 18mm (0.7"). Ensure your drill is in "driver" mode and not drill mode.

1. Tool Installation:



Swap the nose piece for the rivet size if the installed nose piece does not match your intended rivet size, then tighten it onto the adapter with the wrench. Check and confirm other components are tightly fixed in position; insert the hex shank into the driving tool chuck. Tighten firmly and switch the driving tool to low speed mode.

2. Riveting:

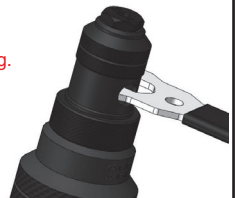
- 2.1 Hold the adapter with one hand and operate your driving tool with the other in REV until an audible clicking sound comes from the adapter tool.
- 2.2 Release the trigger; check and confirm from the inspection hole on the front tube that the plunger tube inside is at the maximum forward position.
- 2.3 Insert the rivet mandrel into the center hole of the nose piece, and make sure the size of the rivet matches the nose piece.
- 2.4 Make sure there is no space between the nose piece and rivet flange.
- 2.5 Switch to the FWD direction of the driving tool.
- 2.6 Hold the adapter with one hand and lightly pull the trigger of the driving tool with your other hand to have the mandrel slightly gripped by the adapter, preventing the inserted rivet from falling out.
- 2.7 Insert the rivet body into the drilled hole where it is to be riveted, and position the adapter aligned with hole as best you can.
- 2.8 Grip the adapter firmly (**wear work gloves**) then pull the trigger on the driving tool until the mandrel is popped off of the rivet.
- 2.9 Reverse the direction of the driving tool to release and expose the remaining rivet mandrel. Depending on the greasing of the tools jaw pieces, the mandrel may or may not fall out on its own.

Tip: Use low RPM for better control of riveting quality.

IV. MAINTENANCE:

1. Cleaning and lubricating:

- 1.1 The riveting adapter is lubricated before shipping. Recommended: cleaning the components of plunger tube, and re-lubricating its parts on at least a yearly basis.



- 1.2 Recommended: cleaning the plunger tube and re-lubricating its parts when replacing worn-out chuck jaw pieces.

2. Chuck jaw pieces replacement:

life span of chuck jaw pieces varies with usage frequency and the uses of different rivet sizes/types. Recommended: replacing the chuck jaw pieces before they are worn-out to prevent jams.

⚠️ AVERTISSEMENT ⚠️

Étudier, comprendre et suivre toutes les instructions fournies avec ce produit. Lire ces instructions attentivement avant d'installer, d'utiliser, d'entretenir et de réparer cet outil. Conserver ces instructions dans un endroit sécuritaire et accessible.

Utilisation prévue

WEAR WORK GLOVES (RUBBER COATED PREFERRED) FOR GRIPPING THE ADAPTER. This tool is designed to be used in drills chucks to set blind rivets up to 1/4" in aluminum, steel and copper, and up to 7/32" in stainless steel. N'utilisez pas cet outil en dehors de l'intention prévue. Ne modifiez jamais l'outil à d'autres fins ou utilisations.

⚠️ Mesure de sécurité ⚠️

Mise en garde : Pour aider à prévenir les blessures

- L'utilisation de ce produit peut vous exposer à des produits chimiques, notamment l'éthylène glycol, les vapeurs d'essence et les gaz d'échappement des moteurs, qui sont reconnus par l'État de Californie pour causer le cancer, des anomalies congénitales ou des problèmes de reproduction. Pour plus d'informations, visitez www.P65Warnings.ca.gov. Toujours porter un équipement de sécurité, des lunettes de sécurité et des vêtements homologués ANSI lors de l'utilisation de ce produit. Étudier, comprendre et suivre toutes les instructions fournies avec ce produit. Ne pas lire et suivre tous les avertissements et instructions d'utilisation peut entraîner des dommages et des blessures graves ou la mort.
- Toujours porter des lunettes à coques approuvées par l'ANSI lorsque vous utilisez ce produit.
- Toujours utiliser les accessoires adéquats pour le travail que vous effectuez.
- Toujours travailler dans un environnement propre, sécuritaire, bien éclairé, organisé et suffisamment équipé.



Fabriqué à Chine
les spécifications de Matco

GARANTIE À VIE

Le fabricant garantit à l'acheteur initial que ce produit est exempt de tout vice de matériau et de fabrication pendant une période de une année suivant la date de l'achat.

Le fabricant se réserve le droit de déterminer si la pièce ou les pièces ont échoué en raison d'un défaut de matériau, de fabrication ou d'autres causes.

Les défauts causés par un accident, une altération ou un mauvais usage ne sont pas couverts par cette garantie.

Les remplacements sous garantie comportent également une garantie à vie. Les droits sous cette garantie sont limités à l'utilisateur original et ne peuvent être transférés aux propriétaires suivants.

La garantie remplace toutes les autres garanties, explicites ou implicites, y compris les garanties de qualité marchande et d'adéquation à un usage particulier. Certains états ne permettent pas l'exclusion ou les limitations De dommages accessoires ou consécutifs, de sorte que les limitations ci-dessus peuvent ne pas s'appliquer à vous.

DÉBALLAGE

Lors du déballage, vérifier que les pièces contenues dans le schéma et la liste des numéros de pièces de la page 4 sont toutes incluses. Si une pièce est manquante ou abîmée, veuillez appeler immédiatement votre distributeur.

INFORMATIONS PRODUIT:

- **Adaptability.** Easily convert your cordless, pneumatic or corded drill into a power pop riveter.
- **Versatility.** Includes nose pieces for 3/32", 1/8", 5/32", 3/16", 7/32" and 1/4" for steel, aluminum and copper, or up to 7/32" in stainless.
- **Durability.** Features large shielded bearings and billet aluminum machined body.
- Works on up to 8-6" rivet bodies, with a maximum stroke of 0.7".

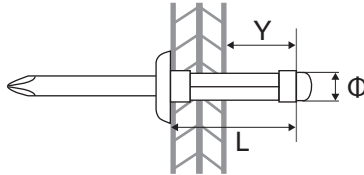
NE PAS JETER-DONNER À L'UTILISATEUR

I. PRODUCT TECHNICAL DATA:

- Set Includes: 1 Main body, Assorted metric or imperial nosepieces, 1 Hex wrench,
1 User's manual, 1 Blow mold case
- Hex shank: 6.35mm (1/4")
- Rivet Type: Blind "Pop" Rivet
- Weight: 2.0 lbs
- Riveting Capability:

	Rivet Size Φ		Limit	Aluminum	Steel/Copper	Stainless Steel
	Capacity / Limits	2.4mm		3/32"	Y < 1/2"	✓
3.2mm		1/8"	✓	✓		✓
4.0mm		5/32"	✓	✓		✓
4.8mm		3/16"	✓	✓		✓
6.0mm		7/32"	✓	✓		✓
6.4mm		1/4"	✓	✓		

- Stroke Limit: Maximum 0.7" (Y should be less than 1/2" in most cases, beyond 0.6" may cause rivet mandrel to bottom out inside tool and jam)



- Working Torque: Refer to section III. **Operation Guide (Page 3)**
- Recommended RPM: Low speed, driver setting (<600 RPM)
- Temperature Range: -20~120°C (-4~248°F)
- Requirements of Driving Tools:
- Adjustable torque setting.
 - Chuck capacity of hex 6.35 mm (1/4") shank.
 - Minimum 12V for aluminum and steel rivets up to 3/16".
 - Minimum 14.4V for stainless steel rivets up to 3/16" and thru 1/4" in aluminum.
 - Minimum 16V+ for 7/32" in steel and stainless and 1/4" in steel. (1/4" stainless mandrel and body is not recommended and may overheat the tool)
- Requirements of electric or pneumatic driving tool:
- Chuck capacity of hex 6.35 mm (1/4") shank.
 - With maximum torque > 190 in/lbs for aluminum and steel rivets up to 3/16" and 7/32" + 1/4" in aluminum.
 - With maximum torque > 330 in/lbs for stainless steel rivets up to 3/16" and 7/32" + 1/4" in steel.

II. SAFETY GUIDE:

1. For safety, read the USER'S MANUAL carefully before use of the riveting adapter.
2. Wear adequate protective gear including ANSI approved goggles and thick work gloves.
3. Only use the riveting adapter with driving tool that matches with requirements specified on Product Technical Data.
4. Switch off the driving tool before installing or uninstalling the riveting adapter.
5. The objects to be riveted **MUST BE SECURED BEFORE** riveting in order to avoid possible injury. Unsecured objects may rotate with the driving tool if not secured.
6. The driving tool **MUST** be stopped if user releases the adapters body during riveting.
7. During Maintenance and or when necessary, be careful in the disassembly of inner plunger tube as there is a pre-loaded spring inside.

III. OPERATION GUIDE:

WARNING: WEAR WORK GLOVES (RUBBER COATED PREFERRED) FOR GRIPPING THE ADAPTER

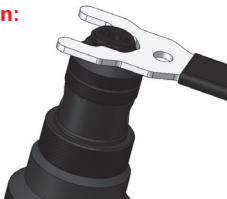
WARNING: The objects to be riveted **MUST BE SECURED BEFORE** riveting in order to avoid possible injury. Unsecured objects may rotate with the driving tool if not secured.

IMPORTANT: Before using the rivet adapter on your intended workpiece, use the adapter on a blind rivet without a workpiece by holding the tool in the air to ensure your drill is powerful enough and on the correct settings to pop a rivet.

- Note that riveting on a work piece will require at least 20 in. lbs. more torque than this test.

CRITICAL: Your rivet **MUST NOT** require more than the maximum stroke limit of this tool, which is 18mm (0.7"). Ensure your drill is in "driver" mode and not drill mode.

1. Tool Installation:



Swap the nose piece for the rivet size if the installed nose piece does not match your intended rivet size, then tighten it onto the adapter with the wrench. Check and confirm other components are tightly fixed in position; insert the hex shank into the driving tool chuck. Tighten firmly and switch the driving tool to low speed mode.

2. Riveting:

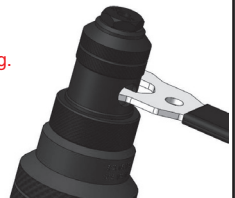
- 2.1 Hold the adapter with one hand and operate your driving tool with the other in REV until an audible clicking sound comes from the adapter tool.
- 2.2 Release the trigger; check and confirm from the inspection hole on the front tube that the plunger tube inside is at the maximum forward position.
- 2.3 Insert the rivet mandrel into the center hole of the nose piece, and make sure the size of the rivet matches the nose piece.
- 2.4 Make sure there is no space between the nose piece and rivet flange.
- 2.5 Switch to the FWD direction of the driving tool.
- 2.6 Hold the adapter with one hand and lightly pull the trigger of the driving tool with your other hand to have the mandrel slightly gripped by the adapter, preventing the inserted rivet from falling out.
- 2.7 Insert the rivet body into the drilled hole where it is to be riveted, and position the adapter aligned with hole as best you can.
- 2.8 Grip the adapter firmly (**wear work gloves**) then pull the trigger on the driving tool until the mandrel is popped off of the rivet.
- 2.9 Reverse the direction of the driving tool to release and expose the remaining rivet mandrel. Depending on the greasing of the tools jaw pieces, the mandrel may or may not fall out on its own.

Tip: Use low RPM for better control of riveting quality.

IV. MAINTENANCE:

1. Cleaning and lubricating:

- 1.1 The riveting adapter is lubricated before shipping. Recommended: cleaning the components of plunger tube, and re-lubricating its parts on at least a yearly basis.

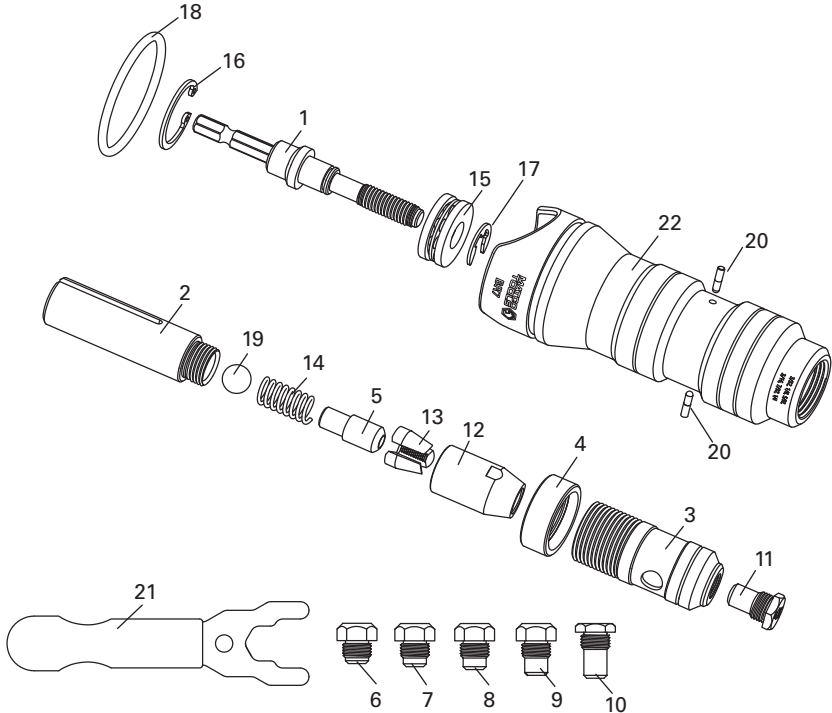


- 1.2 Recommended: cleaning the plunger tube and re-lubricating its parts when replacing worn-out chuck jaw pieces.

2. Chuck jaw pieces replacement:

- life span of chuck jaw pieces varies with usage frequency and the uses of different rivet sizes/types. Recommended: replacing the chuck jaw pieces before they are worn-out to prevent jams.

PARTS BREAKDOWN



Parts List

Index	Part No.	Description	Qty
1	ADN14-01	Hex Shank Driving Shaft	1
2	ADR36-02	Plunger Tube	1
3	ADR14-02	Front Bushing w/Knurling	1
4	ADR36-04	Locking Bushing	1
5	ADR36-05	Plunger	1
6	ADR36-3/32N	3/32" Nosepiece	1
7	ADR36-1/8N	1/8" Nosepiece	1
8	ADR36-5/32N	5/32" Nosepiece	1
9	ADR36-3/16N	3/16" Nosepiece	1
10	ADR14-1/4N	1/4" Nosepiece	1
11	ADR14-7/32N	7/32" Nosepiece	1

Index	Part No.	Description	Qty
12	ADR14-03	Chuck Jaw Tubing	1
13	ADR36-12	Chuck Jaws Pieces(3pcs)	1
14	ADR14-04	Inner Spring	1
15	RN9-25	Thrust Ball Bearing	1
16	ADN14-26	C-Clip	1
17	ADN14-27	E-Clip	1
18	RN9-30	O-Ring	1
19	ADR36-17	Steel Ball	1
20	ADN14-29	Pins	2
21	ADN14-31	Wrench Kit	1
22	BR7-01	Aluminum Handle	1