



OWNER'S MANUAL

Model No. CSHDP

Save This Manual For Future Reference

MECHANICS STOOL

DESCRIPTION

Mechanics Stool is ergonomically engineered. Designed for exceptional wear and durability. Stool is practical for many applications.

Frame of 1" tube steel and epoxy powder coated black. 3" diameter soft tread casters provide ease of movement on hard surfaces. Casters are non-marking and oil-resistant to withstand harsh environments.

ASSEMBLY INSTRUCTIONS

1. Unpack your stool and account for all parts.
2. Push casters (Key No. 1) into bottom holes in frame (Key No. 2).
NOTE: Make sure all four casters are properly seated into holes in bottom of frame.
3. Place seat (Key No. 6) upside down on a work surface. Insert four spacers (Key No. 3) in four outside holes in bottom of seat. Position back brace of frame towards back of seat. Align four holes in tube on frame with four holes in seat. Attach seat using phillips pan head screws and flat washers (Key Nos. 4 and 5). Securely tighten all four screws to seat.

GENERAL SAFETY INSTRUCTIONS

- Do not stand on seat.
- Stool must be on level surface to ensure proper stability.
- Only use stool when fully assembled.
- Periodically check fasteners and tighten securely if needed.
- Never use stool if it does not perform according to this manual.
- Do not exceed stool maximum weight capacity of 400 pounds.

INDUSTRIAL SEATING LIMITED WARRANTY

Product is warranted against mechanical or structural failure due to defective material or workmanship for 1 year. Provided however, this warranty lasts only so long as you own your product. If you sell or otherwise transfer the product this warranty terminates automatically. Products that are damaged or made unserviceable by accidents, abuse, misuse or are altered in anyway are not covered by this warranty.

Matco Tools reserves the right to replace or recondition at its option, any units covered by this warranty. All return shipments require Material Return Authorization and must be freight prepaid unless otherwise approved in writing.

If any product covered under this warranty fails to meet the terms of this warranty or it is in any respect broken, defective or missing parts, please call us immediately at toll free 1-866-289-8665. Any attempts to make unauthorized repairs will void this warranty in every respect.

This warranty gives you specific legal rights. You may have other rights which vary from state to state, however such implied rights are limited to a period of one year from the date of your initial purchase. Some states do not allow limitations on how long an implied warranty lasts, so the above limitation may not apply to you.

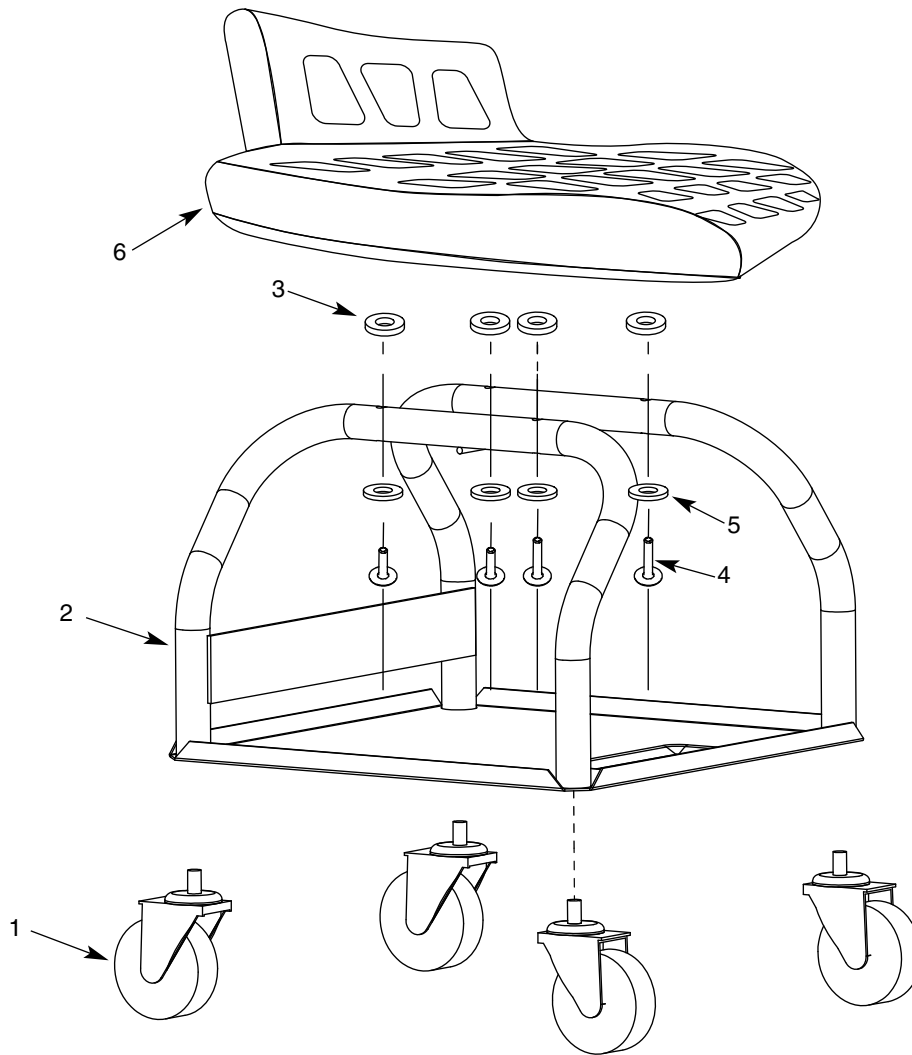
Matco Tools will in no event be liable for incidental or consequential damages for any amount in excess of the original purchase price. Some states do not allow exclusion or limitation of such damages, so the above limitation or exclusion may not apply to you.

HOW TO ORDER REPAIR PARTS

When ordering repair parts or reporting problems, always give the following information:

NAME OF ITEM	MODEL NUMBER
Mechanics Stool	CSHDP
PART DESCRIPTION	PART NUMBER
_____	_____

All parts listed may be ordered from Matco Tools® Customer Service at 1-866-289-8665.



KEY NO.	DESCRIPTION	QTY.	PART NO.
1	Caster	4	10342.01
2	Frame	1	11004.00
3	Spacer	4	01771.00
4	6-1.0 × 45 mm Phillips Pan Head Screw	4	11011.00
5	6 mm Flat Washer	4	10421.00
6	Seat	1	11002.00