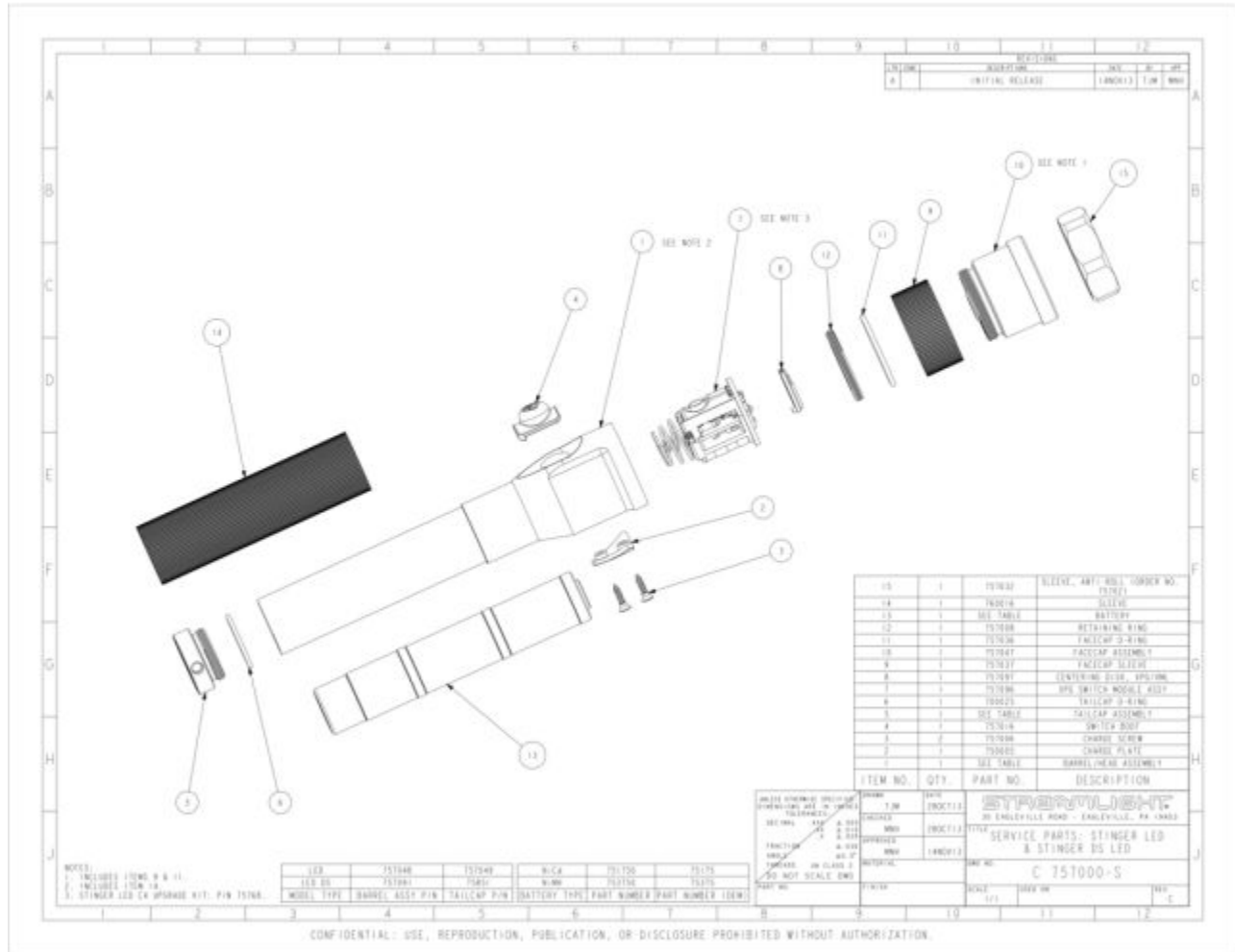


## M95052 - MATCO STINGER LED LIME -LIGHT



Item: M95052

Description: MATCO STINGER LED LIME -LIGHT

Notes: N/A

| Figure No | Part Number | Description                 | No. Reqd | Warranty Code |
|-----------|-------------|-----------------------------|----------|---------------|
| 1         | SO757048    | BARREL / M75713             | 1        | K             |
| 2         | SO750005    | CHARGE PLATE F/M75001       | 1        | X             |
| 3         | SO757006    | CHARGE SCREW F/STINGER      | 2        | X             |
| 4         | SO757016    | SWITCH COVER F/STINGER LED  | 1        | X             |
| 5         | SO757049    | TAIL CAP ASSY F/STINGER     | 1        | E             |
| 6         | SO700025    | TAIL CAP O RING F/M75001    | 1        | X             |
| 7         | *SO757096   | XPG SWITCH MODULE           | 1        |               |
| 8         | *SO757097   | CENTERING DISK              | 1        |               |
| 9         | SO757037    | FACE CAP SLEEVE F/ 75751    | 1        | X             |
| 10        | SO757047    | FACE CAP ASSEMBLY F/ M75713 | 1        | K             |
| 11        | SO757036    | O-RING FACECAP F/M75713     | 1        | X             |
| 12        | SO757008    | RETAINER F/ STINGER LED     | 1        | X             |
| 13        | 75375       | BATTERY STICK - STINGER     | 1        | E             |
| 14        | *SO760016   | SLEEVE                      | 1        |               |
| 15        | *SO757032   | SLEEVE, ANTI-ROLL           | 1        |               |