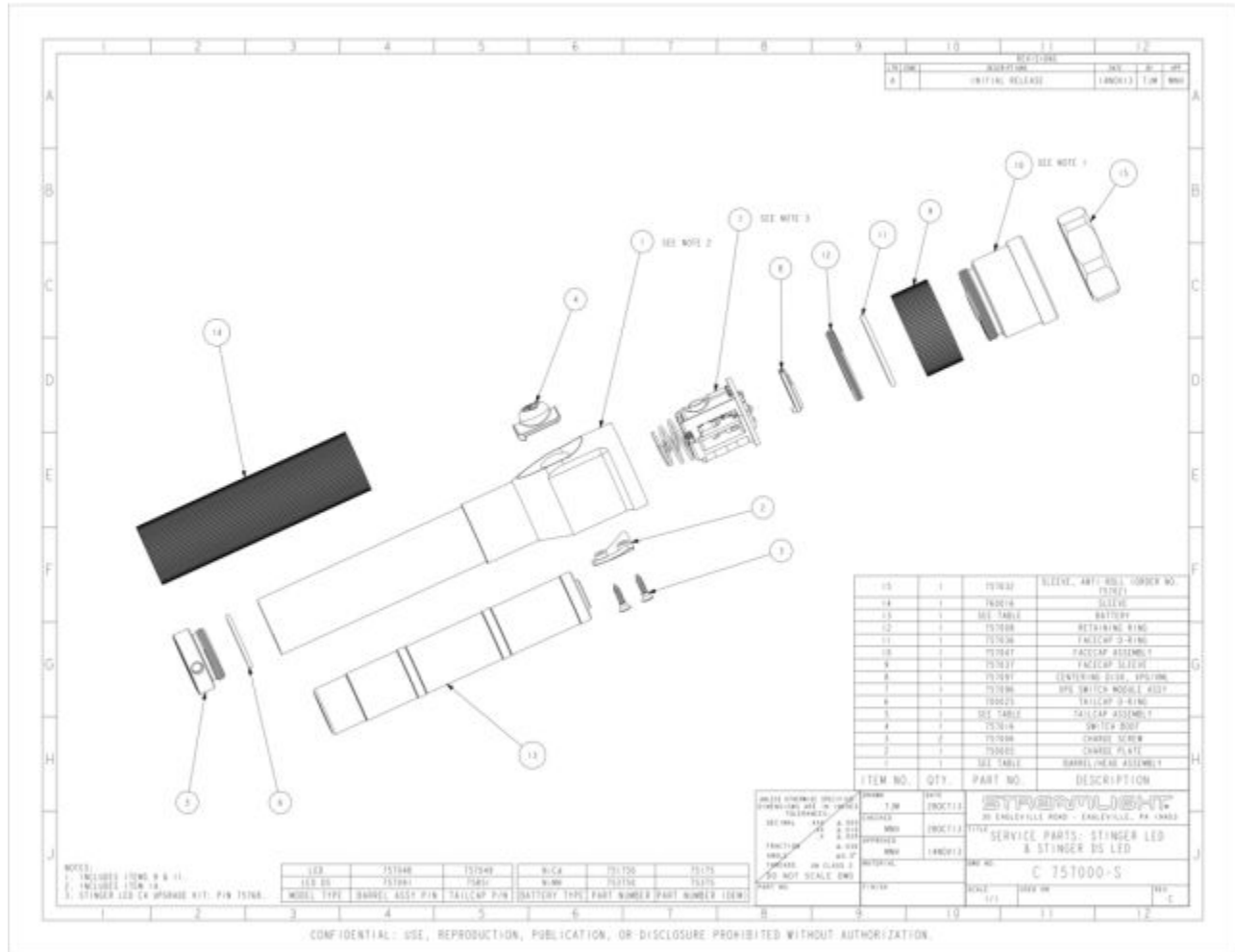


M95108 - MATCO STINGER DS LED PURPLE PB



Item: M95108

Description: MATCO STINGER DS LED PURPLE PB

Notes: N/A

| Figure No | Part Number | Description | No. Reqd | Warranty Code |
|-----------|-------------|------------------------------|----------|---------------|
| 1 | SO757091 | STINGER DS LED BODY ONLY | 1 | K |
| 2 | SO750005 | CHARGE PLATE F/M75001 | 1 | X |
| 3 | SO757006 | CHARGE SCREW F/STINGER | 2 | X |
| 4 | SO757016 | SWITCH COVER F/STINGER LED | 1 | X |
| 5 | SO75851 | PUSH BUTTON TAILCAP F/M75713 | 1 | K |
| 6 | SO700025 | TAIL CAP O RING F/M75001 | 1 | X |
| 7 | *SO757096 | XPG SWITCH MODULE | 1 | |
| 8 | *SO757097 | CENTERING DISK | 1 | |
| 9 | SO757037 | FACE CAP SLEEVE F/ 75751 | 1 | X |
| 10 | SO757047 | FACE CAP ASSEMBLY F/ M75713 | 1 | K |
| 11 | SO757036 | O-RING FACECAP F/M75713 | 1 | X |
| 12 | SO757008 | RETAINER F/ STINGER LED | 1 | X |
| 13 | SO75375 | BATTERY STICK - STINGER | 1 | E |
| 14 | *SO760016 | SLEEVE | 1 | |
| 15 | *SO757032 | ANTI ROLL SLEEVE | 1 | |