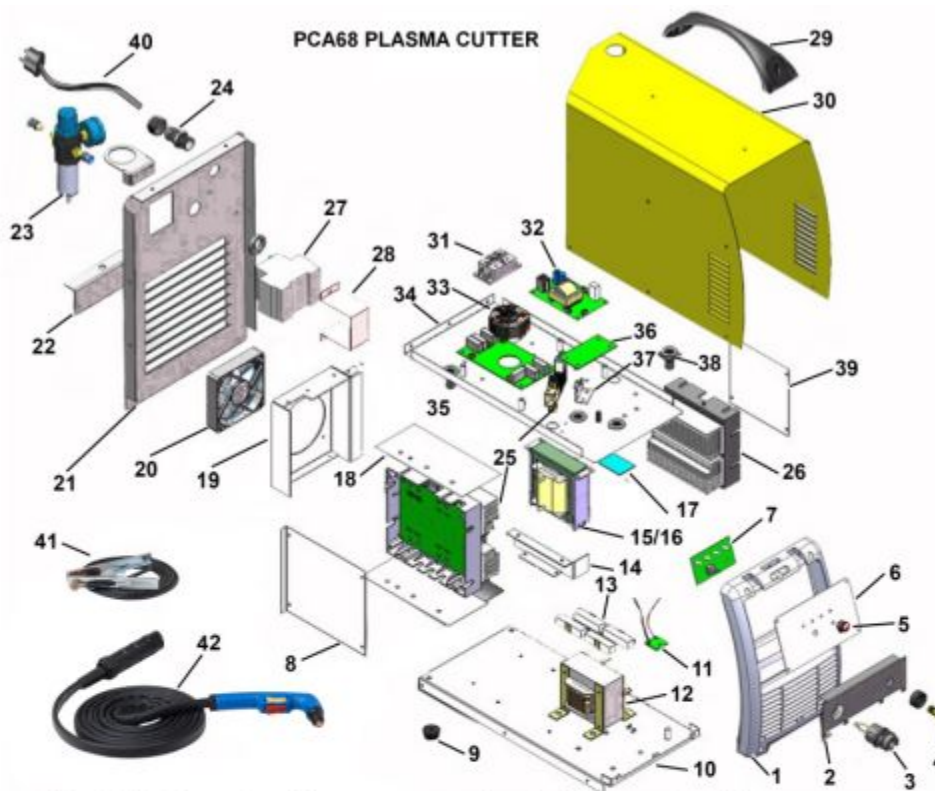


MA68 - 60A PLASMA CUT 3/4" (230VAC)



#	Part Code	Description	#	Part Code	Description
1	768.0101	Frame - front panel	21	768.0121	Frame - rear panel
2	768.0102	Torch mount panel	22	768.0122	Bracket - drain hose
3	768.0103	Central adaptor socket	23	738.1014	Air regulator w/gauge
4	768.0104	3550 Panel socket F	24	768.0124	Strain relief - Med.
5	768.0105	Knob (output pwr)	25	768.0125	MUR module assembly
6	768.0106	Front panel PCA68	26	768.0126	IGBT module assembly
7	768.0107	Control panel PCB	27	768.0127	Switch main pwr. breaker
8	768.0108	MUR module back plate	28	768.0128	Power switch mount
9	768.0109	Machine foot rubber	29	768.0129	Handle machine
10	768.0110	Cabinet base	30	768.0130	Cabinet cover
11	768.0111	Safety switch - OUT	31	768.0131	Bridge rectifier
12	768.0112	Inductor transformer	32	768.0132	Input power board
13	768.0113	Ceramic resistor pack	33	768.0133	AC Line filter coil
14	768.0114	Support plate	34	768.0134	Cabinet upper shelf
15	768.0115	Main transformer	35	768.0135	Air solenoid valve
16	768.0116	Bracket main transformer	36	768.0136	Control board (single phase)
17	768.0117	Insulator transformer	37	768.0137	Mounting plate air solenoid
18	768.0118	Cooling shroud	38	768.0138	Grommet - rubber
19	768.0119	Mounting plate - fan	39	768.0139	IGBT module back plate
20	768.0120	Cooling fan	40	748.0010	Power cord NEMA6-50P
41	513N0008	Ground cable 3550	42	907N9668	NPT68 Plasma torch

Item: MA68

Description: 60A PLASMA CUT 3/4" (230VAC)

Notes: N/A

Figure No	Part Number	Description	No. Reqd	Warranty Code
0	SP907N1165	CUTTING TIP 60A EXTENDE 5PK	1	T