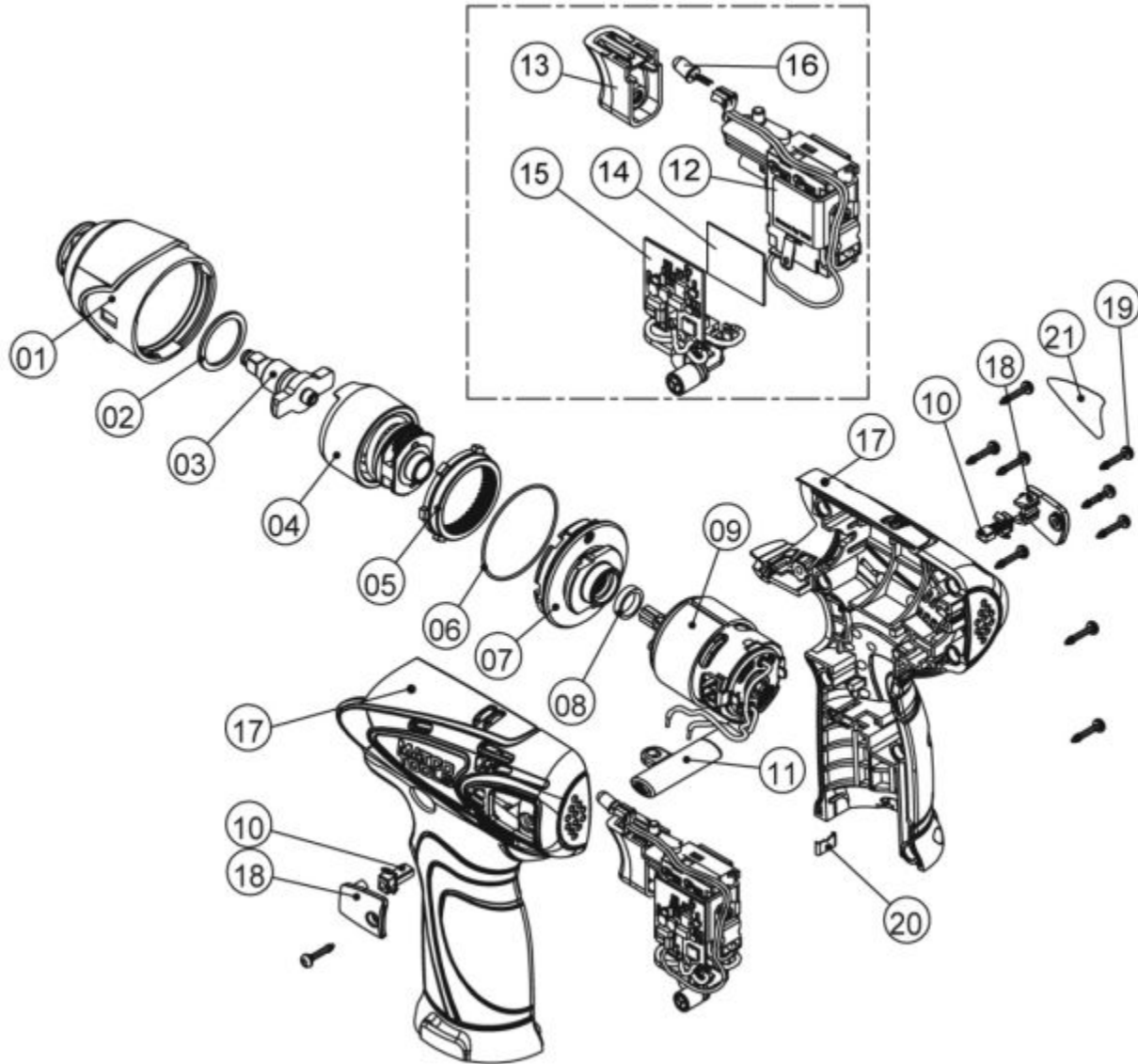


MCL1238IW - 12V CORDLESS INF 3/8 IMPACT WR



Item: MCL1238IW

Description: 12V CORDLESS INF 3/8 IMPACT WR

Notes: N/A

Figure No	Part Number	Description	No. Reqd	Warranty Code
1	K7RS108IW01	HOUSING ASSY FOR MUC108IW	1	X
2	K7RS108IW02	WASHER F/ MUC108IW	1	X
3	K7RS1223803	FRONT IMPACT ASMBLY F/MUC12238	1	X
4	K7RS108IW04	REAR IMPACT ASMBLY F/MUC108	1	X
5	K7RS108IW05	RING GEAR F/MUC108	1	X
6	K7RS108IW06	O RING /MUC108IW	1	X
7	K7RS108IW07	RING GEAR HOLDER F/MUC108IW	1	X
8	K7RS108IW08	RUBBER WASHER /MUC108IW	1	X
9	K7RS12IW09	MOTOR ASSEMBLY FOR MUC12IW	1	X
10	K7RS108DD08	CARBON BRUSH MUC108C	2	X
11	K7RS122ID09	FWD/REVSE ROD F/MUC122	1	X
12	K7RS12DD11	SWITCH F/MUC12IW AND MUC12DD	1	X
13	K7RS07513	TRIGGER FOR MCL1214IW	1	X
14	K7RS12DD12	THERMAL CONDUCTIVE PAD-MUC12IW	1	X
15	K7RS12IW15	PCB ASSEMBLY F/MUC12IW	1	X
16	K7RS1812DD14	LED F/MUC122ID	1	X
17	K7RS13117	HOUSING F/ MCL1214IW	1	X
18	K7RS108IW14	CARBON BRUSH COVER F/MUC108IW	2	X
19	K7RS144IW020	SCREW FOR RS144I	10	X
20	K7RS108DD12	HOUSING CLIP F/ MUC108S	1	X
21	*K7RS45721	HOUSING LABEL - R	1	