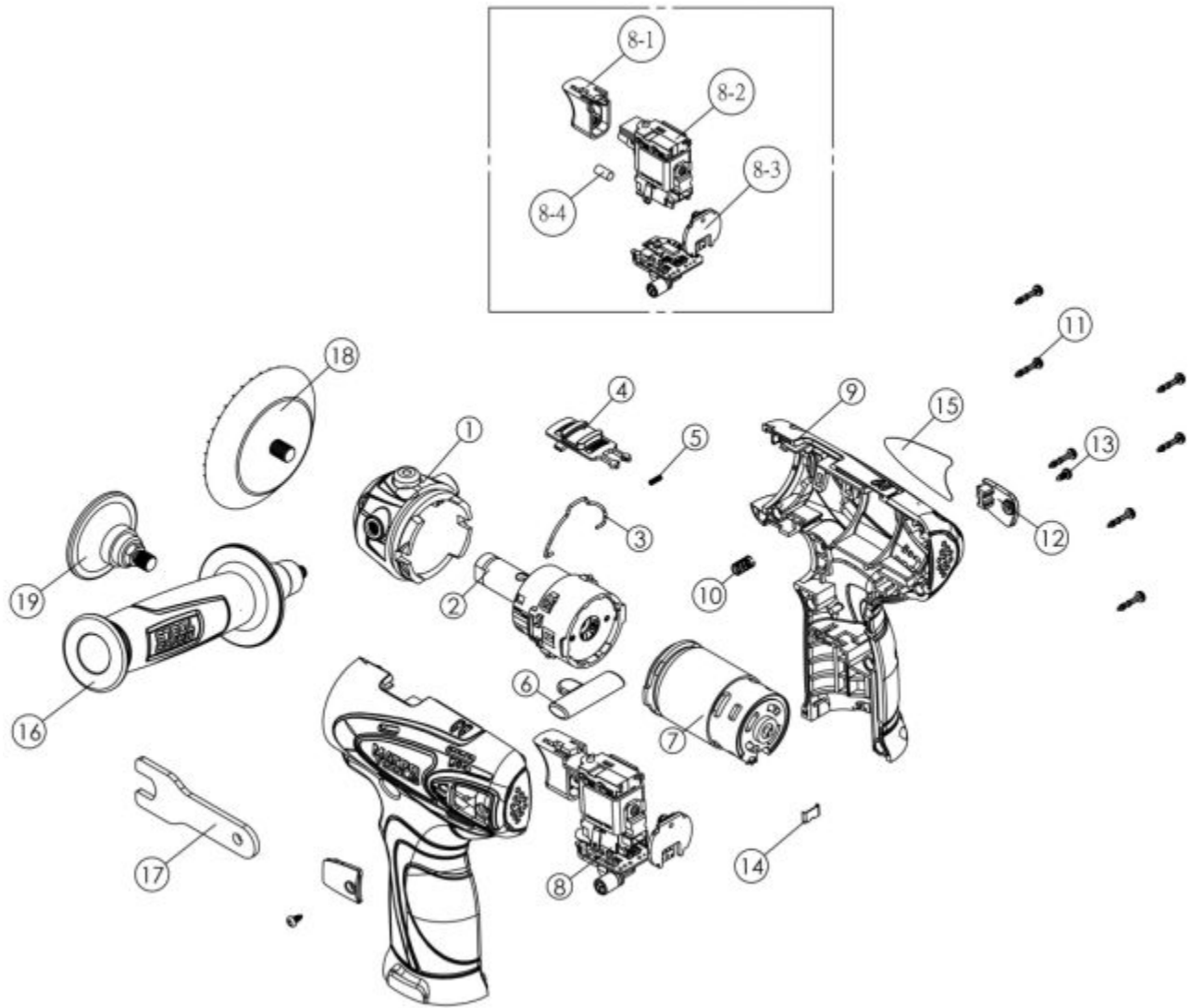


MCL162PK2 - 16V CORDLESS POLISHER KIT



Item: MCL162PK2

Description: 16V CORDLESS POLISHER KIT

Notes: RS162WL Warning Label (Not Shown) 1

Figure No	Part Number	Description	No. Reqd	Warranty Code
1	*K7RS16218	FRONT COVER ASSEMBLY	1	
2	K7RS16220	GEAR BOX ASSEMBLY	2	X
3	K7RS12DD05	SPEED CHANGE SPRING	1	X
4	*K7RS16221	HIGH/LOW SPEED ROD	1	
5	*K7RS22006	ROD SPRING	1	
6	*K7RS16243	SWITCH LOCK ROD	1	
7	*K7RS16246	MOTOR ASSEMBLY	1	
8	*K7RS16253	8-1 TRIGGER	1	
8	*K7RS163821	8-4 HEAT SHRINKAGE TUBE	1	
8	*K7RS16255 Switch	8-2 SWITCH	1	
8	*K7RS16256	PCB ASSEMBLY	1	
8	*K7RS16251	MAIN SWITCH	1	
9	*K7RS16257	HOUSING - L & R	1	
10	*K7RS16258	WASHER	1	
11	K7RS144IW020	SCREW FOR RS144I	7	X
12	*K7RS16259	CARBON BRUSH COVER	2	
13	*K7RS108L09	SCREW	2	
14	K7RS108DD12	HOUSING CLIP F/ MUC108S	1	X
15	*K7RS16260	HOUSING LABEL-R	1	
16	K7RS16261	SIDE HANDLE F/MSCL162PK2	1	X
17	K7RS108MP21	SPANNER WRENCH	1	X
18	K7RS108MP01	PAD F/MUC108MP	1	X
19	MCL16PDH	DISC HOLDER FOR MCL162	1	T