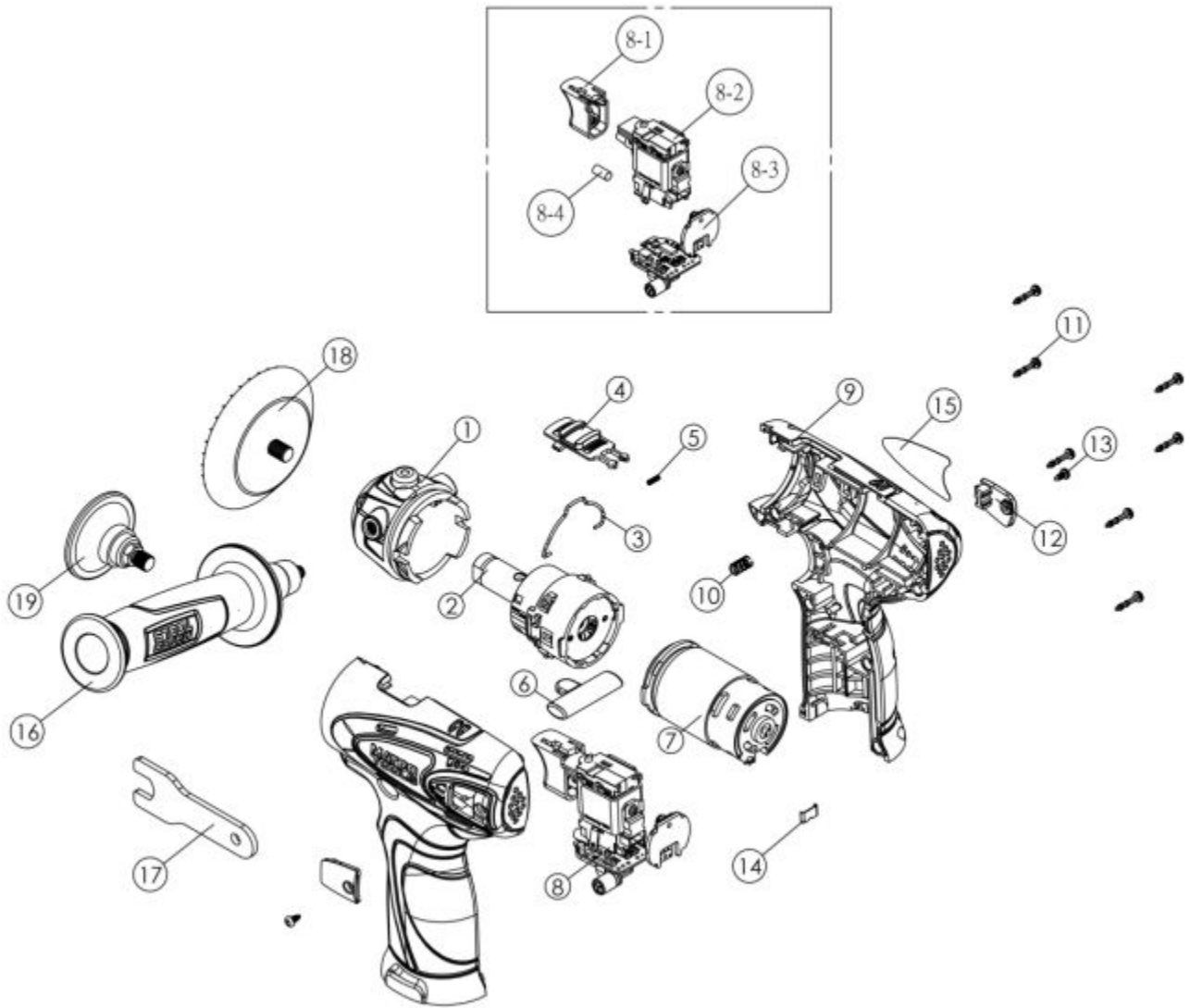


MCL162P - 16V CORDLESS POLISER



Item: MCL162P

Description: 16V CORDLESS POLISHER

Notes: RS162WL Warning Label (Not Shown) 1

| Figure No | Part Number  | Description              | No. Reqd | Warranty Code |
|-----------|--------------|--------------------------|----------|---------------|
| 1         | *K7RS16218   | FRONT COVER ASSEMBLY     | 1        |               |
| 2         | K7RS16220    | GEAR BOX ASSEMBLY        | 1        | X             |
| 3         | K7RS12DD05   | SPEED CHANGE SPRING      | 1        | X             |
| 4         | *K7RS16221   | HIGH/LOW SPEED ROD       | 1        |               |
| 5         | *K7RS22006   | ROD SPRING               | 1        |               |
| 6         | *K7RS16243   | SWITCH LOCK ROD          | 1        |               |
| 7         | *K7RS16246   | MOTOR ASSEMBLY           | 1        |               |
| 8         | *K7RS16251   | MAIN SWITCH              | 1        |               |
| 8         | *K7RS16253   | 8-1 TRIGGER              | 1        |               |
| 8         | *K7RS16255   | 8-2 SWITCH               | 1        |               |
| 8         | *K7RS16256   | 8-3 PCB ASSEMBLY         | 1        |               |
| 8         | *K7RS163821  | 8-4 HEAT SHRINKAGE TUBE  | 1        |               |
| 9         | *K7RS16257   | HOUSING - L & R          | 1        |               |
| 10        | *K7RS16258   | WASHER                   | 1        |               |
| 11        | K7RS144IW020 | SCREW FOR RS144I         | 1        | X             |
| 12        | *K7RS16259   | CARBON BRUSH COVER       | 2        |               |
| 13        | *K7RS108L09  | SCREW                    | 2        |               |
| 14        | K7RS108DD12  | HOUSING CLIP F/ MUC108S  | 1        | X             |
| 15        | *K7RS16260   | HOUSING LABEL-R          | 1        |               |
| 16        | K7RS16261    | SIDE HANDLE F/MSCL162PK2 | 1        | X             |
| 17        | K7RS108MP21  | SPANNER WRENCH           | 1        | X             |
| 18        | K7RS108MP01  | PAD F/MUC108MP           | 1        | X             |
| 19        | MCL16PDH     | DISC HOLDER FOR MCL162   | 1        | T             |