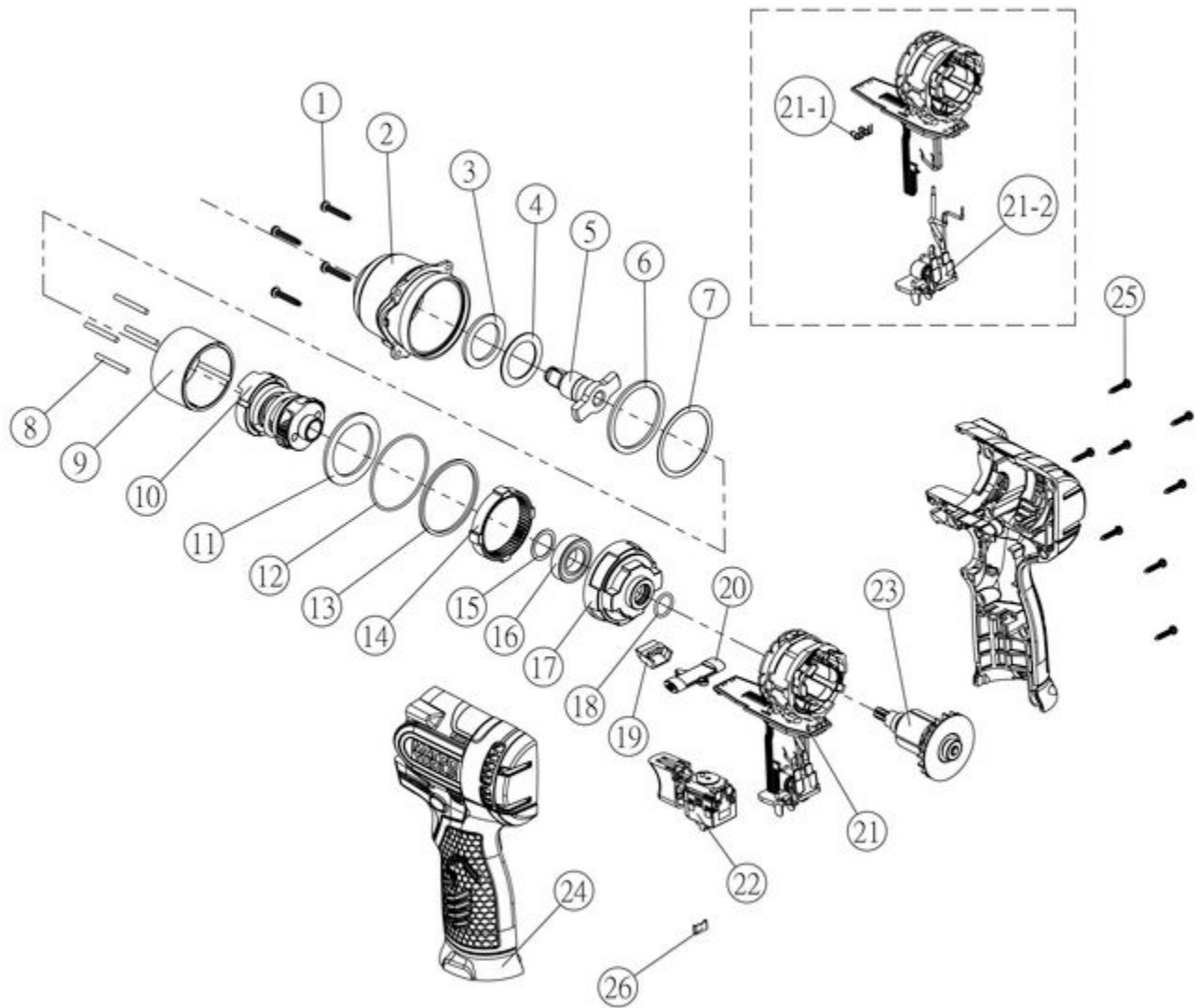


MCL1638HPIW - 16V 3/8" HP IMPACT WRENCH



Item: MCL1638HPIW

Description: 16V 3/8" HP IMPACT WRENCH

Notes: not shown RS1638hpiWPLK Product label kit 1 RS163847O Orange Housing & L&R 1 RS163847G Green Housing & L&R 1 Also available: RS144IW5PK Package of 5 each socket retaining rings and o-rings for front impact assembly

Figure No	Part Number	Description	No. Reqd	Warranty Code
1	K7RS163827	FRONT COVER SCREW F/ MCL1638	4	X
2	K7RS163828	FRONT COVER ASSY MCL16638HPIW	1	X
3	*K7RS144IWHO03	RUBBER WASHER 34X24X1T	1	
4	*K7RS144IWHO04	WASHER 34X24X2T	1	
5	K7RS163829	FRONT IMPACT ASSY 3/8	1	X
6	*K7RS163830	WASHER	1	
7	*K7RS163831	WASHER	1	
8	*K7RS163832	PIN, N3X26.8L	4	
9	*K7RS163833	SUB HAMMER	1	
10	*K7RS163834	REAR IMPACT ASSEMBLY	1	
11	*K7RS163835	WASHER	1	
12	*K7RS163836	O-RING	1	
13	*K7RS163837	WASHER	1	
14	K7RS144IW006	GEAR RING	1	X
15	K7RS144W08	WASHER FOR MPTL144IW	1	X
16	K7RS144W10	BEARING F/MPTL144IW	1	X
17	*K7RS163838	RING GEAR HOUSING	1	
18	*K7RS163839	O-RING 12.3X1.6	1	
19	*K7RS163840	LED HOLDER	1	
20	K7RS163841	FORWARD / REVERSE ROD	1	X
21	*K7RS163842	PCB ASSEMBLY & STATOR ASSEMBLY	1	
21	*K7RS163843	21-1 LED	2	
21	*K7RS163844	21-2 BATTERY CONNECTOR ASSEMBLY	1	
22	K7RS163845	MAIN SWITCH ASSY F/MCL1638HPIW	1	X
23	*K7RS163846	ROTOR ASSEMBLY	1	
24	K7RS163847	L & R HOUSING ASSY F/ MCL1638H	1	X
25	K7RS144IW020	SCREW FOR RS144I	8	X
26	K7RS108DD12	HOUSING CLIP F/ MUC108S	1	X