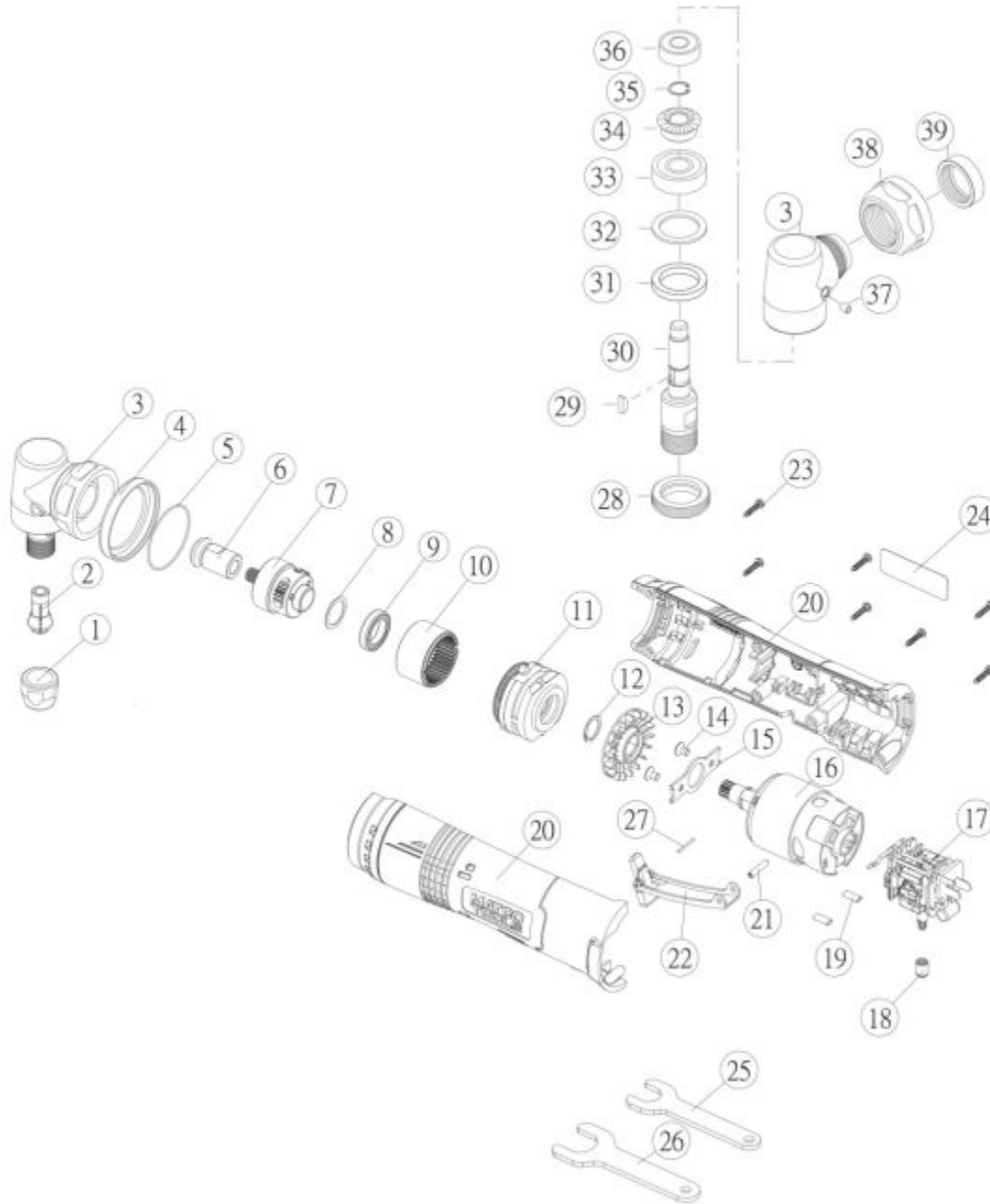


MCL16RDG - 16V RIGHT ANGLE DIE GRINDER



Item: MCL16RDG

Description: 16V RIGHT ANGLE DIE GRINDER

Notes: not shown - RSMCL16RDGPLK Product Label Kit.

Figure No	Part Number	Description	No. Reqd	Warranty Code
1	K7RS20636	1/4" COLLET NUT F/MT2880L	1	X
2	K7RS20635	1/4" COLLET F/MT2880L,MT2883	1	X
3	K7RS288330	ANGLE HSG F/MT2885	1	X
4	*K7RS161604	FRONT COVER	1	
5	K7RS108IW06	O RING /MUC108IW	1	X
6	K7RS288327	BEVEL GEAR F/MT2885	1	X
7	*K7RS161606	SPINDLE ASSEMBLY	1	
8	K7RS108MP03	WASHER	1	X
9	*K7RS161608	BEARING (6802-2RS)	1	
10	*K7RS161609	RING GEAR	1	
11	*K7RS161610	CONNECTOR	1	
12	*K7RS161611	SNAP RING (S15C)	1	
13	*K7RS161612	MOTOR FAN	1	
14	*K7RS161613	SCREW	2	
15	*K7RS161614	WASHER (1.5MM)	1	
16	*K7RS161615	MOTOR ASSEMBLY	1	
17	*K7RS161616	PCB ASSEMBLY	1	
18	*K7RS161617	TRIGGER	1	
19	*K7RS161618	HEAT SHRINKAGE TUBE (4X16MM)	2	
20	K7RS161619	HOUSING F/MCL16RDG	1	X
21	*K7RS161620	TRIGGER PIN (3X16L)	1	
22	K7RS161621	SAFETY LEVER ASSEMBLY F/MCL16R	1	X
23	K7RS108R18	SCREW (TP3X12L) F/ MUC108R	7	X
24	*K7RS161623	HOUSING LABEL - R	1	
25	K7RS161625	SPANNER WRENCH (14MM)	1	X
26	*K7RS161626	SPANNER WRENCH (19MM)	1	
27	*K7RS161624	PIN (1.2X15MM)	1	
28	K7RS288338	CLAMP NUT F/MT2885	1	X
29	K7RS288337	KEY F/MT2885	1	X
30	K7RS288336	SPINDLE F/MT2883	1	X
31	K7RS288335	WASHER F/MT2883	1	X
32	RS2883L43	WASHER	1	X
33	K7RS10920	BALL BEARING MT1430,50,60,1884	1	X

34	K7RS288333	BEVEL GEAR F/MT2885	1	X
35	K7RS288732	SNAP RING /MT2887	1	X
36	K730524	FRONT BEARING	1	X
37	K7RS288331	3/16 OIL CUP F/MT2885	1	X
38	K7RS288329	CLAMP NUT F/MT2885,MT2887	1	X
39	K7RS288328	NUT F/MT2885,MT2887	1	X