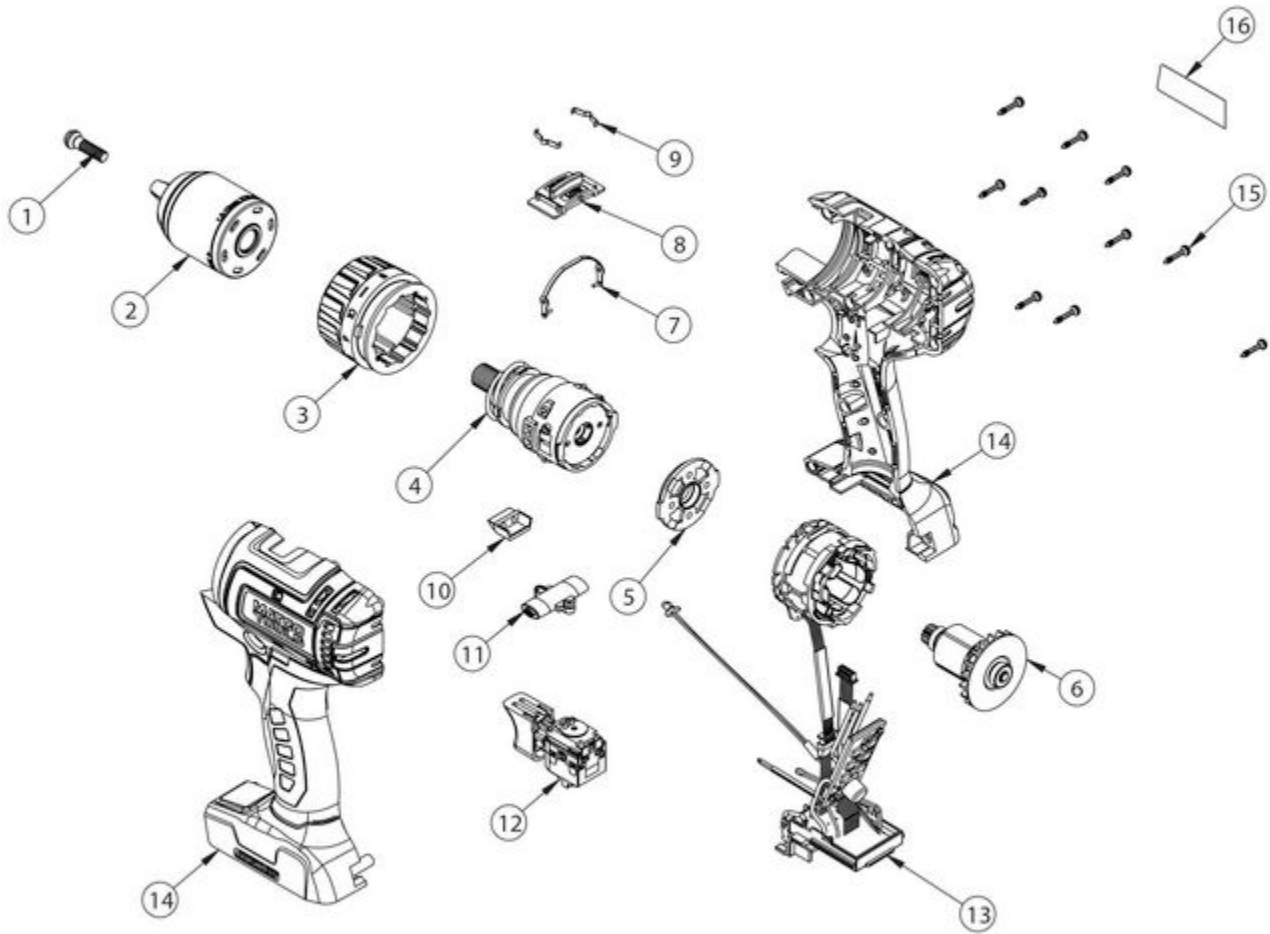


MCL2012BDD - 20V 1/2" BRUSHLESS DRILL DRIVE



Item: MCL2012BDD

Description: 20V 1/2" BRUSHLESS DRILL DRIVE

Notes: N/A

Figure No	Part Number	Description	No. Reqd	Warranty Code
1	K7RS18DD01	CHUCK SCREW F/ MCL18DD	1	X
2	*K7RS201227	1/2" CHUCK [JACOBS]	1	
3	*K7RS201229	TORQUE RING	1	
4	*K7RS201230	GEAR BOX ASS'Y	1	
5	*K7RS201231	MOTOR CONNECTOR	1	
6	*K7RS201232	ROTOR ASS'Y	1	
7	*K7RS201233	SPEED CHANGE SPRING [0.6MM]	1	
8	*K7RS201234	HIGH/LOW SPEED ROD	1	
9	*K7RS201235	SPRING [0.4MM]	2	
10	*K7RS163840	LED HOLDER	1	
11	*K7RS201236	FORWARD/REVERSE ROD	1	
12	*K7RS201237	SWITCH ASS'Y	1	
13	*K7RS201238	ESTATOR ASS'Y + PCB ASS'Y	1	
14	*K7RS201239	HOUSING W/ GRIP-L&R	1	
15	K7RS144IW020	SCREW FOR RS144I	10	X
16	*K7RS201240	HOUSING LABEL-R	1	