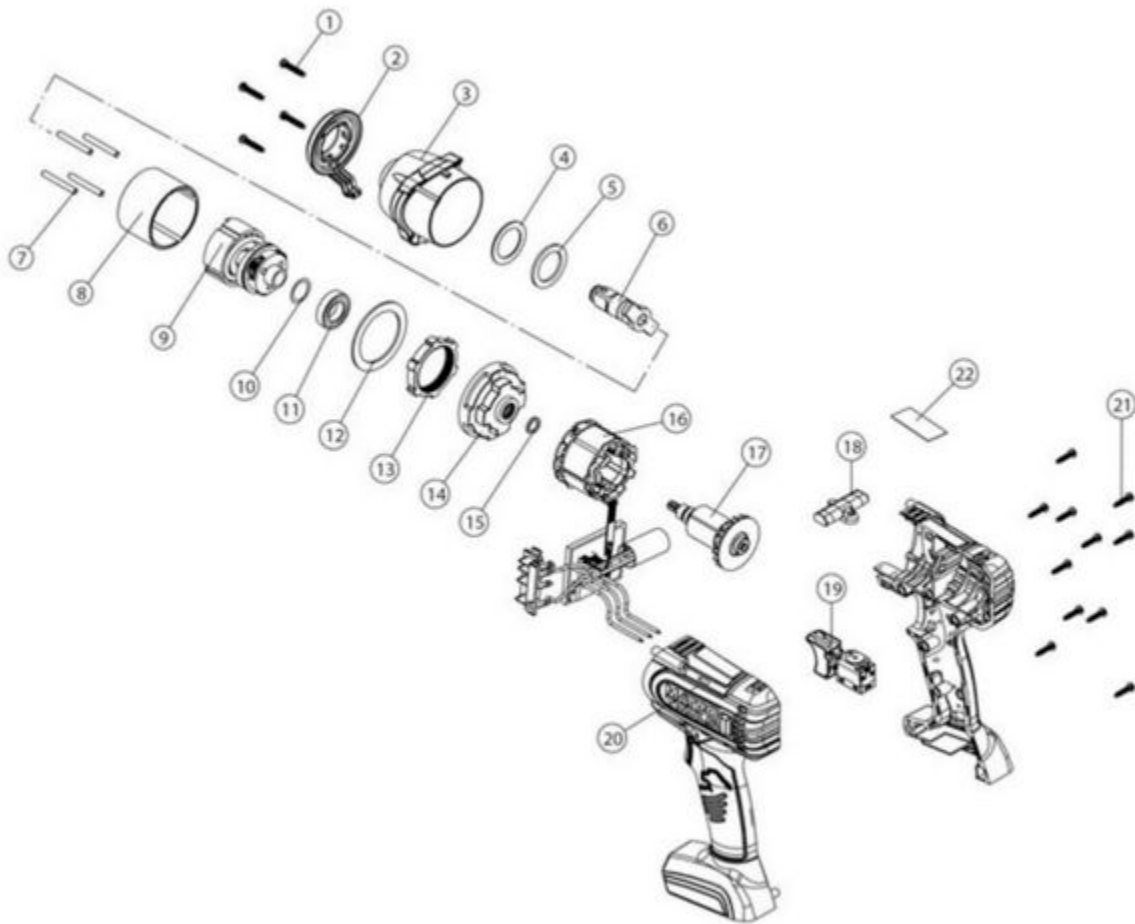


MCL2038HIK - 20V 3/8" HP WRENCH KIT



Item: MCL2038HIK

Description: 20V 3/8" HP WRENCH KIT

Notes: Kit Contents: 20V+ 3/8" Impact Wrench; 20V+ Universal Charger; (1) 20V+ 5Ah Li-Ion Battery

| Figure No | Part Number | Description | No. Reqd | Warranty Code |
|-----------|--------------------|------------------------------|----------|---------------|
| 1 | K7RS163827 | FRONT COVER SCREW F/ MCL1638 | 4 | X |
| 2 | *K7RS203801 | LED ASS'Y | 1 | |
| 3 | *K7RS203802 | FRONT COVER ASS'Y - BLACK | 1 | |
| 4 | *K7RS144IWHO03 | RUBBER WASHER [34 X 24 X 1T] | 1 | |
| 5 | *K7RS144IWHO04 | WASHER [34 X 24 X 2T] | 1 | |
| 6 | *K7RS203803 | 3/8" FRONT IMPACT ASS'Y | 1 | |
| 7 | *K7RS203804 | PIN [4 X 33.5L] | 4 | |
| 8 | *K7RS203805 | SUB HAMMER | 1 | |
| 9 | *K7RS203806 | REAR IMPACT ASS'Y | 1 | |
| 10 | *K7RS1838IW09 | WASHER [19.5 X 15.2-0.3T] | 1 | |
| 11 | K7RS144W10 | BEARING F/MPTL144IW | 1 | X |
| 12 | *K7RS203807 | WASHER | 1 | |
| 13 | K7144IWHO08 | GEAR RING F/MCL144IWHO | 1 | X |
| 14 | *K7RS203808 | RING GEAR FIXTURE | 1 | |
| 15 | *K7RS163839 | O-RING [12.3 X 1.6] | 1 | |
| 16 | *K7RS203809 | PCB ASS'Y + STATOR ASS'Y | 1 | |
| 17 | *K7RS203810 | ROTOR ASS'Y | 1 | |
| 18 | *K7RS203811 | FORWARD/REVERSE ROD | 1 | |
| 19 | *K7RS203812 | MAIN SWITCH | 1 | |
| 20 | *K7RS203813 | HOUSING-L&R [BURGUNDY] | 1 | |
| 20 | *K7RS203813O | HOUSING-L&R [ORANGE] | 1 | |
| 20 | *K7RS203813G | HOUSING-L&R [GREEN] | 1 | |
| 21 | K7RS144DD18 | HOUSING SCREW F/ MCL18IWVS | 11 | X |
| 22 | *K7RSMCL2038HIWPLK | PRODUCT WARNING LABEL | 1 | |