

**⚠ WARNING ⚠**

Study, understand and follow all instructions provided with this product. Read these instructions carefully before installing, operating, servicing or repairing this tool. Keep these instructions in a safe accessible place.

**INTENDED USE OF THE TOOL**

This heat gun was designed to be used for stripping paint, removing decals and pin striping, soften adhesives, drying, thawing, forming and welding plastics, shrinking wire wrap and various other insulating wraps, loosening fittings and fasteners, etc. Do not use this tool outside of the designed intent. Never modify the tool for any other purpose or use.

**⚠ WARNING ⚠**

**Caution: To help prevent personal injury**

- Normal use of this product is likely to expose the user to dust and/or microscopic particles containing chemicals known to the State of California to cause cancer, birth defects or other reproductive harm. Always wear appropriate safety equipment and clothing when using this product. Study, understand and follow all instructions provided with this product. Failure to read and follow all warnings and operating instructions may result in damages and serious injury or death.
- Always wear ANSI approved goggles when using this product. (Users and Bystanders).
- Never use this tool for any application other than for which it was designed.
- Only use accessories designed for this tool.
- Never alter or modify this tool in any way.
- Improper operation and/or maintenance of the tool, modification of the tool, or use of the tool with accessories not designed for it could result in serious injury or death.
- Always select the correct accessories of the correct size and design for the job that you are attempting to perform.
- Always work in a clean, safe, well-lit, organized and adequately equipped area.
- Do not begin repairs without assurance that vehicle is in secure position, and will not move during repair.



Made in China  
to Matco specifications

**1 YEAR LIMITED WARRANTY**

The manufacturer warrants this product to the original user against defective material or workmanship for a period of 1 year from the date of purchase. The manufacturer reserves the right to determine whether the part or parts failed because of defective material, workmanship or other causes.

Failures caused by accident, alteration or misuse are not covered by this warranty. The manufacturer, at its discretion, will repair or replace product covered under this warranty free of charge.

Repairs or replacements of products covered under this warranty are warranted for the remainder of the original warranty period.

The manufacturer or its authorized service representatives must perform all warranty repairs. Any repair to the product by unauthorized service representatives voids this warranty. The rights under this warranty are limited to the original user and may not be transferred to subsequent owners.

The warranty is in lieu of all other warranties, expressed or implied, including warranties of merchantability and fitness for a particular purpose.

Some states do not allow the exclusion or limitations of incidental or consequential damages, so the above limitations may not apply to you.

**PRODUCT INFORMATION:**

- **Industrial.** Heavy duty construction and long lasting heat element for professional use.
- **Adjustable.** Rotating shutter increases temperature from 750° - 1,100°F.
- **Versatile.** Features a cool down setting and adjustable position base for fixed stationary use and safety.

**SPECIFICATIONS:**

Voltage:	120 Volts
Amperage:	13 amp
Temperature:	750° - 1,100°F
Wattage:	1600 W
Weight:	4.85 lbs.
Average Air Volume:	Shutter Open 23 CFM

**DO NOT DISCARD – GIVE TO USER**

**WARNING****GENERAL SAFETY INSTRUCTIONS:**

Heat guns are a source of very high temperature flameless heat. As with other products which generate extremely high temperatures, regardless of your specific application, sufficient care and caution should be observed when using this product to reduce the risk of fire, electrical shock or personal injury. Therefore, we recommend that you pay very close attention to the following safety instructions which are provided for your protection.

1. Always keep work area clean and well lit.  
Do not expose power tools to rain or wet conditions.  
Do not operate power tools in explosive atmosphere such as in the presence of flammable liquids gases or dust.
2. Avoid body contact with grounded surfaces such as pipes, radiators, etc. to avoid electrical shock. Always keep cord away from heat, oil, sharp edges and moving parts. Check for damaged or entangled cords to prevent the risk of electrical shock. Never modify the plug or cord in any way.
3. Keep children and bystanders away while operating this tool.
4. Store idle power tools out of the reach of children and in a secure locked place.
5. Stay alert! Use common sense when operating a power tool. Do not use a power tool while you are tired or under the influence of drugs, alcohol or medication.  
Before use, check for damaged parts or any other condition that may affect the tools operation.
6. Check for alignment and binding of moving parts, cracks or breaks in parts, secure fastening of parts and any other condition that may affect the operation of the heat gun.
7. To ensure the designed operational integrity of power tools, do not remove installed cover or screws.
8. Dress properly. Do not wear loose clothing or jewelry.  
Keep your hair, clothing, and gloves away from moving parts.
9. For personal safety, use personal protective equipment, such as non-skid safety shoes, hard hat and/or hearing protection. Always wear eye protection. Only use safety equipment that has been approved by an appropriate standards agency.
10. Do not overreach. Proper footing and balance enables better control of the tool in unexpected situations.
11. Please keep the tool dry to avoid damage.
12. Do not block the heat gun's air inlet and outlet.
13. Do not touch the metal end nozzle of the heat gun with your hand or any flammable material.
14. Keep the heat gun moving when in use to prevent potential ignition of material due to excessive heat.
15. Do not drop or puncture the heat gun's plastic casing.
16. Do not point heat gun toward people or animals.
17. Do not use as hair dryer.

**OPERATING INSTRUCTIONS:****Operating the Heat Gun**

1. Plug heat gun into properly rated outlet.
2. With the rocker switch in the "OFF" position, familiarize yourself with handling the heat gun. Find the switch and the ventilation shutter.
3. Move rocker switch to the "HOT" position. Heat gun will reach full operating temperature in approximately two minutes.
4. Move air intake shutter to desired position. To obtain maximum heat output, turn the ventilation shutter so it covers the ventilation openings. Open will provide slightly cooler air.
5. For maximum heating, place the nozzle one (1) inch from the area to be heated.
6. NEVER position the nozzle closer than one (1) inch to the work. This will cause premature failure of the heating element.
7. To reduce heat output, turn the ventilation shutter to maximum opening and move the nozzle away from the work.
8. The adjustable stand allows nozzle to be rotated 90° from the vertical to the horizontal position.
9. WARNING: Operate the heat gun in the "COLD" position for two-three (2-3) minutes before switching to "OFF" position. This allows the heat gun to cool down and the nozzle to become cool to the touch.
10. Move switch to "OFF" position.

**NOTE: For the best operating results, perform a trial test on all materials.**

**Paint Stripping**

1. To strip paint, turn heat gun on and hold it about one (1) inch from the surface being stripped. Proper distance and speed of stripping should be determined by experience. It is best to hold the gun further from the surface and to move forward slowly. Slower speed is made up for by the wider softened areas. Heat will also penetrate deeper.
2. Regulate the outlet temperature by using the shutter at the side of the heat gun. With open shutter, temperature is about 500°F/260°C at a distance of one (1) inch from the nozzle. With closed shutter, temperature is about 750°F/399°C. Try difference settings to find the best result with the paint you are stripping.
3. As paint starts to blister and bubble, move gun slowly and steadily across the surface. Follow closely with a scraping knife (a two (2) inch wall scraper works best) to remove the loosened paint. To increase the speed of stripping the paint, preheat the scraper as you move along the work surface with the heat gun.
4. When stripping paint from grooves in molding, you may need to devise your own scraper tools. Many people use old screwdrivers with ground-down blades and linoleum knives to do the job.
5. When the job is completed, move the rocker switch to the cool position for 2-3 minutes before switching to the off position to allow the heat gun to cool down.

**⚠️ ADVERTENCIA ⚠️**

Estudie, entienda y siga todas las instrucciones que se proveen con este producto. Lea las instrucciones detenidamente antes de instalar, operar, dar servicio o reparar esta herramienta. Guarde estas instrucciones en un lugar seguro y accesible.

**APLICACIÓN DE LA HERRAMIENTA**

**This heat gun was designed to be used for stripping paint, removing decals and pin striping, soften adhesives, drying, thawing, forming and welding plastics, shrinking wire wrap and various other insulating wraps, loosening fittings and fasteners, etc. Do not use this tool outside of the designed intent. Never modify the tool for any other purpose or use.**

**⚠️ ADVERTENCIA ⚠️**

- El uso normal de esta herramienta puede exponer al usuario al polvo o a partículas microscópicas que contienen sustancias químicas que se conocen en el estado de California por causar cáncer, defectos del nacimiento u otros daños reproductivos. Siempre use equipo y ropa de seguridad adecuados para trabajar con esta herramienta. Lea, comprenda y siga todas las instrucciones incluidas con esta herramienta. Omitir la lectura y el no seguir todas las advertencias e instrucciones de operación puede traer como consecuencia daños y lesiones graves o hasta la muerte.
- Siempre use guantes del tipo aprobado por la ANSI para trabajar con esta herramienta. (tanto usuarios como espectadores).
- Nunca utilice esta herramienta para cualquier otra cosa que no sean las aplicaciones para lo que fue diseñada.
- Sólo utilice los accesorios diseñados para esta herramienta.
- No modifique o altere esta herramienta de ninguna manera.
- El funcionamiento y/o mantenimiento inadecuado de la herramienta, la modificación, o la utilización de la herramienta con accesorios inadecuados podrían causar lesiones graves o la muerte.
- Siempre usar los correctos accesorios para el trabajo que Ud. está realizando.
- Trabaje siempre en un área limpia, segura, bien iluminada, organizada y equipada adecuadamente.



HECHO en China  
Para Matco especificaciones

**GARANTÍA LIMITADA DE UN AÑO**

El fabricante garantiza este producto al usuario original contra defectos de materiales o de mano de obra durante un periodo de un año a partir de la fecha de compra. El fabricante se reserva el derecho a determinar si una pieza o piezas fallaron debido a material defectuoso, mano de obra, o por otras causas. Esta garantía no cubre fallas causadas por accidentes, alteraciones o uso indebido. El fabricante, a su entera discreción, reparará o reemplazará los productos cubiertos por esta garantía sin costo alguno. Las reparaciones o reemplazos de productos cubiertos por esta garantía quedan garantizados durante el resto del periodo original de garantía. El fabricante o sus representantes autorizados de servicio deben llevar a cabo todas las reparaciones de garantía. Toda reparación hecha al producto por representantes de servicio no autorizados invalida la presente garantía. Los derechos que ampara esta garantía están limitados al usuario original y no se pueden transferir a dueños posteriores. Esta garantía reemplaza a todas las demás garantías expresas o implícitas, incluyendo garantías de comercialización e idoneidad para un propósito particular. Algunos estados no permiten la exclusión o limitaciones de daños incidentales o imprevistos, de manera que las limitaciones mencionadas anteriormente pueden no ser aplicables en su caso.

**INFORMACIÓN DEL PRODUCTO:**

- **Industrial.** Heavy duty construction and long lasting heat element for professional use.
- **Adjustable.** Rotating shutter increases temperature from 750° - 1,100°F.
- **Versatile.** Features a cool down setting and adjustable position base for fixed stationary use and safety.

**ESPECIFICACIONES:**

Voltage: 120 Volts  
 Amperage: 13 amp  
 Temperature: 750° - 1,100°F  
 Wattage: 1600 W  
 Weight: 4.85 lbs.  
 Average Air Volume: Shutter Open 23 CFM

**DO NOT DISCARD – GIVE TO USER**

## ⚠️ ADVERTENCIA ⚠️

### GENERAL SAFETY INSTRUCTIONS:

Heat guns are a source of very high temperature flameless heat. As with other products which generate extremely high temperatures, regardless of your specific application, sufficient care and caution should be observed when using this product to reduce the risk of fire, electrical shock or personal injury. Therefore, we recommend that you pay very close attention to the following safety instructions which are provided for your protection.

1. Always keep work area clean and well lit.  
Do not expose power tools to rain or wet conditions.  
Do not operate power tools in explosive atmosphere such as in the presence of flammable liquids gases or dust.
2. Avoid body contact with grounded surfaces such as pipes, radiators, etc. to avoid electrical shock. Always keep cord away from heat, oil, sharp edges and moving parts. Check for damaged or entangled cords to prevent the risk of electrical shock. Never modify the plug or cord in any way.
3. Keep children and bystanders away while operating this tool.
4. Store idle power tools out of the reach of children and in a secure locked place.
5. Stay alert! Use common sense when operating a power tool. Do not use a power tool while you are tired or under the influence of drugs, alcohol or medication.  
Before use, check for damaged parts or any other condition that may affect the tools operation.
6. Check for alignment and binding of moving parts, cracks or breaks in parts, secure fastening of parts and any other condition that may affect the operation of the heat gun.
7. To ensure the designed operational integrity of power tools, do not remove installed cover or screws.
8. Dress properly. Do not wear loose clothing or jewelry. Keep your hair, clothing, and gloves away from moving parts.
9. For personal safety, use personal protective equipment, such as non-skid safety shoes, hard hat and/or hearing protection. Always wear eye protection. Only use safety equipment that has been approved by an appropriate standards agency.
10. Do not overreach. Proper footing and balance enables better control of the tool in unexpected situations.
11. Please keep the tool dry to avoid damage.
12. Do not block the heat gun's air inlet and outlet.
13. Do not touch the metal end nozzle of the heat gun with your hand or any flammable material.
14. Keep the heat gun moving when in use to prevent potential ignition of material due to excessive heat.
15. Do not drop or puncture the heat gun's plastic casing.
16. Do not point heat gun toward people or animals.
17. Do not use as hair dryer.

## OPERATING INSTRUCTIONS:

### Operating the Heat Gun

1. Plug heat gun into properly rated outlet.
2. With the rocker switch in the "OFF" position, familiarize yourself with handling the heat gun. Find the switch and the ventilation shutter.
3. Move rocker switch to the "HOT" position. Heat gun will reach full operating temperature in approximately two minutes.
4. Move air intake shutter to desired position. To obtain maximum heat output, turn the ventilation shutter so it covers the ventilation openings. Open will provide slightly cooler air.
5. For maximum heating, place the nozzle one (1) inch from the area to be heated.
6. NEVER position the nozzle closer than one (1) inch to the work. This will cause premature failure of the heating element.
7. To reduce heat output, turn the ventilation shutter to maximum opening and move the nozzle away from the work.
8. The adjustable stand allows nozzle to be rotated 90° from the vertical to the horizontal position.
9. WARNING: Operate the heat gun in the "COLD" position for two-three (2-3) minutes before switching to "OFF" position. This allows the heat gun to cool down and the nozzle to become cool to the touch.
10. Move switch to "OFF" position.

**NOTE: For the best operating results, perform a trial test on all materials.**

### Paint Stripping

1. To strip paint, turn heat gun on and hold it about one (1) inch from the surface being stripped. Proper distance and speed of stripping should be determined by experience. It is best to hold the gun further from the surface and to move forward slowly. Slower speed is made up for by the wider softened areas. Heat will also penetrate deeper.
2. Regulate the outlet temperature by using the shutter at the side of the heat gun. With open shutter, temperature is about 500°F/260°C at a distance of one (1) inch from the nozzle. With closed shutter, temperature is about 750°F/399°C. Try difference settings to find the best result with the paint you are stripping.
3. As paint starts to blister and bubble, move gun slowly and steadily across the surface. Follow closely with a scraping knife (a two (2) inch wall scraper works best) to remove the loosened paint. To increase the speed of stripping the paint, preheat the scraper as you move along the work surface with the heat gun.
4. When stripping paint from grooves in molding, you may need to devise your own scraper tools. Many people use old screwdrivers with ground-down blades and linoleum knives to do the job.
5. When the job is completed, move the rocker switch to the cool position for 2-3 minutes before switching to the off position to allow the heat gun to cool down.

**⚠ AVERTISSEMENT ⚠**

Etudier, comprendre et suivre toutes les instructions fournies avec ce produit. Lire ces instructions attentivement avant d'installer, d'utiliser, d'entretenir et de réparer cet outil. Conserver ces instructions dans un endroit sécuritaire et accessible.

**Utilisation prévue**

**This heat gun was designed to be used for stripping paint, removing decals and pin striping, soften adhesives, drying, thawing, forming and welding plastics, shrinking wire wrap and various other insulating wraps, loosening fittings and fasteners, etc. Do not use this tool outside of the designed intent. Never modify the tool for any other purpose or use.**

**⚠ Mesure de sécurité ⚠**

**Mise en garde : Pour aider à prévenir les blessures**

- **L'utilisation normale de ce produit pourrait exposer l'utilisateur à de la poussière et/ou des particules microscopiques contenant des produits chimiques que l'État de la Californie a reconnu comme étant une cause de cancer, de déficience congénitale et d'autres effets nocifs sur le système reproductif. Toujours porter un équipement et des vêtements sécuritaires appropriés en utilisant ce produit. Étudier, comprendre et suivre toutes les instructions fournies avec ce produit.**
- **Toujours porter des lunettes à coques approuvées par l'ANSI lorsque vous utilisez ce produit.**
- **Toujours utiliser les accessoires adéquats pour le travail que vous effectuez.**
- **Toujours travailler dans un environnement propre, sécuritaire, bien éclairé, organisé et suffisamment équipé.**



Fabriqué à Chine  
les spécifications de Matco

**1 ANNÉE DE GARANTIE LIMITÉE**

Le fabricant garantit à l'acheteur initial que ce produit est exempt de tout vice de matériau et de fabrication pendant une période de une année suivant la date de l'achat. Le fabricant se réserve le droit de déterminer si la pièce ou les pièces défectueuses sont imputables à un matériau défectueux, à un défaut de fabrication ou à d'autres causes. Les défaillances causées par un accident, une modification ou une utilisation incorrecte ne sont pas couvertes par la présente garantie. Le fabricant, à sa seule discrétion, réparera ou remplacera sans frais les produits couverts par cette garantie. Les réparations ou les remplacements de produits couverts par cette garantie sont garantis pour le reste de la période de garantie initiale. Le fabricant ou ses représentants de service autorisés doivent exécuter les réparations sous garantie. Toute réparation du produit effectuée par un représentant de service non-autorisé annulera cette garantie. Les droits couverts par cette garantie sont limités à l'acheteur initial et ne peuvent être transférés aux propriétaires subséquents. Cette garantie remplace toutes autres garanties, expresses ou implicites, incluant les garanties de valeur marchande ou d'adaptation à un usage particulier. Certains États ou provinces ne permettent pas d'exclure ou de limiter les dommages consécutifs ou indirects, donc les limitations ci-dessus pourraient ne pas s'appliquer.

**INFORMATIONS PRODUIT:**

- **Industrial.** Heavy duty construction and long lasting heat element for professional use.
- **Adjustable.** Rotating shutter increases temperature from 750° - 1,100°F
- **Versatile.** Features a cool down setting and adjustable position base for fixed stationary use and safety.

**SPÉCIFICATIONS:**

Voltage: 120 Volts  
 Amperage: 13 amp  
 Temperature: 750° - 1,100°F  
 Wattage: 1600 W  
 Weight: 4.85 lbs.  
 Average Air Volume: Shutter Open 23 CFM

**DO NOT DISCARD – GIVE TO USER**

## ⚠️ AVERTISSEMENT ⚠️

### GENERAL SAFETY INSTRUCTIONS:

Heat guns are a source of very high temperature flameless heat. As with other products which generate extremely high temperatures, regardless of your specific application, sufficient care and caution should be observed when using this product to reduce the risk of fire, electrical shock or personal injury. Therefore, we recommend that you pay very close attention to the following safety instructions which are provided for your protection.

1. Always keep work area clean and well lit.  
Do not expose power tools to rain or wet conditions.  
Do not operate power tools in explosive atmosphere such as in the presence of flammable liquids gases or dust.
2. Avoid body contact with grounded surfaces such as pipes, radiators, etc. to avoid electrical shock. Always keep cord away from heat, oil, sharp edges and moving parts. Check for damaged or entangled cords to prevent the risk of electrical shock. Never modify the plug or cord in any way.
3. Keep children and bystanders away while operating this tool.
4. Store idle power tools out of the reach of children and in a secure locked place.
5. Stay alert! Use common sense when operating a power tool. Do not use a power tool while you are tired or under the influence of drugs, alcohol or medication.  
Before use, check for damaged parts or any other condition that may affect the tools operation.
6. Check for alignment and binding of moving parts, cracks or breaks in parts, secure fastening of parts and any other condition that may affect the operation of the heat gun.
7. To ensure the designed operational integrity of power tools, do not remove installed cover or screws.
8. Dress properly. Do not wear loose clothing or jewelry. Keep your hair, clothing, and gloves away from moving parts.
9. For personal safety, use personal protective equipment, such as non-skid safety shoes, hard hat and/or hearing protection. Always wear eye protection. Only use safety equipment that has been approved by an appropriate standards agency.
10. Do not overreach. Proper footing and balance enables better control of the tool in unexpected situations.
11. Please keep the tool dry to avoid damage.
12. Do not block the heat gun's air inlet and outlet.
13. Do not touch the metal end nozzle of the heat gun with your hand or any flammable material.
14. Keep the heat gun moving when in use to prevent potential ignition of material due to excessive heat.
15. Do not drop or puncture the heat gun's plastic casing.
16. Do not point heat gun toward people or animals.
17. Do not use as hair dryer.

## OPERATING INSTRUCTIONS:

### Operating the Heat Gun

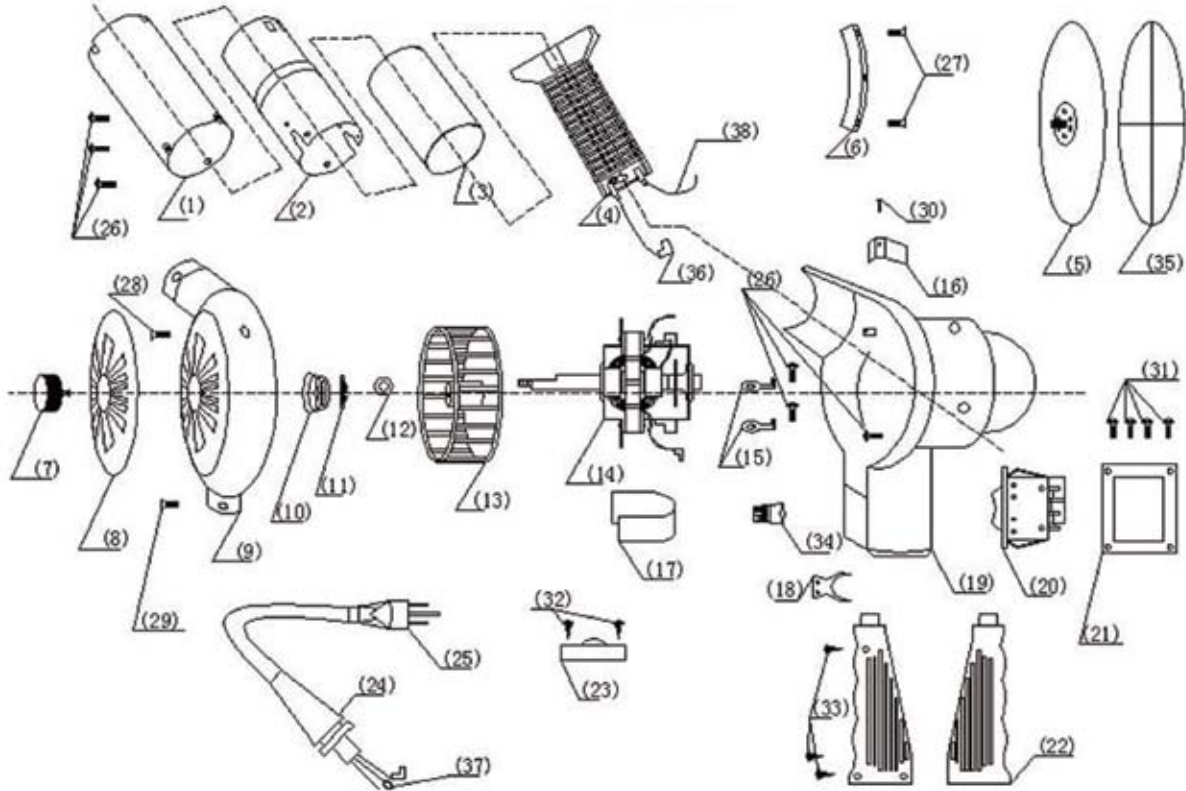
1. Plug heat gun into properly rated outlet.
2. With the rocker switch in the "OFF" position, familiarize yourself with handling the heat gun. Find the switch and the ventilation shutter.
3. Move rocker switch to the "HOT" position. Heat gun will reach full operating temperature in approximately two minutes.
4. Move air intake shutter to desired position. To obtain maximum heat output, turn the ventilation shutter so it covers the ventilation openings. Open will provide slightly cooler air.
5. For maximum heating, place the nozzle one (1) inch from the area to be heated.
6. NEVER position the nozzle closer than one (1) inch to the work. This will cause premature failure of the heating element.
7. To reduce heat output, turn the ventilation shutter to maximum opening and move the nozzle away from the work.
8. The adjustable stand allows nozzle to be rotated 90° from the vertical to the horizontal position.
9. WARNING: Operate the heat gun in the "COLD" position for two-three (2-3) minutes before switching to "OFF" position. This allows the heat gun to cool down and the nozzle to become cool to the touch.
10. Move switch to "OFF" position.

**NOTE: For the best operating results, perform a trial test on all materials.**

### Paint Stripping

1. To strip paint, turn heat gun on and hold it about one (1) inch from the surface being stripped. Proper distance and speed of stripping should be determined by experience. It is best to hold the gun further from the surface and to move forward slowly. Slower speed is made up for by the wider softened areas. Heat will also penetrate deeper.
2. Regulate the outlet temperature by using the shutter at the side of the heat gun. With open shutter, temperature is about 500°F/260°C at a distance of one (1) inch from the nozzle. With closed shutter, temperature is about 750°F/399°C. Try difference settings to find the best result with the paint you are stripping.
3. As paint starts to blister and bubble, move gun slowly and steadily across the surface. Follow closely with a scraping knife (a two (2) inch wall scraper works best) to remove the loosened paint. To increase the speed of stripping the paint, preheat the scraper as you move along the work surface with the heat gun.
4. When stripping paint from grooves in molding, you may need to devise your own scraper tools. Many people use old screwdrivers with ground-down blades and linoleum knives to do the job.
5. When the job is completed, move the rocker switch to the cool position for 2-3 minutes before switching to the off position to allow the heat gun to cool down.

**PARTS BREAKDOWN**



**Parts List**

Index	Part No.	Description	Index	Part No.	Description
1	9426-01	Wind Tube Sheath	20	9426-20	Switch
2	9426-02	Wind Tube	21	9426-21	Switch Panel
3	9426-03	Mica Insulation Tube	22	9426-22	Handle
4	9426-04	Heating Element	23	9426-23	Strain Relief Plate
5	MHG751C-05	Stand	24	9426-24	Strain Relief
6	9426-06	Aluminum Block	25	9426-25	Power Cord
7	9426-07	Knob	26	9426-26	Screw (4*8r)
8	9426-08	Ventilation Shutter	27	9426-27	Screw (4*8f)
9	MHG751C-09	Left Housing	28	9426-28	Screw (3*12r)
10	9426-10	Spring	29	9426-29	Screw (3*6f)
11	9426-11	Circlip For Ventilation Shutter	30	9426-30	Screw (3*8f)
12	9426-12	Nut	31	9426-31	Screw (3*6r)
13	9426-13	Fan	32	9426-32	Screw (4*6s)
14	9426-14	Motor Assembly	33	9426-33	Screw (3*13s)
15	9426-15	Wire Clip A	34	9426-34	Terminal Block
16	9426-16	Wire Clip B	35	9426-35	Rubber Pad
17	9426-17	Insulator	36	9426-36	Wire Connector
18	9426-18	Circlip For Handle	37	9426-37	Ground Terminal
19	MHG751C-19	Right Housing	38	9426-38	Internal Wiring