



WARNING



Study, understand and follow all instructions provided with this product. Read these instructions carefully before installing, operating, servicing or repairing this tool. Keep these instructions in a safe, accessible place.

INTENDED USE OF THE TOOL

The MNTS8 is designed to set the rivet nuts of the following thread pitches: 1/4-20, 10-24, 8-32, 10-32, M4x0.7, M5x0.8 and M6x1.0. Do not use this tool outside of the designed intent. Never modify the tool for any other purpose or use.



WARNING



Caution: To help prevent personal injury

- Use of this product can expose you to chemicals including ethylene glycol, gasoline vapors and engine exhaust, which are known to the State of California to cause cancer, birth defects, or reproductive harm. For more information, visit www.P65Warnings.ca.gov. Always wear ANSI approved safety equipment, safety glasses and clothing when using this product. Study, understand, and follow all instructions provided with this product. Failure to read and follow all warnings and operating instructions may result in damages and serious injury or death.
- Always wear ANSI approved goggles when using this product. (Users and bystanders).
- Never use this tool for any application other than for which it was designed.
- Only use accessories designed for this tool.
- Never alter or modify this tool in any way.
- Improper operation and/or maintenance of the tool, modification of the tool, or use of the tool with accessories not designed for it could result in serious injury or death.
- Always select the correct accessories of the correct size and design for the job that you are attempting to perform.
- Always work in a clean, safe, well-lit, organized and adequately equipped area.
- Do not begin repairs without assurance that vehicle is in a secure position, and will not move during repair.

BEFORE USE

When unpacking, check the parts diagram and part number listing on page 7 to make sure all parts are included. If any parts are missing or damaged, please call your distributor.



Made in China
to Matco specifications

1 YEAR LIMITED WARRANTY

The manufacturer warrants this product to the original user against defective material or workmanship for a period of 1 year from the date of purchase.

The manufacturer reserves the right to determine whether the part or parts failed because of defective material, workmanship or other causes. Failures caused by accident, alteration, or misuse are not covered by this warranty.

The manufacturer, at its discretion, will repair or replace product covered under this warranty, free of charge. Repairs or replacements of products covered under this warranty are warranted for the remainder of the original warranty period.

The manufacturer or its authorized service representatives must perform all warranty repairs. Any repair to the product by unauthorized service representatives voids this warranty. The rights under this warranty are limited to the original user and may not be transferred to subsequent owners.

The warranty is in lieu of all other warranties, expressed or implied, including warranties of merchantability and fitness for a particular purpose. Some states do not allow the exclusion or limitations of incidental or consequential damages, so the above limitations may not apply to you.

PRODUCT INFORMATION:

Compact design. Less than 8" long and 4.5" wide for one-handed use in confined areas.

Power. Sets rivet nut sizes up to 1/4" easier than any other pistol style tool.

SAE and metric. Includes a rivet nut assortment and mandrel sizes in 8-32, 10-24, 1/4-20, M4, M5 and M6.

TECHNICAL DESCRIPTION:

Weight: 1.54 lbs. (700g)

Length: 7.48" (190mm)

Max working stroke: 7mm

Max effective working stroke: 5mm

DO NOT DISCARD – GIVE TO USER



WARNING



Always wear ANSI approved safety goggles when using this product (users and bystanders). Failure to read and follow all warnings and operating instructions may result in damages and serious injuries or death.

DRILL SIZE GUIDE:

Metric

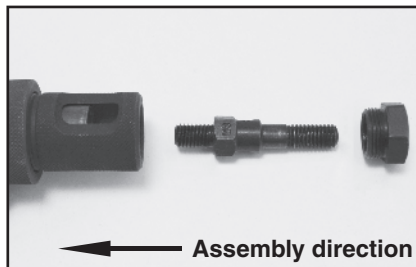
Nut Size	Drill Size
M4	6mm (7/32")
M5	7mm (9/32")
M6	9mm (3/8")

SAE

Nut Size	Drill Size
8-32	6mm (7/32")
10-24	7mm (9/32")
1/4-20	9mm (3/8")

OPERATING INSTRUCTIONS:

1. Choose the rivet nut size to be installed.
2. Install the correct size mandrel/nosepiece for the rivet nut to be installed. See photos and instructions for changing the mandrel/nosepiece and adjustment.
3. Drill a hole in the work product the same size or slightly larger than the outside diameter of the rivet nut to be installed.
4. To install the rivet nut, open the handles outward as far as possible and thread the rivet nut clockwise onto the mandrel until reaching the nosepiece.
5. Insert the rivet nut fastened to the riveter into the pre-drilled hole until flush with the work product, and pull handles inward to secure the rivet nut into the hole. If the rivet nut is loose in the hole, open the handles outward, turn #10 knob clockwise, and pull handles inward until the rivet nut is secure in the hole. Repeat as necessary until the rivet nut is secure in the hole. See adjustment instructions if necessary.
6. Turn the #10 knob counterclockwise until the mandrel is removed from the rivet nut. The rivet nut installation is complete if the rivet nut is secure from movement in the hole.



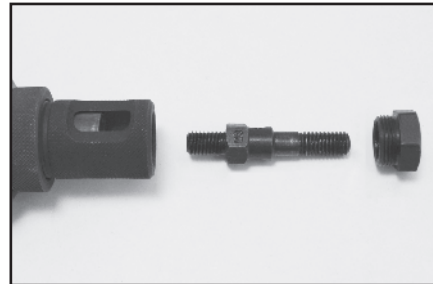
CHANGING MANDREL/ NOSEPIECE INSTRUCTIONS:

1. Remove and install the mandrel and nosepieces. Always keep the matched mandrel/nosepiece sets together.
2. Remove nosepiece from #16 sleeve by unthreading the nose piece counterclockwise. This can be done either by hand or with the provided wrench if too tight to do so.

3. Using your thumbnail or tool, press down to depress the #15 inner hexagonal sleeve that sits within the #16 outer sleeve. This should expose the lower hex portion of the mandrel.



4. Unthread the mandrel by hand to remove it from the sleeve. Once the mandrel has been threaded out far enough to clear the #15 hex sleeve you may release tension on this sleeve collar.
5. Choose the correct mandrel/nosepiece to be installed.



6. Thread the new mandrel into the tool by hand until it approaches the #15 hex sleeve and fully depress this sleeve to allow the mandrel to be threaded further until it stops. The mandrel does not need to be torqued. Release the hex sleeve and allow it to fully reengage the mandrel. If the mandrel and hex sleeve do not initially align, rotate the #10 knob while holding onto the mandrel until it clicks up and reengages.
7. Thread the matching nose piece into the #16 by hand. Torqueing the nose piece is optional.

⚠️ ADVERTENCIA ⚠️

Estudie, entienda y siga todas las instrucciones que se proveen con este producto. Lea las instrucciones detenidamente antes de instalar, operar, dar servicio o reparar esta herramienta. Guarde estas instrucciones en un lugar seguro y accesible.

EL USO DE LA HERRAMIENTA

The MNTS8 is designed to set the rivet nuts of the following thread pitches: 1/4-20, 10-24, 8-32, 10-32, M4x0.7, M5x0.8, and M6x1.0. No utilice esta herramienta fuera de la intención de su diseño. Nunca modifique la herramienta para ningún otro propósito o uso.

⚠️ ADVERTENCIA ⚠️

Precaución: Para ayudar a evitar lesiones a las personas

- El uso de este producto puede exponerlo a productos químicos que incluyen etilenglicol, vapores de gasolina y gases de escape del motor, que en el estado de California son causantes de cáncer, defectos de nacimiento o daños reproductivos. Para obtener más información, visite www.P65Warnings.ca.gov. Siempre use equipo de seguridad aprobado por ANSI, gafas de seguridad y ropa cuando use este producto. Estudie, comprenda y siga todas las instrucciones proporcionadas con este producto. Si no lee y sigue todas las advertencias e instrucciones de funcionamiento puede ocasionar daños y lesiones graves o la muerte.
- Siempre use guantes del tipo aprobado por la ANSI para trabajar con esta herramienta (tanto usuarios como espectadores).
- Nunca utilice esta herramienta para cualquier otra cosa que no sean las aplicaciones para lo que fue diseñada.
- Sólo utilice los accesorios diseñados para esta herramienta.
- No modifique o altere esta herramienta de ninguna manera.
- El funcionamiento y/o mantenimiento inadecuado de la herramienta, la modificación, o la utilización de la herramienta con accesorios inadecuados podrían causar lesiones graves o la muerte.
- Siempre usar los correctos accesorios para el trabajo que Ud. está realizando.
- Trabaje siempre en un área limpia, segura, bien iluminada, organizada y equipada adecuadamente.
- NUNCA empiece reparaciones sin estar seguro de que el vehículo esté en posición segura y que no se mueva durante la reparación.

DESEMPACADO

Cuando desempaqué el producto, revise el diagrama y la lista de piezas en página 7 para verificar que se hayan enviado todas las piezas. De perder piezas o tener piezas dañadas, favor llamar a su distribuidor inmediatamente.



HECHO en China
Para Matco especificaciones

GARANTÍA LIMITADA DE UN AÑO

El fabricante garantiza este producto al usuario original contra defectos de materiales o de mano de obra durante un periodo de un año a partir de la fecha de compra.

El fabricante se reserva el derecho a determinar si una pieza o piezas fallaron debido a material defectuoso, mano de obra, o por otras causas. Esta garantía no cubre fallas causadas por accidentes, alteraciones o uso indebido.

El fabricante, a su entera discreción, reparará o reemplazará los productos cubiertos por esta garantía sin costo alguno. Las reparaciones o reemplazos de productos cubiertos por esta garantía quedan garantizados durante el resto del periodo original de garantía.

El fabricante o sus representantes autorizados de servicio deben llevar a cabo todas las reparaciones de garantía. Toda reparación hecha al producto por representantes de servicio no autorizados invalida la presente garantía.

Los derechos que ampara esta garantía están limitados al usuario original y no se pueden transferir a dueños posteriores. Esta garantía reemplaza a todas las demás garantías expresas o implícitas, incluyendo garantías de comercialización e idoneidad para un propósito particular. Algunos estados no permiten la exclusión o limitaciones de daños incidentales o imprevistos, de manera que las limitaciones mencionadas anteriormente pueden no ser aplicables en su caso.

INFORMACIÓN DEL PRODUCTO:

Compact design. Less than 8" long and 4.5" wide for one-handed use in confined areas.

Power. Sets rivet nut sizes up to 1/4" easier than any other pistol style tool.

SAE and metric. Includes a rivet nut assortment and mandrel sizes in 8-32, 10-24, 1/4-20, M4, M5 and M6.

TECHNICAL DESCRIPTION:

Weight: 1.54 lbs. (700g)

Length: 7.48" (190mm)

Max working stroke: 7mm

Max effective working stroke: 5mm

NO LO DESCARTE O DESECHE, ENTREGUESELO AL USUARIO



WARNING



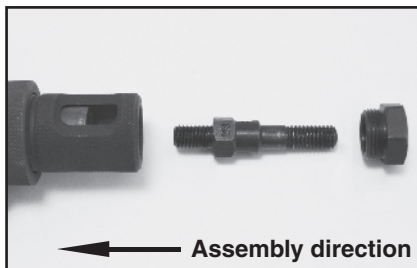
Always wear ANSI approved safety goggles when using this product (users and bystanders). Failure to read and follow all warnings and operating instructions may result in damages and serious injuries or death.

DRILL SIZE GUIDE:

Metric		SAE	
Nut Size	Drill Size	Nut Size	Drill Size
M4	6mm (7/32")	8-32	6mm (7/32")
M5	7mm (9/32")	10-24	7mm (9/32")
M6	9mm (3/8")	1/4-20	9mm (3/8")

OPERATING INSTRUCTIONS:

1. Choose the rivet nut size to be installed.
2. Install the correct size mandrel/nosepiece for the rivet nut to be installed. See photos and instructions for changing the mandrel/nosepiece and adjustment.
3. Drill a hole in the work product the same size or slightly larger than the outside diameter of the rivet nut to be installed.
4. To install the rivet nut, open the handles outward as far as possible and thread the rivet nut clockwise onto the mandrel until reaching the nosepiece.
5. Insert the rivet nut fastened to the riveter into the pre-drilled hole until flush with the work product, and pull handles inward to secure the rivet nut into the hole. If the rivet nut is loose in the hole, open the handles outward, turn #10 knob clockwise, and pull handles inward until the rivet nut is secure in the hole. Repeat as necessary until the rivet nut is secure in the hole. See adjustment instructions if necessary.
6. Turn the #10 knob counterclockwise until the mandrel is removed from the rivet nut. The rivet nut installation is complete if the rivet nut is secure from movement in the hole.



CHANGING MANDREL/ NOSEPIECE INSTRUCTIONS:

1. Remove and install the mandrel and nosepieces. Always keep the matched mandrel/nosepiece sets together.
2. Remove nosepiece from #16 sleeve by unthreading the nose piece counterclockwise. This can be done either by hand or with the provided wrench if too tight to do so.

3. Using your thumbnail or tool, press down to depress the #15 inner hexagonal sleeve that sits within the #16 outer sleeve. This should expose the lower hex portion of the mandrel.



4. Unthread the mandrel by hand to remove it from the sleeve. Once the mandrel has been threaded out far enough to clear the #15 hex sleeve you may release tension on this sleeve collar.
5. Choose the correct mandrel/nosepiece to be installed.



6. Thread the new mandrel into the tool by hand until it approaches the #15 hex sleeve and fully depress this sleeve to allow the mandrel to be threaded further until it stops. The mandrel does not need to be torqued. Release the hex sleeve and allow it to fully reengage the mandrel. If the mandrel and hex sleeve do not initially align, rotate the #10 knob while holding onto the mandrel until it clicks up and reengages.
7. Thread the matching nose piece into the #16 by hand. Torqueing the nose piece is optional.

⚠ AVERTISSEMENT ⚠

Etudier, comprendre et suivre toutes les instructions fournies avec ce produit. Lire ces instructions attentivement avant d'installer, d'utiliser, d'entretenir et de réparer cet outil. Conserver ces instructions dans un endroit sécuritaire et accessible.

UTILISATION PRÉVUE DE L'OUTIL

The MNTS8 is designed to set the rivet nuts of the following thread pitches: 1/4-20, 10-24, 8-32, 10-32, M4x0.7, M5x0.8, and M6x1.0. N'utilisez pas cet outil en dehors de l'intention prévue. Ne jamais modifier l'outil à d'autres fins ou pour un autre usage.

⚠ AVERTISSEMENT ⚠

Mise en garde: Pour aider à prévenir les blessures

- L'utilisation de ce produit peut vous exposer à des produits chimiques, notamment l'éthylène glycol, les vapeurs d'essence et les gaz d'échappement des moteurs, qui sont reconnus par l'État de Californie pour causer le cancer, des anomalies congénitales ou des problèmes de reproduction. Pour plus d'informations, visitez www.P65Warnings.ca.gov. Toujours porter un équipement de sécurité, des lunettes de sécurité et des vêtements homologués ANSI lors de l'utilisation de ce produit. Étudier, comprendre et suivre toutes les instructions fournies avec ce produit. Ne pas lire et suivre tous les avertissements et instructions d'utilisation peut entraîner des dommages et des blessures graves ou la mort.
- Toujours porter des lunettes à coques approuvées par l'ANSI lorsque vous utilisez ce produit. (Utilisateurs et Spectateurs).
- Ne jamais utiliser cet outil pour aucune application qui n'est pas conçue.
- Seulement utiliser les accessoires conçus pour cet outil.
- Ne jamais modifier cet outil.
- Le fonctionnement et/ou l'entretien incorrect de cet outil, la modification de cet outil, ou l'utilisation de cet outil avec les accessoires non conçus pour lui devrait causer des blessures graves ou la mort.
- Toujours utiliser les accessoires adéquats pour le travail que vous effectuez.
- Toujours travailler dans un environnement propre, sécuritaire, bien éclairé, organisé et suffisamment équipé.
- Ne pas commencer les réparations sans assurance que le véhicule est en position de sécurité, et ne se déplace pas lors de la réparation.

DÉBALLAGE

Lors du déballage, vérifier que les pièces contenues dans le schéma et la liste des numéros de pièces de la page 7 sont toutes incluses. Si une pièce est manquante ou abîmée, veuillez appeler immédiatement votre distributeur.



Fabriqué à Chine
les spécifications de Matco

1 ANNÉE DE GARANTIE LIMITÉE

Le fabricant garantit à l'acheteur initial que ce produit est exempt de tout vice de matériau et de fabrication pendant une période de une année suivant la date de l'achat.

Le fabricant se réserve le droit de déterminer si la pièce ou les pièces défectueuses sont imputables à un matériau défectueux, à un défaut de fabrication ou à d'autres causes. Les défaillances causées par un accident, une modification ou une utilisation incorrecte ne sont pas couvertes par la présente garantie.

Le fabricant, à sa seule discrétion, réparera ou remplacera sans frais les produits couverts par cette garantie. Les réparations ou les remplacements de produits couverts par cette garantie sont garantis pour le reste de la période de garantie initiale.

Le fabricant ou ses représentants de service autorisés doivent exécuter les réparations sous garantie. Toute réparation du produit effectuée par un représentant de service non-autorisé annulera cette garantie. Les droits couverts par cette garantie sont limités à l'acheteur initial et ne peuvent être transférés aux propriétaires subséquents.

Cette garantie remplace toutes autres garanties, expresses ou implicites, incluant les garanties de valeur marchande ou d'adaptation à un usage particulier. Certains États ou provinces ne permettent pas d'exclure ou de limiter les dommages consécutifs ou indirects, donc les limitations ci-dessus pourraient ne pas s'appliquer.

INFORMATIONS PRODUIT:

Compact design. Less than 8" long and 4.5" wide for one-handed use in confined areas.

Power. Sets rivet nut sizes up to 1/4" easier than any other pistol style tool.

SAE and metric. Includes a rivet nut assortment and mandrel sizes in 8-32, 10-24, 1/4-20, M4, M5 and M6.

TECHNICAL DESCRIPTION:

Weight: 1.54 lbs. (700g)

Length: 7.48" (190mm)

Max working stroke: 7mm

Max effective working stroke: 5mm

NE PAS JETER-DONNER À L'UTILISATEUR



WARNING



Always wear ANSI approved safety goggles when using this product (users and bystanders). Failure to read and follow all warnings and operating instructions may result in damages and serious injuries or death.

DRILL SIZE GUIDE:

Metric

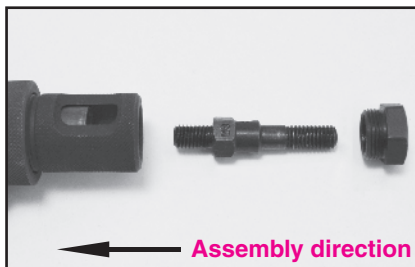
Nut Size	Drill Size
M4	6mm (7/32")
M5	7mm (9/32")
M6	9mm (3/8")

SAE

Nut Size	Drill Size
8-32	6mm (7/32")
10-24	7mm (9/32")
1/4-20	9mm (3/8")

OPERATING INSTRUCTIONS:

1. Choose the rivet nut size to be installed.
2. Install the correct size mandrel/nosepiece for the rivet nut to be installed. See photos and instructions for changing the mandrel/nosepiece and adjustment.
3. Drill a hole in the work product the same size or slightly larger than the outside diameter of the rivet nut to be installed.
4. To install the rivet nut, open the handles outward as far as possible and thread the rivet nut clockwise onto the mandrel until reaching the nosepiece.
5. Insert the rivet nut fastened to the riveter into the pre-drilled hole until flush with the work product, and pull handles inward to secure the rivet nut into the hole. If the rivet nut is loose in the hole, open the handles outward, turn #10 knob clockwise, and pull handles inward until the rivet nut is secure in the hole. Repeat as necessary until the rivet nut is secure in the hole. See adjustment instructions if necessary.
6. Turn the #10 knob counterclockwise until the mandrel is removed from the rivet nut. The rivet nut installation is complete if the rivet nut is secure from movement in the hole.



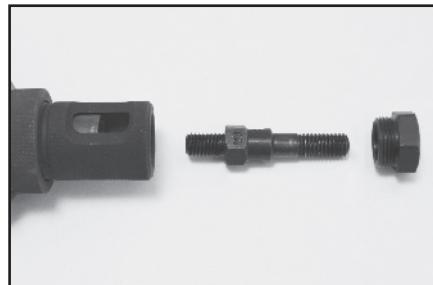
CHANGING MANDREL/NOSEPIECE INSTRUCTIONS:

1. Remove and install the mandrel and nosepieces. Always keep the matched mandrel/nosepiece sets together.
2. Remove nosepiece from #16 sleeve by unthreading the nose piece counterclockwise. This can be done either by hand or with the provided wrench if too tight to do so.

3. Using your thumbnail or tool, press down to depress the #15 inner hexagonal sleeve that sits within the #16 outer sleeve. This should expose the lower hex portion of the mandrel.

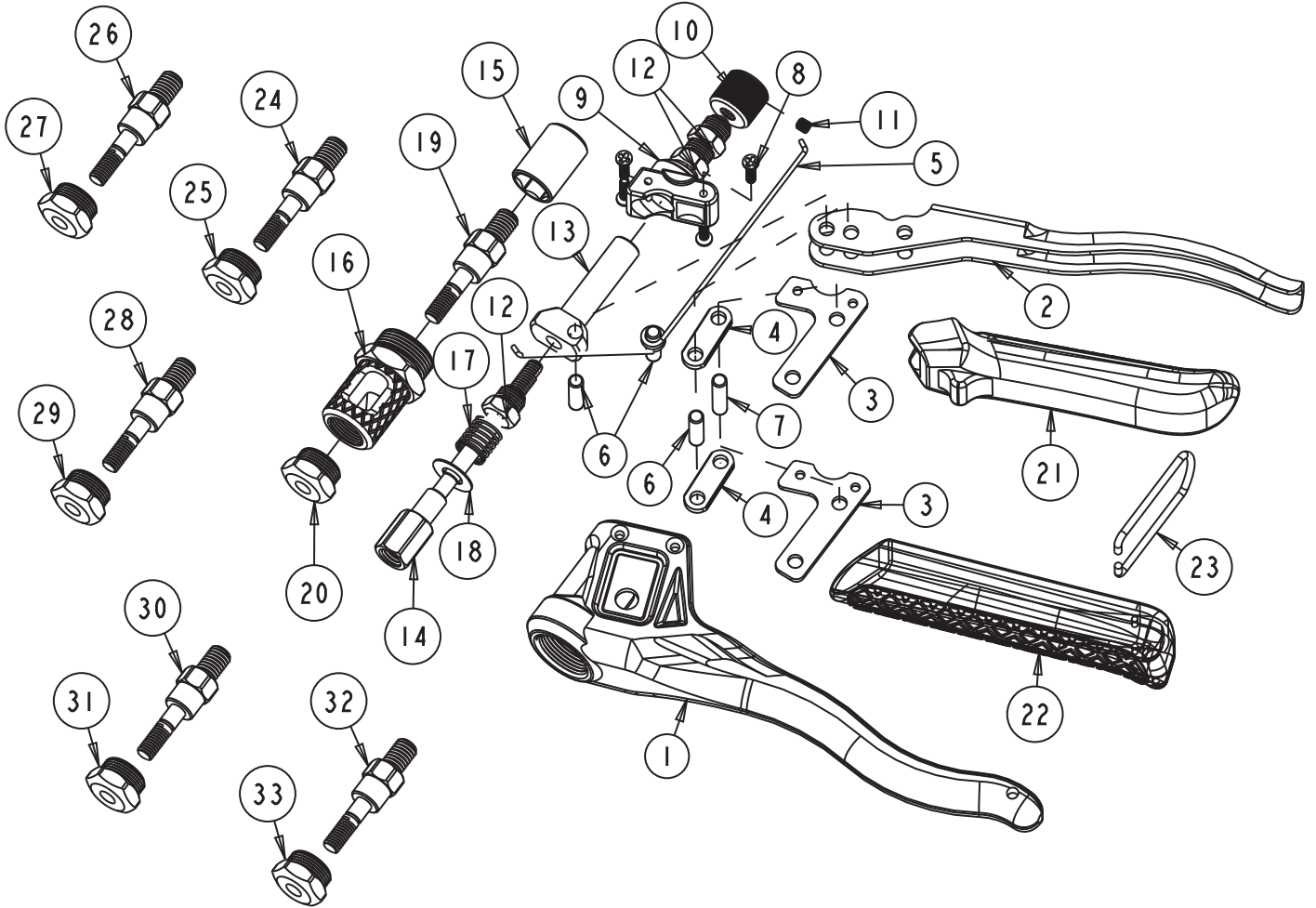


4. Unthread the mandrel by hand to remove it from the sleeve. Once the mandrel has been threaded out far enough to clear the #15 hex sleeve you may release tension on this sleeve collar.
5. Choose the correct mandrel/nosepiece to be installed.



6. Thread the new mandrel into the tool by hand until it approaches the #15 hex sleeve and fully depress this sleeve to allow the mandrel to be threaded further until it stops. The mandrel does not need to be torqued. Release the hex sleeve and allow it to fully reengage the mandrel. If the mandrel and hex sleeve do not initially align, rotate the #10 knob while holding onto the mandrel until it clicks up and reengages.
7. Thread the matching nose piece into the #16 by hand. Torqueing the nose piece is optional.

PARTS BREAKDOWN



Parts List

Index	Part No.	Description	Qty
1	MNTS8	Aluminium Alloy Body	1
2	1443B-02	Top Handle	1
3	1443B-03	Fixed Plate	2
4	1443B-04	Connecting Rod	2
5	1443B-05	Torsional Spring	1
6	1443B-06	5x18 Pin Rod	3
7	1443B-07	5x22 Pin Rod	1
8	1443B-08	3x4 Wafer Head Self Tapping Screw	4
9	1443B-09	Fixing Sleeve	1
10	1443B-10	Knurled Knob	1
11	1443B-11	4x4 Headless Socket Screw	1

Index	Part No.	Description	Qty
12	1443B-12	Spacer	3
13	1443B-13	Loop Bar	1
14	1443B-14	Pull Rod	1
15	1443B-15	Sliding Sleeve	1
16	1443B-16	Sleeve	1
17	1443B-17	Spring	1
18	1443B-18	Spacer	1
19	1443B-A30	M5 Mandrel	1
20	1443B-A31	M5 Nosepiece	1
21	1443B-21	Top Handle Sleeve	1
22	1443B-22	Lower Handle Sleeve	1
23	1443B-23	Pothook	1

Index	Part No.	Description	Qty
24	1443B-24	M4 Mandrel	1
25	1443B-25	M4 Nosepiece	1
26	1443B-A28	M6 Mandrel	1
27	1443B-A29	M6 Nosepiece	1
28	1443B-28	8-32 Mandrel	1
29	1443B-29	8-32 Nosepiece	1
30	1443B-A34	10-24 Mandrel	1
31	1443B-A35	10-24 Nosepiece	1
32	1443B-A32	1/4-20 Mandrel	1
33	1443B-A33	1/4-20 Nosepiece	1