

MSL50 - MATCO SLIDE LIGHT ORANGE



SLIDE LIGHT

INSTRUCTION MANUAL

Please read this instruction manual carefully before using and always keep this manual within easy reach.



CONTENTS
 MSL5 MAIN UNIT
 CHARGER

www.matcotools.com

SLIDE LIGHT

OPERATING INSTRUCTIONS

- To use, slide handle cap to expose charge port and connect USB charger. Plug USB charger into AC power source.
- Slide light indicator light is charging. Continue charging until light turns green, indicating a full charge. Disconnect from charger.
- Charge the light fully a minimum of once per month if not in frequent use, and fully after each use to ensure battery longevity.

CHARGING INSTRUCTIONS

- Depress power switch to operate flashing light.
- Slide handle fully open to activate work light, slide handle fully closed to turn off work light.

Specifications

Beam size: 175 lumens panel light, 180 lumens flashlight

Battery: 3.7V, 400mAh Li-ion battery

Charge time: 2.5 hours

Beam distance: 200 meters CDM (0.25 lumens/LED)

Material: PC

Contents: 1 Light, adapter, instructions

Charging adapter: 4.2C, 1.80mA

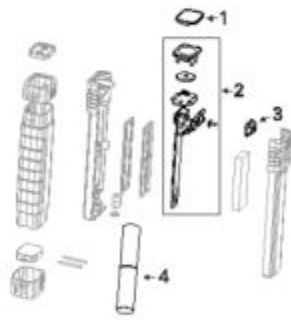
UL, OUL, and CE approved, overcharge protection



- The laser may emit a laser beam under certain conditions. Do not stare into the laser beam.
- Do not operate laser with water.
- Do not use the laser as a flashlight or for any other purpose.
- Do not use the laser in a hazardous environment.
- Do not use the laser in a confined space.
- Do not use the laser in a flammable or explosive atmosphere.
- Do not use the laser in a high pressure environment.
- Do not use the laser in a high temperature environment.
- Do not use the laser in a high humidity environment.
- Do not use the laser in a high dust environment.
- Do not use the laser in a high vibration environment.
- Do not use the laser in a high magnetic field environment.
- Do not use the laser in a high electric field environment.
- Do not use the laser in a high acoustic field environment.
- Do not use the laser in a high radiation environment.
- Do not use the laser in a high electromagnetic interference environment.
- Do not use the laser in a high electromagnetic compatibility environment.
- Do not use the laser in a high electromagnetic compatibility environment.
- Do not use the laser in a high electromagnetic compatibility environment.

Laser batteries must be properly disposed of once the battery is no longer being used. To find a recycling location near you, refer to the eWaste cycle website: <http://www.eWastecycle.org/>.

REPLACEMENT PARTS



| | DESCRIPTION | PART # |
|---|------------------------|----------|
| 1 | LENS | MSL5-1 |
| 2 | REPL SWITCH PORT/COVER | MSL5-2 |
| 3 | RED SWITCH COVER | MSL5-3 |
| 3 | GREEN SWITCH COVER | MSL5-3 |
| 3 | ORANGE SWITCH COVER | MSL5-3-3 |
| 4 | LI-ION BATTERY PACK | MSL5-4 |
| 5 | AC CHARGER | MSL5-5 |
| 6 | REPL USB CORD | MSL5-6 |



SLIDE LIGHT

1 Year Limited Warranty

The MSL5 offers a limited one year warranty. Please see your authorized Master/Store Distributor for replacement parts.

Warranty is void if the product is damaged, altered, or used in a manner not intended by the manufacturer. The manufacturer is not responsible for any damage to the product caused by misuse, abuse, or neglect.

Always read and follow the instructions and warnings on the product and its packaging. Do not use the product if you are unable to read the instructions or if you are unable to follow the instructions. Do not use the product if you are unable to follow the instructions or if you are unable to follow the instructions.

The manufacturer is not responsible for any damage to the product caused by misuse, abuse, or neglect. The manufacturer is not responsible for any damage to the product caused by misuse, abuse, or neglect. The manufacturer is not responsible for any damage to the product caused by misuse, abuse, or neglect.

www.matco.com

www.matcotools.com

Item: MSL50

Description: MATCO SLIDE LIGHT ORANGE

Notes: N/A

| Figure No | Part Number | Description | No. Reqd | Warranty Code |
|-----------|-------------|------------------------------|----------|---------------|
| 1 | *ETMSL5-1 | REPLACEMENT LENS | 1 | |
| 2 | ETMSL5-2 | REPLACEMENT SWITCH | 1 | X |
| 3 | ETMSL5OR-3 | SWITCH COVER F/ MSL50 | 1 | X |
| 4 | ETMSL5-4 | LI-ION BATTERY PACK F/MSL50 | 1 | X |
| 5 | ETMSL5-5 | A/C CHARGER F/MSL5 | 1 | D |
| 6 | ETMSL5-6 | REPLACEMENT USB CORD F/ MSL5 | 1 | D |