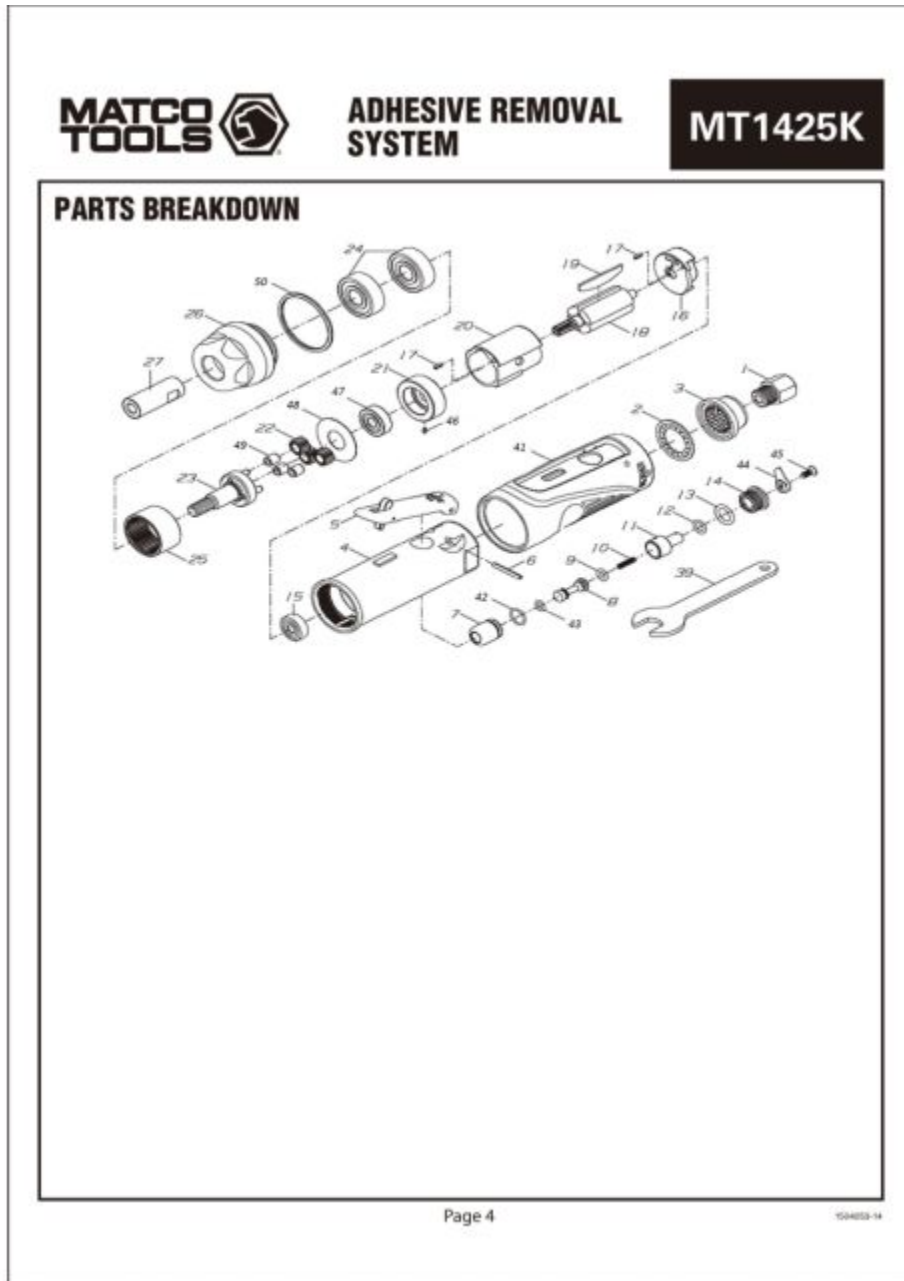


MT1425K - ADHESIVE REMOVAL SYSTEM



Item: MT1425K

Description: ADHESIVE REMOVAL SYSTEM

Notes: N/A

Figure No	Part Number	Description	No. Reqd	Warranty Code
1	*H1T210-A32	INLET BUSHING	1	
2	H1T210-A31	EXHAUST WASHER F/1206A	1	X
3	*H1MATMT1425-03	EXHAUST DEFLECTOR	1	
4	*H1203-04	MOTOR HOUSING	1	
5	*H1201-05	SAFETY LEVER	1	
6	*H1202-28	PIN	1	
7	*H1T210-A26	BUSHING	1	
8	*H1T210-A25	THROTTLE VALVE	1	
9	*H1T210-A24	O-RING	1	
10	*H1T210-A23	SPRING	1	
11	*H1500ET-11	AIR REGULATOR	1	
12	*H1T210-A21	O-RING	1	
13	*H1T210-A20	O-RING	1	
14	*H1T210-A19	VALVE SCREW	1	
15	H1626ZZ	BEARING	1	X
16	*H1203-16	REAR PLATE	1	
17	*H1T210-A11	PIN	2	
18	*H1203-18	ROTOR	1	
19	*H1T210-A15	ROTOR BLADE	4	
20	*H1203-20	CYLINDER (STEEL)	1	
21	*H1203-21	FRONT END PLATE	1	
22	*H1203-22	IDLER GEAR	3	
23	*H1203-23	IDLER GEAR PLATE	1	
24	*H16201ZZ	BALL BEARING	2	
25	*H1203-25	RING GEAR	1	
26	*H1MATMT1425-26A	GEAR CAP	1	
27	*H1203-27	SPINDLE	1	
39	*H1203-39	WRENCH	1	
40	H1MATMT1425E	ERASER PAD FOR MT1425	3	T
41	*H1MATMT1425-04A	HOUSING SLEEVE	1	
42	*H1MATMT1425-12A	O-RING	1	
43	*H1T210-A25P	O-RING	1	
44	*H1500ET-12A	SWITCH KNOB	1	

45	*H1500ET-12B	SCREW	1	
46	*H1T210-A11P	PIN	1	
47	H12760-17	BALL BEARING	1	X
48	*H1203-21C	WASHER	1	
49	*H1203-22A	BUSHING	3	
50	*H1203-06	RING	1	