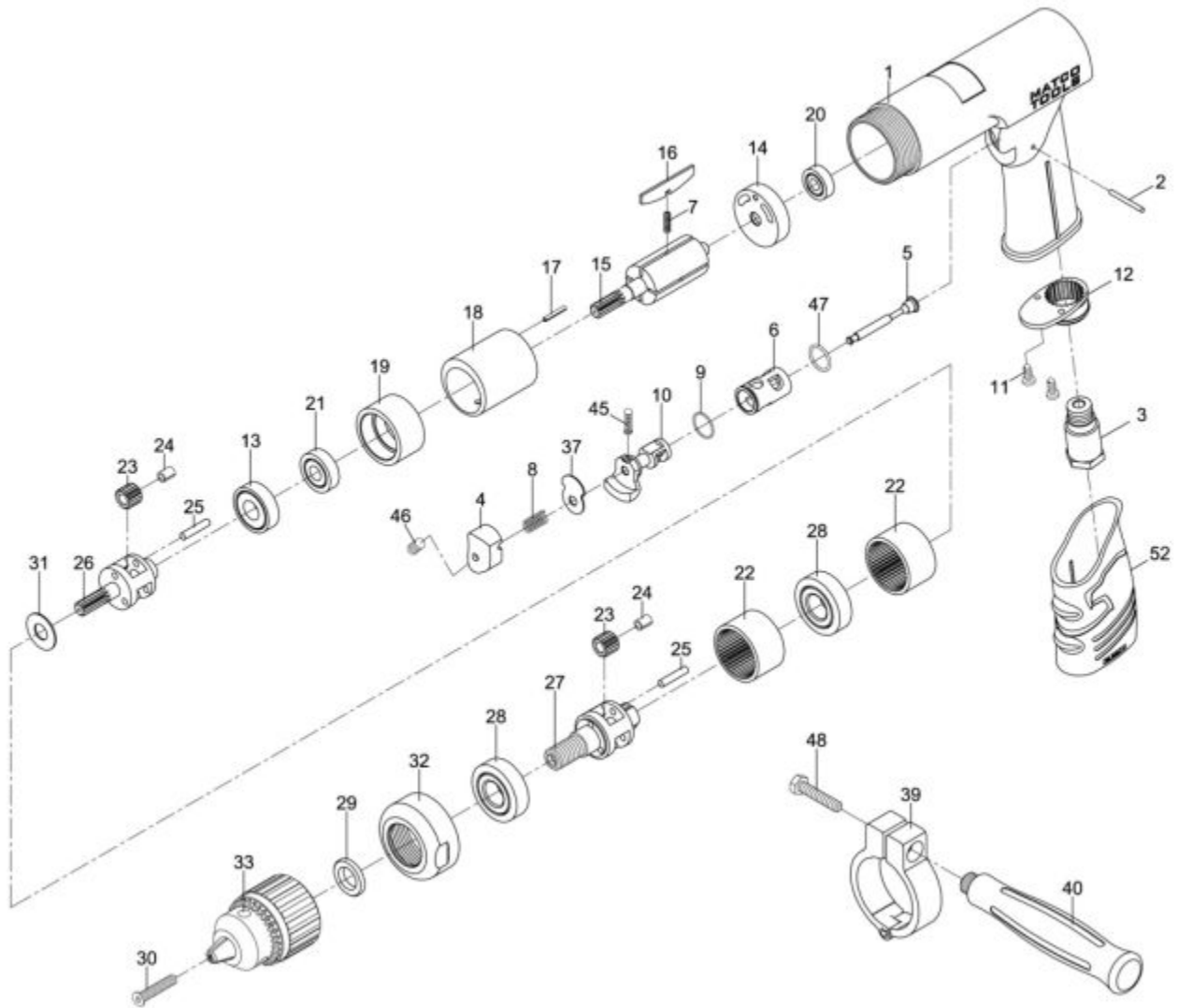


MT1827A - 1/2" HD AIR DRILL



Item: MT1827A

Description: 1/2" HD AIR DRILL

Notes: N/A - The part number for CHUCK KEY is K7RS182733A

Figure No	Part Number	Description	No. Reqd	Warranty Code
1	K7RS182701	MOTOR HOUSING MT1827	1	X
2	K7RS43009	PIN - MINI SANDER	1	X
3	K7RS79403N	AIR INLET F/ MT1827	1	X
4	K7RS79404N	TRIGGER - REV. AIR DRILL	1	X
5	K7RS79405N	VALVE STEM SET F/RL150	1	X
6	K7RS182706	REVERSE BUSHING MT1827	1	X
7	*K7null	SPRING (INCLUDED WITH ITEM #16)	4	
8	K7RS79408N	VALVE SPRING - REV. AIR DRILL	1	X
9	K7RS79409N	O RING F/RL150	1	X
10	K7RS182710	REVERSE LEVER MT1827	1	X
11	K7RS43007	SCREW F/RL430	2	X
12	K7RS76232	EXHAUST DIFFUSER F/MT1889	1	X
13	*K7RS	BALL BEARING (6001ZZ)	1	
14	K7RS182714	REAR PLATE FOR MT1827	1	X
15	K7RS182715	ROTOR FOR MT1827	1	X
16	K7RS182716S	SET OF 4 ROTOR BLADES MT1827	1	X
17	K7RS182717	SPRING PIN FOR MT1827	1	X
18	K7RS182718	CYLINDER F/MT1827	1	X
19	K7RS182719	FRONT END PLATE	1	X
20	K7RS108A12	BEARING FOR RL838	1	X
21	K7RS82630A	BEARING F/SX826A	1	X
22	K7RS182722	INTERNAL GEAR	2	X
23	K7RS182723	PLANET GEAR	6	X
24	*K7null	OILLESS BEARING (4X6X8 INCLUDED IN #23)	6	
25	K7RS182725	PIN F/MT1827	6	X
26	K7RS182726	WORK SPINDLE	1	X
27	K7RS182727A	WORK SPINDLE F/MT1889	1	X
28	K7RS21109	BEARING F/MT1889	2	X
29	K7RS182729A	WASHER F/MT1889	1	X
30	K7RS182730	CHUCK SCREW F/MT1889	1	X
31	K7RS182731	WASHER	1	X
32	K7RS182732	CLAMP NUT F/MT1889	1	X
33	5036	1/2 CAP CHUCK 1/2X20 MOUNT	1	D

33	K7RS182733K	KEY F/MT1827	1	X
37	K7RS182737	WASHER	1	X
39	K7RS182739	RETAINER	1	X
40	K7RS182740	HANDLE F/MT1827	1	X
45	K7RS182745	DETENT	1	X
46	K7RS79438N	SET SCREW - REV. AIR DRILL	1	X
47	K7RS79431N	O RING	1	X
48	K7RS182748	BOLT	1	X
52	K7RS182752	HANDLE GRIP	1	X