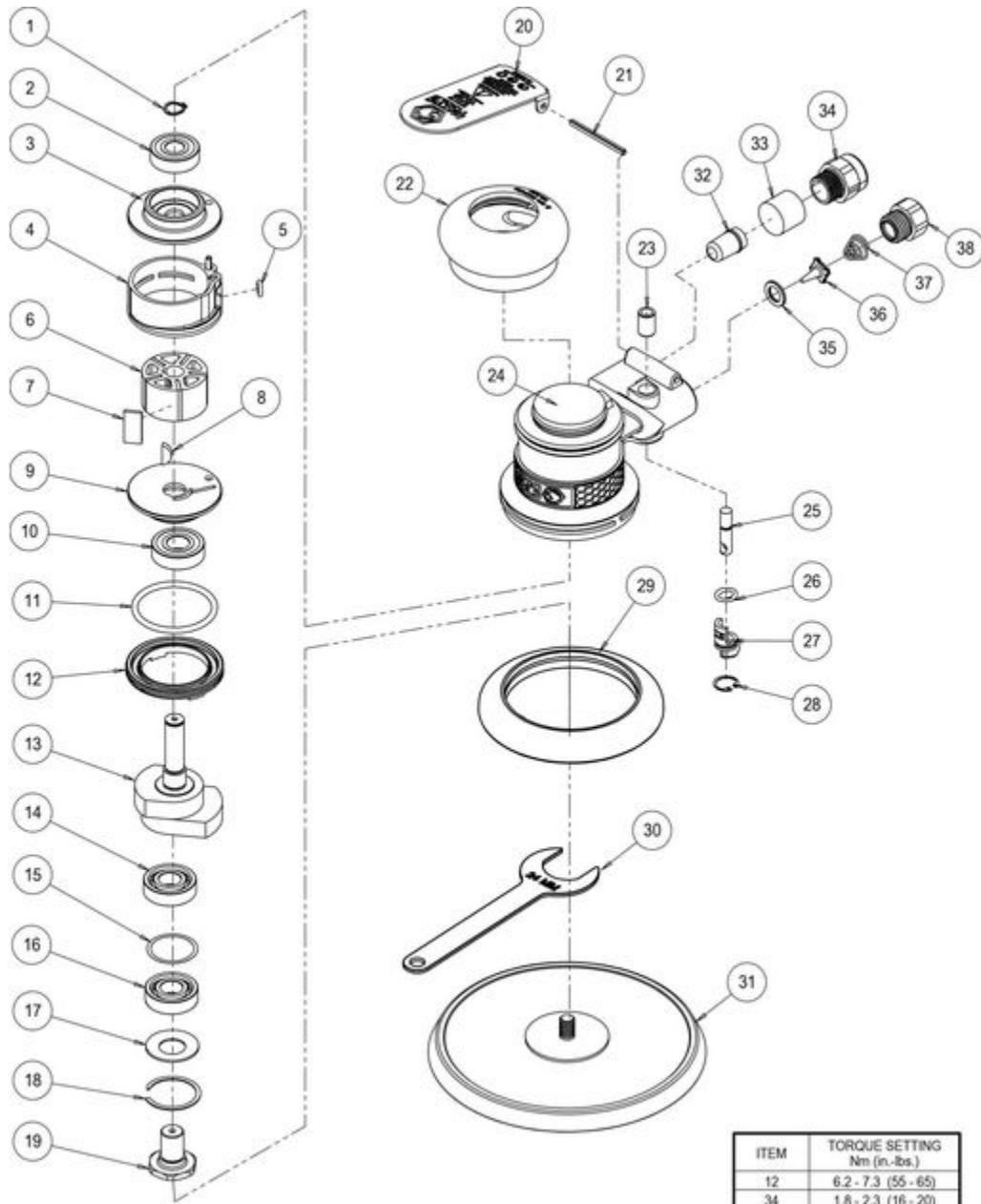


MT2116 - 3/16" 6" PALM SANDER



Item: MT2116

Description: 3/16" 6" PALM SANDER

Notes: MT2116 AND MT2132 USE THE SAME MANUAL

Figure No	Part Number	Description	No. Reqd	Warranty Code
1	MT1YK01	EXTERNAL RETAINING RING	1	X
2	MT1YK02	BEARING	1	X
3	MT1YK03	REAR ENDPLATE	1	X
4	MT1YK04	CYLINDER ASSEMBLY	1	X
5	MT1YK05	O-RING	1	X
6	MT1YK06	ROTOR	1	X
7	MT1YK07	VANE	5	X
8	MT1YK08	WOODRUFF KEY	1	X
9	MT1YK09	FRONT ENDPLATE	1	X
10	MT1YK10	BEARING	1	X
11	MT1YK11	O-RING	1	X
12	MT1YK12	LOCK RING	1	X
13	MT1YK13	6 X 3/16" ORBIT SHAFT BALANCER	1	X
13	MT1YL13	6 X 3/32" ORBIT SHAFT BALANCER	1	X
14	MT1YK14	BEARING	1	X
15	MT1YK15	SPACER	1	X
16	MT1YK16	BEARING	1	X
17	MT1YK17	BELLEVILLE WASHER	1	X
18	MT1YK18	RETAINING RING	1	X
19	MT1YK19	SPINDLE	1	X
20	MT1YK20	THROTTLE LEVER F/ 3/16" MT2116	1	X
20	MT1YL20	THROTTLE LEVER F/ 3/32" MT2132	1	X
21	MT1YK21	LEVER SPRING PIN	1	X
22	MT1YK22	2 3/4 IN. GRIP	1	X
23	MT1YK23	VALVE SLEEVE	1	X
24	MT1YK24	HOUSING	1	X
25	MT1YK25	VALVE STEM ASSEMBLY	1	X
26	MT1YK26	O-RING	1	X
27	MT1YK27	SPEED CONTROL	1	X
28	MT1YK28	INTERNAL RETAINING RING	1	X
29	MT1YK29	5/6 IN. NON-VACUUM SHROUD	1	X
30	MT1YK30	24 MM PAD WRENCH	1	X
31	MT1YK31	6" LOW PROF NV J-HOOK FACE PAD	1	X

32	MT1YK32	INTERNAL MUFFLER	1	X
33	MT1YK33	MUFFLER INSERT	1	X
34	MT1YK34	MUFFLER HOUSING	1	X
35	MT1YK35	VALVE SEAT	1	X
36	MT1YK36	VALVE	1	X
37	MT1YK37	VALVE SPRING	1	X
38	MT1YK38	INLET BUSHING ASSEMBLY	1	X