



MT2260

- Operating Instructions
- Warning Information
- Parts Breakdown

LLAVE NEUMATICA DE IMPACTO DE 1/2"
CLÉ À PERCUSSION DE 1/2 PO

1" IMPACT 2 WRENCH



SPECIFICATIONS

MT2260

Free Speed.....	11,500 RPM
Breakaway Torque.....	650 ft. lbs.
Working Torque Range	25-350 ft. lbs.
Air Inlet.....	1/4" NPT
Average Air Consumption	3.5 cfm
Recommended Hose Size.....	3/8" I.D.
Net Weight.....	3 Lbs.
Overall Length	6-3/8"
Sound Pressure Level.....	99 dBA
Vibration Level.....	6.6 m/sec ²

! WARNING



ALWAYS READ INSTRUCTIONS BEFORE USING POWER TOOLS



ALWAYS WEAR SAFETY GOGGLES



ALWAYS WEAR HEARING PROTECTION



AVOID PROLONGED EXPOSURE TO VIBRATION

! WARNING

Some dust created by power sanding, sawing, grinding, drilling, and other construction activities contains chemicals known to cause cancer, birth defects or other reproductive harm. Some examples of these chemicals are:

- lead from lead-based paints,
- crystalline silica from bricks and cement and other masonry products, and
- arsenic and chromium from chemically-treated lumber.

Your risk from these exposures varies, depending on how often you do this type of work. To reduce your exposure to these chemicals: work in a well ventilated area, and work with approved safety equipment, such as those dust masks that are specially designed to filter out microscopic particles.

! WARNING

FAILURE TO OBSERVE THESE WARNINGS COULD RESULT IN INJURY

THIS INSTRUCTION MANUAL CONTAINS IMPORTANT SAFETY INFORMATION.

READ THIS INSTRUCTION MANUAL CAREFULLY AND UNDERSTAND ALL INFORMATION BEFORE OPERATING THIS TOOL.



- Read and understand all instructions. Failure to follow all instructions listed below, may result in electric shock, fire, explosion and/or serious personal injury. It is the responsibility of the owner to make sure all personnel read this manual prior to using the tool. It is also the responsibility of the tool owner to keep this manual intact and in a convenient location for all to see and read. If the manual or product labels are lost or not legible, contact Matco Tools for replacements. If the operator is not fluent in English, the product and safety instructions shall be read and discussed with the operator in the operator's native language by the purchaser/owner or his designee, making sure that the operator comprehends its contents.

- Always operate, inspect and maintain this tool in accordance with American National Standards Institute Safety Code of Portable Air Tools (ANSI B186.1) and any other applicable safety codes and regulations.

- For safety, top performance and maximum durability of parts, operate this tool at 90 psig; 6.2 bar max air pressure with 3/8" diameter air supply hose.

- Always wear impact-resistant eye protection when operating or performing maintenance on this tool (users and bystanders).

- High sound levels can cause permanent hearing loss. Always use hearing protection as recommended by your employer an OSHA regulations while using this tool (users and bystanders).

- Keep the tool in efficient operating condition.

- Operators and maintenance personnel must be physically able to handle the bulk, weight and power of this tool.

- Air under pressure can cause severe injury. Never direct air at yourself or others. Always turn off the air supply, drain hose of air pressure and detach tool from air supply before installing, removing or adjusting any accessory on this tool, or before performing any maintenance on this tool. Failure to do so could result in injury. Whip hoses can cause serious injury. Always check for damaged, frayed or loose hoses and fittings, and replace immediately. Do not use quick detach couplings at tool. See instructions for correct set-up.

- Keep tool out of reach of children.

- Air powered tools can vibrate in use. Vibration, repetitive motions or uncomfortable positions over extended periods of time may be harmful to your hands and arms. Discontinue use of tool if discomfort, tingling feeling or pain occurs. Seek medical advice before resuming use.

- Slipping, tripping and/or falling while operating air tools can be a major cause of serious injury or death. Be aware of excess hose left on the walking or work surface.

- Keep body working stance balanced and firm. Do not overreach when operating the tool.

- Place the tool on the work before starting the tool. Do not point or indulge in any horseplay with this tool.

- Note direction of rotation BEFORE operating this tool.

- Anticipate and be alert for sudden changes in motion during start up and operation of any power tool.

- Do not carry tool by the hose. Protect the hose from sharp objects and heat.

- Tool shaft may continue to rotate briefly after throttle is released. Avoid direct contact with accessories during and after use. Gloves will reduce the risk of cuts or burns.

- Keep away from rotating end of tool. Do not wear jewelry or loose clothing. Secure long hair. Scalping can occur if hair is not kept away from tool and accessories. Choking can occur if neckwear is not kept away from tool and accessories.

- Do not use (or modify) the tool for any other purpose than that for which it was designed without consulting the manufacturer's authorized representative.

- Impact wrenches are not torque control devices. Fasteners with specific torque requirements must be checked with suitable torque measuring devices after installation with an impact wrench.

- **Use only impact sockets or accessories. Do not use hand sockets or accessories.**

- **Use only impact sockets and accessories that are recommended by the manufacturer for your model. Accessories that may be suitable for one tool may create a risk of injury when used on another tool.**

- Use accessories recommended by Matco Tools.

- Do not lubricate tools with flammable or volatile liquids such as kerosene, diesel or jet fuel.

- This tool is not insulated against electric shock.

- This tool must not be used in explosive atmospheres.

- Servicing and repairs should only be made by an authorized service center.

- Do not force tool beyond its rated capacity.

- Do not remove any labels. Replace damaged labels.



WARNING: This product can expose you to chemicals including nickel which is known to the State of California to cause cancer and birth defects or other reproductive harm. For more information go to www.P65Warnings.ca.gov.

MT2260 1/2" IMPACT WRENCH

POWER MANAGEMENT SYSTEM AND TOOL OPERATION

This tool includes a power management system that allows the operator to adjust the amount of output power in the clockwise direction (forward). There is no power management system present in the counter-clockwise direction (reverse). To adjust the power output in the forward direction, turn the dial shown below left or right in the desired power direction. Power output is indicated by enlarging black swoosh on back housing. Lowest power setting indicated by thin swoosh area with highest power setting being thickest swoosh area.

The Power management system is only for reference and do not act as specific power settings. This tool includes a tip valve variable speed trigger design that further allows the operator to reduce the power output.

This tool is an impacting tool and not a torque meter. When specific torque is required, it must be checked with a torque meter after fitting the fastener with the Impact.

If a fastener does not move within five seconds, use a larger size Impact. Do not use Impact Wrench beyond rated capacity, as this can drastically reduce the tool life.

Always turn off the air supply, drain hose of air pressure and detach tool from air supply before installing, removing or adjusting any part or accessory on this tool, or before performing any maintenance on this tool.

NOTE: Actual torque on a fastener is directly related to joint hardness, tool speed, condition of socket and the time the tool is allowed to impact.

Use the simplest possible tool-to-socket hook up. Every connection absorbs energy and reduces power.

NOTE: During operation, safety goggles must always be worn to guard against flying rust and chips (users and bystanders).

FEATURES

- Customize dBA with exclusive removable muffler plate.
- Work easily with one-hand push button design and an overall weight of just 3 lbs
- Power through your day with rear housing power adjustment
- Take full control with variable speed trigger
- Get a grip with textured housing and durable ergonomic design

AIR SUPPLY

Tools operate on a wide range of air pressures. It is recommended that air pressure measures 90 psig at the tool with the trigger fully depressed and no load applied to the tool. Higher pressure (over 90 psig; 6.2 bar) raises performance beyond the rated capacity of the tool, which will shorten tool life and could cause injury.

Always use clean, dry air. Dust, corrosive fumes and/or water in the air line will cause damage to the tool. Drain the water from air lines and compressor prior to running tool. Clean the air inlet filter screen weekly. The recommended hookup procedure can be viewed in the below figure.

The air inlet used for connecting air supply has standard 1/4" NPT. Line pressure should be increased to compensate for unusually long air hoses (over 25 feet). Minimum hose diameter should be 3/8" I.D. and fittings should have the same inside dimensions and be tightly secured.

⚠ WARNING

Ensure an accessible emergency shut off valve has been installed in the air supply line and make others aware of its location.

TROUBLESHOOTING

Other factors outside the tool may cause loss of power or erratic action. Reduced compressor output, excessive drain on the air line, moisture or restrictions in air pipes or the use of hose connections of improper size or poor conditions may reduce air supply. Grit or gum deposits in the tool may cut power and may be corrected by cleaning the air strainer and flushing out the tool with gum solvent oil or an equal mixture of SAE #10 and kerosene. If outside conditions are in order, disconnect tool from hose and take tool to your nearest authorized service center.

LUBRICATION & MAINTENANCE

Lubricate the air motor daily with high quality air tool oil. If no air line oiler is used, run 1/2 oz. of oil through the tool. The oil can be squirted into the tool air inlet or into the hose at the nearest connection to the air supply, then run the tool. A rust inhibitive oil is acceptable for air tools.

⚠ WARNING

After an air tool has been lubricated, oil will discharge through the exhaust port during the first few seconds of operation. The exhaust port must be covered with a towel before applying air pressure to prevent serious injury.

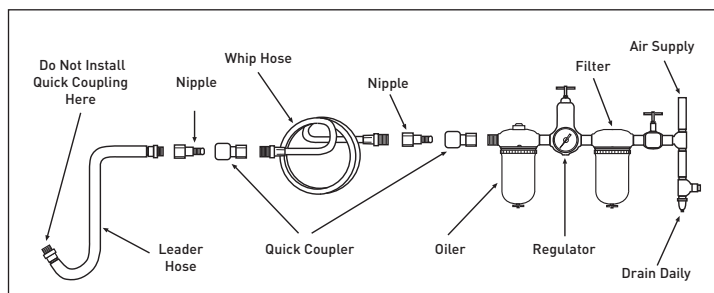


FIG. 1

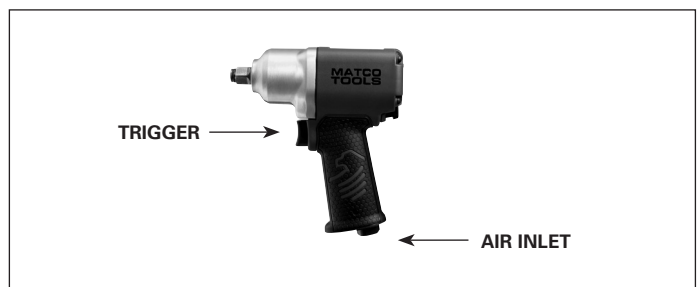


FIG. 2

MT2260 1/2" IMPACT WRENCH

WARRANTY

Matco warrants this air tool for a period of 1 year to the consumer. We will repair any MT Series air tool covered under this warranty which proves to be defective in material or workmanship during the warranty period. In order to have your tool repaired, return the tool to any of the Matco Authorized Warranty Centers listed, freight prepaid. Please include a copy of your proof of purchase and a brief description of the problem. The tool will be inspected and if any part or parts are found to be defective in material or workmanship, the tool will be repaired free of charge and returned to you freight prepaid.

This warranty gives you specific rights. You may also have other rights which vary from state to state.

The foregoing obligation is Matco's sole liability under this or any implied warranty and under no circumstances shall Matco be liable for any incidental or consequential damages.

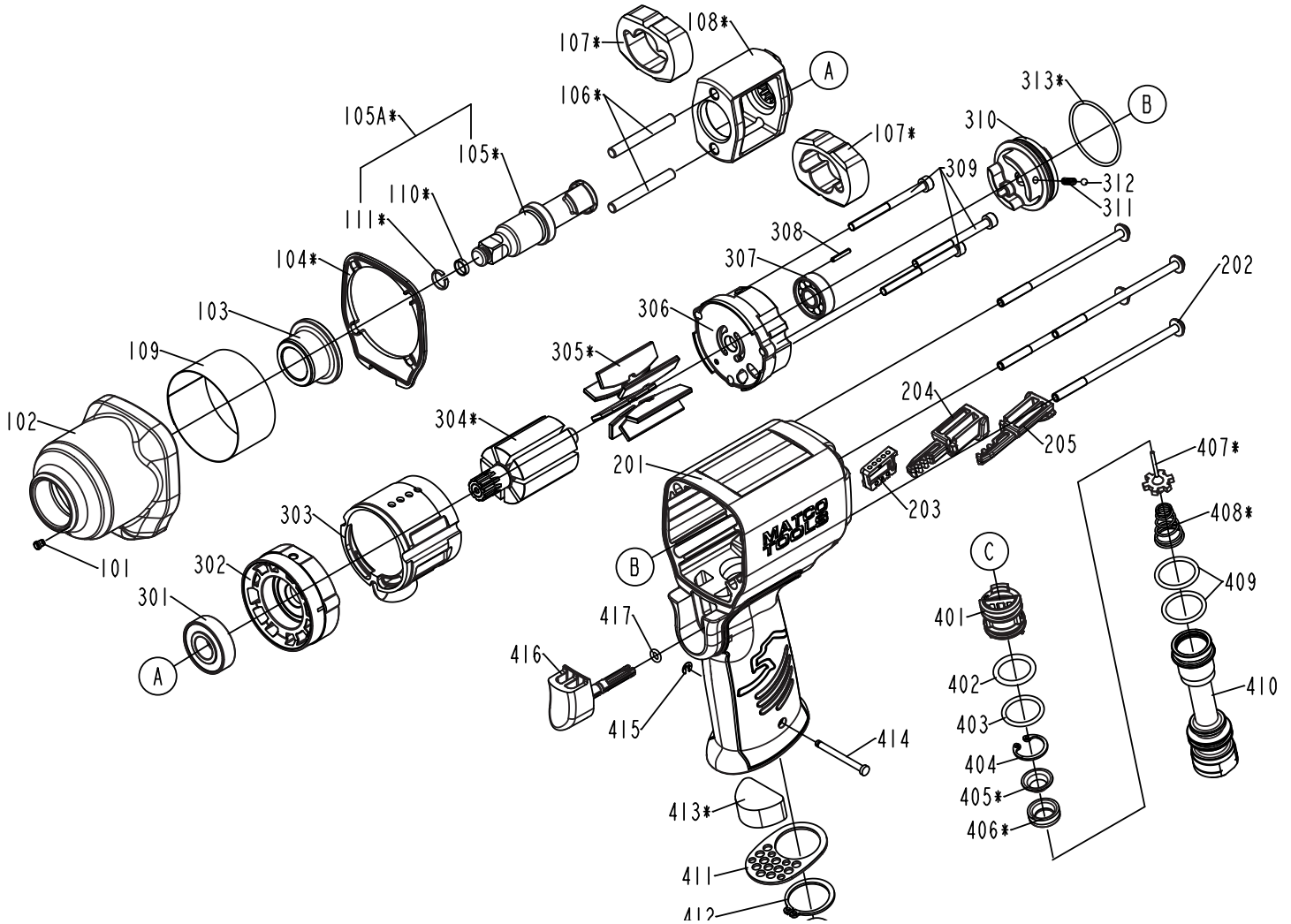
Note: Some states do not allow the exclusion or limitation of incidental or consequential damages so the above limitation or exclusion may not apply to you.

**NATIONAL MACHINE GROUP EAST
AIR TOOL REPAIR CENTER**
1330 Commerce Dr.
Stow, OH 44224
(330) 688-6494

**NATIONAL MACHINE GROUP WEST
AIR TOOL REPAIR CENTER**
2223 S. Wilson Street
Tempe, AZ 85282
(480) 966-1097

HT PNEUMATIC REBUILDERS
22 Goodmark Place Unit #8
Toronto, ON M9w 6R2
(416) 213-0172

MT2260 1/2" IMPACT WRENCH



Item	Parts No	Parts Name	Qty
101	RS1837220	Hammer Case Grease Fitting	1
102	RS222102	Hammer Case	1
103	RS1081103	Hammer Case Bushing	1
104	RS222104	Packing - Hammer Case	1
105A	RS2260105	1/2" Anvil Assembly (includes #110 & #111)	1
106	RS1081107	Hammer Frame Pin	2
107	RS2150107	Hammer	2
108	RS1081109	Hammer Frame	1
109	RS222109	Steel Ring	1
110	RS4135104	O-Ring	1
111	RS1761104	Socket Retainer	1
201	RS222201	Housing Assembly (includes #203)	1
202	RS222202	Half Round HD HEX Bolt	4
203	RS0260203	Stopper (included w/#201)	1
204	RS747061	Forward Button	1
205	RS747051	Reverse Button	1
301	RS222301	Bearing	1
302	RS222302	Front Bearing Plate	1
303	RS222303	Cylinder	1
304	RS222304	Rotor	1
305	RS222305	Blades	7
306	RS222306	Rear End Plate	1
307	RS222307	Bearing	1
308	RS222308	Spring Pin	1

Item	Parts No	Parts Name	Qty
309	RS222309	Hex. Socket Head Bolt	3
310	RS222310	Regulator	1
311	RS0260313	Positioning Spring	1
312	RS1734416	Steel Ball (3mm)	1
313	RS222313	O-Ring	1
401	RS222401	Reverse Valve	1
402	RS1074410	O-Ring	1
403	RS222403	O-Ring	1
404	RS0260404	C-Ring	1
405	RS0260405	Seal Bushing	1
406	RS0260406	Seal	1
407	RS0260407	Tip Valve	1
408	RS1735406	Spring	1
409	RS222409	O-Ring	2
410	RS0260409	Air Inlet	1
411	RS222411	Deflector	1
412	RS0260412	S-Ring	1
413	RS0260410	Muffler	1
414	RS0260415	Latch Pin	1
415	RS4150424	E-Ring	1
416	RS0260413	Trigger	1
417	RS0260414	O-Ring	1
not shown	RSMT2260LK	Product Label Kit	1