

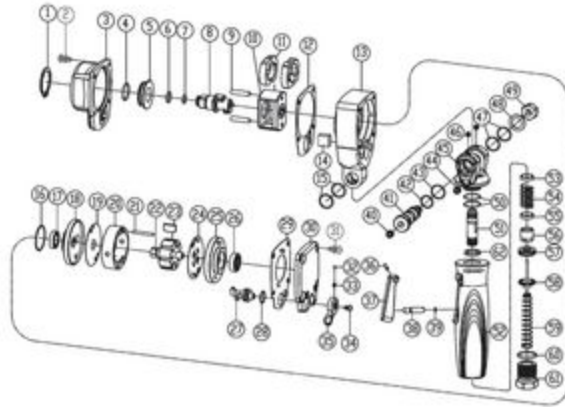
MT2612 - 1/2" DUAL FLEX STUBBY IMPACT



1/2" DUAL FLEX  
ANGLE IMPACT WRENCH

MT2612

**PARTS BREAKDOWN**



Item: MT2612

Description: 1/2" DUAL FLEX STUBBY IMPACT

Notes: N/A

Figure No	Part Number	Description	No. Reqd	Warranty Code
1	*H1MT2612-01	C-RING	1	
2	*H1MT2612-02	SCREW	1	
3	*H1MT2612-03	HAMMER CASE	1	
4	*H1MT2612-04	O-RING	1	
5	*H1MT2612-05	BUSHING	1	
6	*H1MT2612-06	ANVIL COLLAR	1	
7	*H1MT2612-07	O-RING	1	
8	*H1MT2612-08	ANVIL	1	
9	*H1MT2612-09	HAMMER PIN	1	
10	*H1MT2612-10	HAMMER CAGE	1	
11	*H1MT2612-11	HAMMER DOG	1	
12	*H1MT2612-12	FRONT GASKET	1	
13	*H1MT2612-13	MOTOR HOUSING	1	
14	*H1MT2612-14	MUFFLER	1	
15	*H1MT2612-15	O-RING	1	
16	*H1MT2612-16	O-RING	1	
17	*H1MT2612-17	BALL BEARING	1	
18	*H1MT2612-18	FRONT PLATE	1	
19	*H1MT2612-19	FRONT PLATE WASHER	1	
20	*H1MT2612-20	CYLINDER	1	
21	*H1MT2612-21	SPRING PIN	1	
22	*H1MT2612-22	ROTOR	1	
23	*H1MT2612-23	ROTOR BLADE	1	
24	*H1MT2612-24	REAR PLATE WASHER	1	
25	*H1MT2612-25	REAR PLATE	1	
26	*H1MT2612-26	BALL BEARING	1	
27	*H1MT2612-27	REVERSE VALVE	1	
28	*H1MT2612-28	O-RING	1	
29	*H1MT2612-29	REAR GASKET	1	
30	*H1MT2612-30	REAR COVER	1	
31	*H1MT2612-31	SCREW	1	
32	*H1MT2612-32	STEEL BALL	1	
33	*H1MT2612-33	SPRING	1	

34	*H1MT2612-34	SCREW	1
35	*H1MT2612-35	REVERSE LEVER	1
36	*H1MT2612-36	SPRING PIN	1
37	*H1MT2612-37	TRIGGER	1
38	*H1MT2612-38	PIN	1
39	*H1MT2612-39	O-RING	1
40	*H1MT2612-40	SET SCREW	1
41	*H1MT2612-41	SHAFT	1
42	*H1MT2612-42	O-RING	1
43	*H1MT2612-43	O-RING	1
44	*H1MT2612-44	SET SCREW	1
45	*H1MT2612-45	TURN BASE	1
46	*H1MT2612-46	SET SCREW	1
47	*H1MT2612-47	O-RING	1
48	*H1MT2612-48	WASHER	1
49	*H1MT2612-49	LOCK NUT	1
50	*H1MT2612-50	O-RING	1
51	*H1MT2612-51	JOINT TUBE	1
52	*H1MT2612-52	HANDLE GRIP	1
53	*H1MT2612-53	WASHER	1
54	*H1MT2612-54	SPRING	1
55	*H1MT2612-55	WASHER	1
56	*H1MT2612-56	NUT	1
57	*H1MT2612-57	RETAINER	1
58	*H1MT2612-58	VALVE STEM	1
59	*H1MT2612-59	SPRING	1
60	*H1MT2612-60	O-RING	1
61	*H1MT2612-61	1/4 NPT HOSE ADAPTER	1