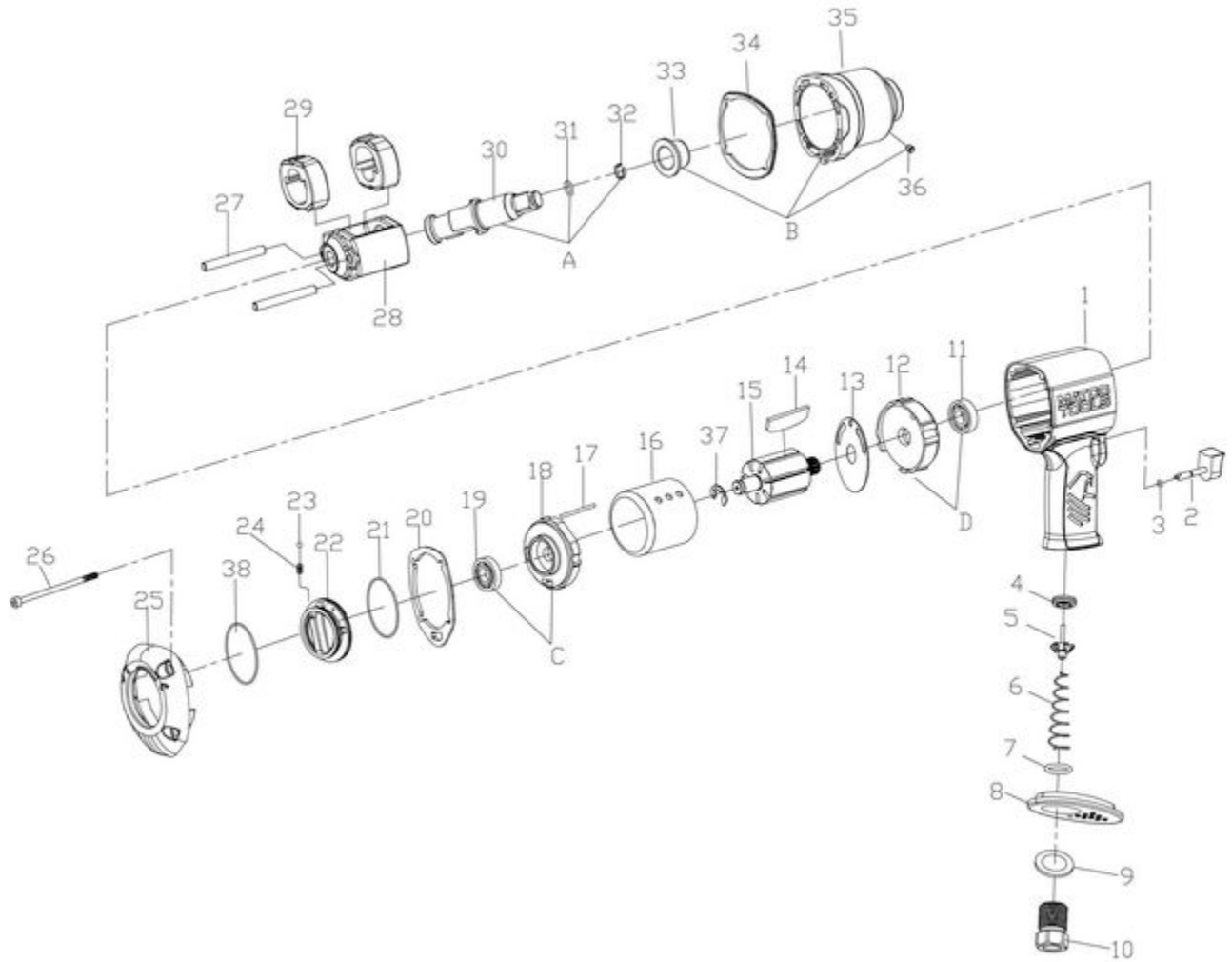


MT2739 - 1/2" IMPACT WRENCH



Item: MT2739

Description: 1/2" IMPACT WRENCH

Notes: \* RS708A35 Standard Anvil Assembly (incl #31, 31 & 32) \*\* RS78545 Hammer Case Assembly (incl #33, 35 & 36) RSMT2739WL Product Warning Label

Figure No	Part Number	Description	No. Reqd	Warranty Code
1	*K7RS78539M	HOUSING	1	
2	*K7RS78540	TRIGGER	1	
3	*K7RS78503	TRIGGER O-RING (5X2X1.5)	1	
4	K7RS708A46	VALVE SEAT F/MT1712	1	X
5	*K7RS78505	VALVE	1	
6	*K7RS78507	VALVE SPRING	1	
7	*K7RS78508	O-RING (22X17X2.5)	1	
8	*K7RS78541	MUFFLER	1	
9	*K7RS78510	INLET WASHER	1	
10	*K7RS78511	AIR INLET	1	
11	K7RS708A28	FRONT BEARING F/MT1712	1	X
12	*K7RS78546	FRONT END PLATE	1	
13	*K7RS78512	FRONT WASHER	1	
14	*K7RS78520	ROTOR BLADE ( PACK OF 7)	1	
15	*K7RS78516	ROTOR	1	
16	*K7RS78524	CYLINDER	1	
17	*K7RS78532	CYLINDER PIN (4X50)	1	
18	*K7RS78547	REAR END PLATE	1	
19	K7RS708A19	REAR BEARING F/MT1712	1	X
20	*K7RS78521	REAR GASKET	1	
21	*K7RS78522	SWITCH O-RING (43X40X1.5)	2	
22	*K7RS78542	REAR SWITCH	1	
23	K7RS708A06	DETENT BALL F/MT1712	1	X
24	*K7RS78535	DETENT SPRING	1	
25	*K7RS78543	REAR HOUSING CAP	1	
26	*K7RS78529	SCREW	4	
27	*K7RS78530	HAMMER PIN ( PACK OF 2)	1	
28	*K7RS78531	HAMMER CAGE	2	
29	K7RS708A33	HAMMER F/MT1712	1	X
30	*K7*	ANVIL	1	
31	*K7* RS78534	ANVIL O-RING	1	
32	*K7* RS708A36	SOCKET RETAINING RING	1	

33	*K7** RS78536	BUSHING	1
34	*K7RS78544	FRONT GASKET	1
35	*K7**	HAMMER CASE	1
36	*K7** RS78526	GREASE FITTING	1
37	*K7RS78528	REAR WASHER (12)	1
38	*K7RS78539	SWITCH O-RING 2 (*785MT-09)	1