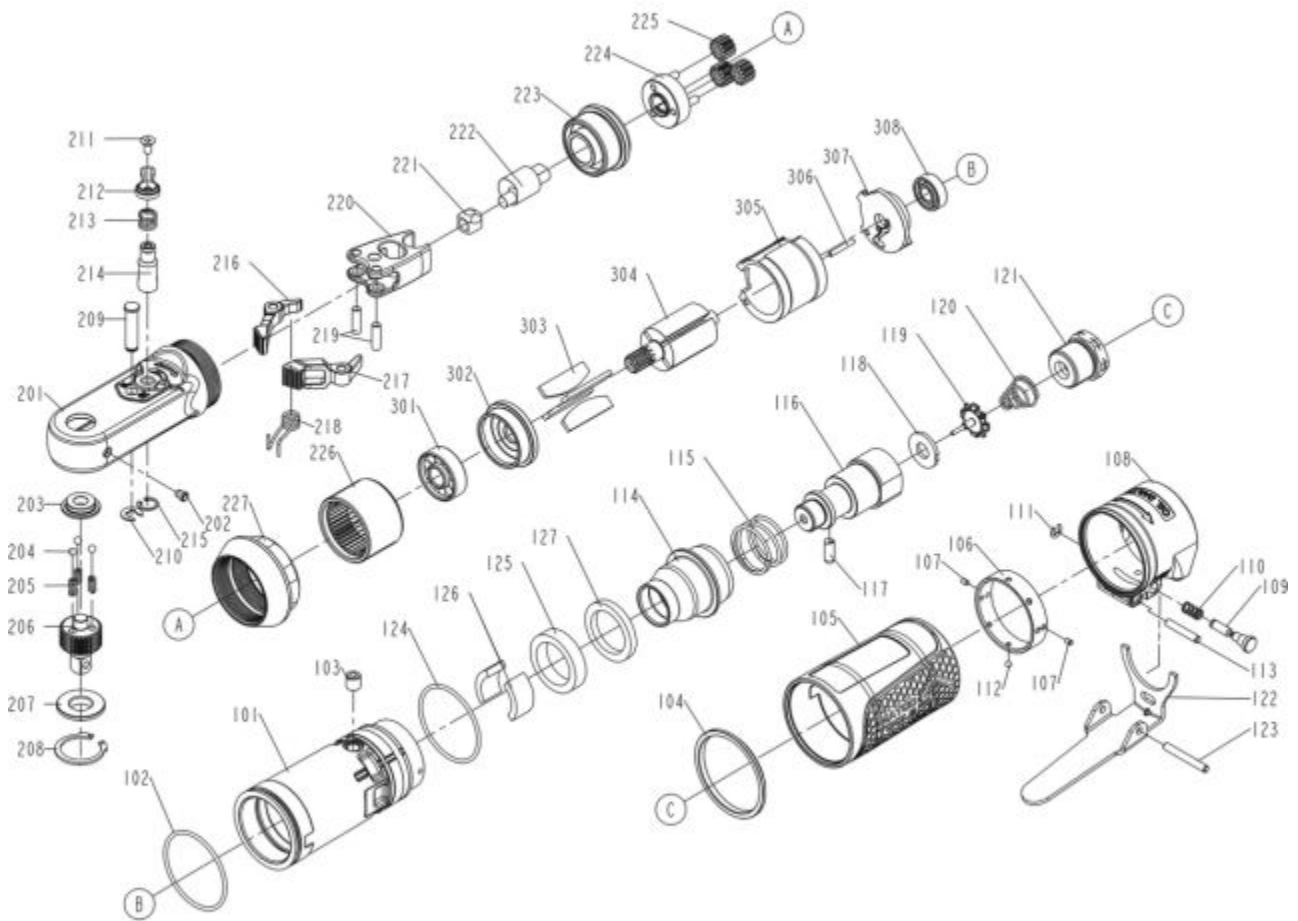


MT2815R - 1/4" SEALED HEAD RATCHET



Item: MT2815R

Description: 1/4" SEALED HEAD RATCHET

Notes: Also Available: * RS10165AK ANVIL KIT (INCLUDES 203 - 208) ** RS10175PSK PAWL AND SPRING KIT (INCLUDES 216-218)

Figure No	Part Number	Description	No. Reqd	Warranty Code
101	*K7RS10145	HOUSING	1	
102	K7RS222313	O RING FOR MT2220	1	X
103	*K7RS10146	HEX.SOC.HD.SCREW	1	
104	*K7RS10147	PACKING	1	
105	*K7RS10148	HANDLE GRIP	1	
106	*K7RS10149	HANGER	1	
107	*K7RS10105	PIN	2	
108	*K7RS10150	TRIGGER BASE	1	
109	*K7RS10151	PIN	1	
110	*K7RS10152	POSITIONING SPRING	1	
111	K7RS4150424	E-RING F/MT2138	1	X
112	K7RS1735313	BALL	1	X
113	K7RS1837109	SPRING PIN	1	X
114	*K7RS10153	PLUNGER	1	
115	*K7RS10154	SPRING	1	
116	*K7RS10155	SPECIAL SCREW	1	
117	*K7RS10156	VALVE STEM	1	
118	*K7RS1023206	SEAL	1	
119	*K7RS10157	TIP VALVE	1	
120	*K7RS1023208	CONICAL SPRING	1	
121	*K7RS10158	AIR INLET	1	
122	K7RS10159	TRIGGER F/MT2815R	1	X
123	K7RS7500104	SPRING PIN F/MT2815R	1	X
124	*K7RS2638315	O - RING	1	
125	*K7RS10160	MUFFLER	1	
126	*K7RS10161	MUFFLER A	2	
127	*K7RS10162	WASHER	1	
201	*K7RS10163	RATCHET HOUSING	1	
202	K7RS1837220	HAMMER CASE GR FITTING MT2138	1	X
203	*K7*	COLLAR	1	
204	*K7*	STEEL BALL	3	
205	*K7*	THRUST WASHER SPRING	3	

206	*K7*	ANVIL ASSEMBLY	1	
207	*K7*	ANVIL-WASHER	1	
208	*K7*	IN-CONCENTRIC RING	1	
209	*K7RS10168	PIN	1	
210	*K7RS10169	E - RING	1	
211	K7RS10170	COUNTER SUNK SCREW MT2815R	1	X
212	K7RS10171	LEVER MT2815R	1	X
213	*K7RS10172	SPRING	1	
214	*K7RS10173	REVERSE VALVE	1	
215	*K7RS10174	C - RING	1	
216	*K7**	PAWL	1	
217	*K7**	PAWL A	1	
218	*K7**RS10177	SPRING	1	
219	*K7RS10178	PAWL PINS	2	
220	*K7RS10179	YOKE	1	
221	K7RS1837213	BUSHING F/ MT1837S	1	X
222	*K7RS10180	MOTOR SHAFT BALANCER	1	
223	*K7RS10181	CONNECTING COLLAR	1	
224	*K7RS10182	PLANET CAGE	1	
225	K7RS1837218	GEAR F/MT1837S	3	X
226	*K7RS10183	INTERNAL GEAR	1	
227	*K7RS10184	LOCK RING KEY	1	
301	K7RS222307	BEARING FOR MT2220	1	X
302	*K7RS10185	FRONT BEARING PLATE	1	
303	*K7RS10186	BLADES (PACK OF 4)	1	
304	*K7RS10187	ROTOR	1	
305	*K7RS10188	CYLINDER	1	
306	K7RS1734413	SPRING PIN F/MT1734	1	X
307	*K7RS10189	REAR END PLATE	1	