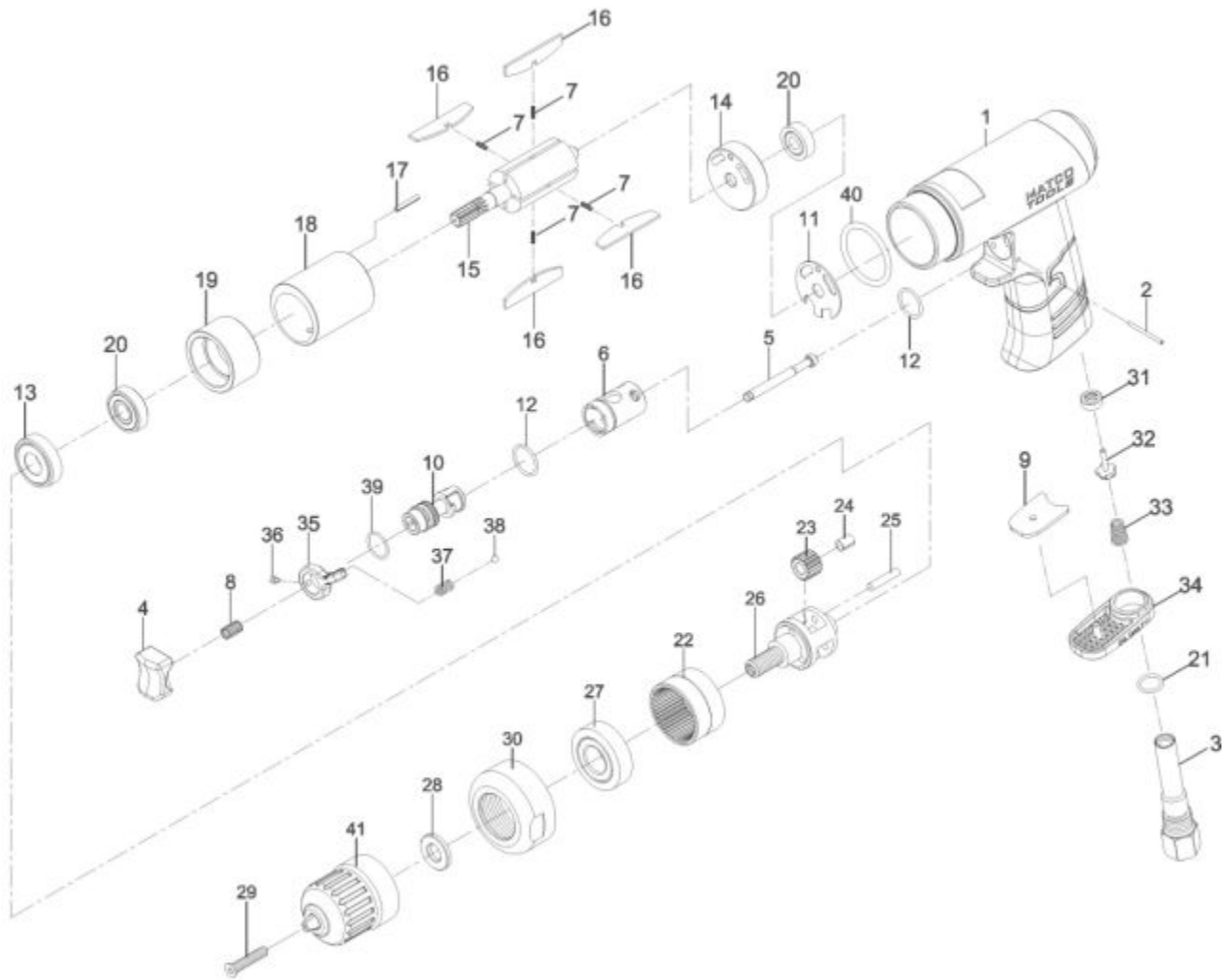


MT2889 - 3/8" COMPOSITE DRILL



Item: MT2889

Description: 3/8" COMPOSITE DRILL

Notes: N/A

| Figure No | Part Number | Description | No. Reqd | Warranty Code |
|-----------|--------------|-------------------------------------|----------|---------------|
| 1 | RS282701 | COMP. MOTOR HOUSING | 1 | X |
| 2 | RS282702 | PIN | 1 | X |
| 3 | K7RS282703 | AIR INLET F/MT2889 | 1 | X |
| 4 | K7RS282704 | TRIGGER F/MT2889 | 1 | X |
| 5 | K7RS282705 | VALVE STEM F/MT2889 | 1 | X |
| 6 | RS282706 | REVERSE BUSHING | 1 | X |
| 7 | *K7- | SPRING (INLUDED WITH #16) | 4 | |
| 8 | K7RS79408N | VALVE SPRING - REV. AIR DRILL | 1 | X |
| 9 | RS282709 | MUFFLER | 2 | X |
| 10 | K7RS282710 | REVERSE VALVE F/MT2889 | 1 | X |
| 11 | RS282711 | MOTOR GASKET | 1 | X |
| 12 | K7RS24009 | ORING F/MT2889 | 1 | X |
| 13 | K7RS227B25 | BALL BEARING MT1430,MT1450,60 | 1 | X |
| 14 | RS282714 | REAR END PLATE | 1 | X |
| 15 | K7RS188915 | ROTOR FOR MT1889 | 1 | X |
| 16 | *K7RS1827165 | ROTOR BLADES (SET OF 4, INLUDED #7) | 1 | |
| 17 | RS282717 | SPRING PIN | 1 | X |
| 18 | K7RS182718 | CYLINDER F/MT1827 | 1 | X |
| 19 | K7RS188919 | FRONT END CAP F/MT1889 | 1 | X |
| 20 | K7RS108A12 | BEARING FOR RL838 | 2 | X |
| 21 | K7RS76209 | O-RING F/MT2889 | 1 | X |
| 22 | K7RS188922 | INTERNAL GEAR FOR MT1889 | 1 | X |
| 23 | K7RS188923 | PLANET GEAR W/BEARING F/MT1889 | 3 | X |
| 24 | *K7- | OILLESS BEARING (INCLUDED IN #23) | 3 | |
| 25 | K7RS182725 | PIN F/MT1827 | 3 | X |
| 26 | K7RS188926 | SPINDLE F/MT1889 | 1 | X |
| 27 | K7RS21109 | BEARING F/MT1889 | 1 | X |
| 28 | K7RS182729 | WASHER F/MT1889 | 1 | X |
| 29 | K7RS288929 | CHUCK SCREW F/ MT2889 | 1 | X |
| 30 | K7RS182732 | CLAMP NUT F/MT1889 | 1 | X |
| 31 | K7RS24050 | VALVE SEAT FOR MT2889 | 1 | X |
| 32 | K7RS24051 | VALVE F/MT2889 | 1 | X |
| 33 | K7RS24052 | SPRING FOR MT2889 | 1 | X |

| | | | | |
|----|-------------|----------------------|---|---|
| 34 | RS282737 | EXHAUST DIFFUSER | 1 | X |
| 35 | *K7RS283742 | REVERSE LEVER | 1 | |
| 36 | K7RS24036 | SET SCREW FOR MT2889 | 1 | X |
| 37 | *K7RS24029 | SPRING | 1 | |
| 38 | K7RS24030 | STEEL BALL F/MT2889 | 1 | X |
| 39 | K7RS24023 | ORING F/MT2889 | 1 | X |
| 40 | RS282748 | DECORATION RING | 1 | X |
| 41 | FX30354 | 3/8 KEYLESS CHUCK | 1 | K |