

36W SMD

Rechargeable Site Lamp

Multi-mode super bright
36W 72 SMD site lamp



Light Output

Single button controlled high quality output in multiple modes

| | HIGH INTENSITY | MEDIUM INTENSITY | LOW INTENSITY |
|----------|----------------|------------------|---------------|
| LUMEN | 3000 | 1500 | 750 |
| RUN TIME | 1.5 hours | 2.5 hours | 5 hours |

STURDY CONSTRUCTION

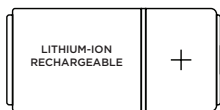
- Protected against dust and effects of low pressure water jets from any direction
- Corrosion resistant aluminium die cast construction in premium powder coated finish
- Impact proof ABS frame
- Tempered glass lens
- Steel handle with foam grip for comfort in use
- Sturdy steel stand for balance positioning in the toughest of job site conditions

PATENTED DESIGN

Unique & innovative 360° swivel & tilt mechanism. Stainless steel ball joint mechanism allows

- Swivelling to full 360°
- Tilt

POWER SOURCE



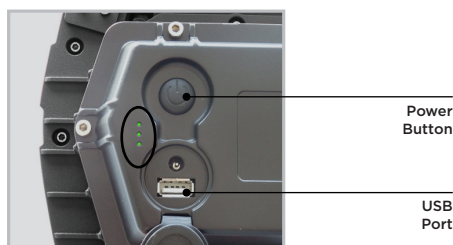
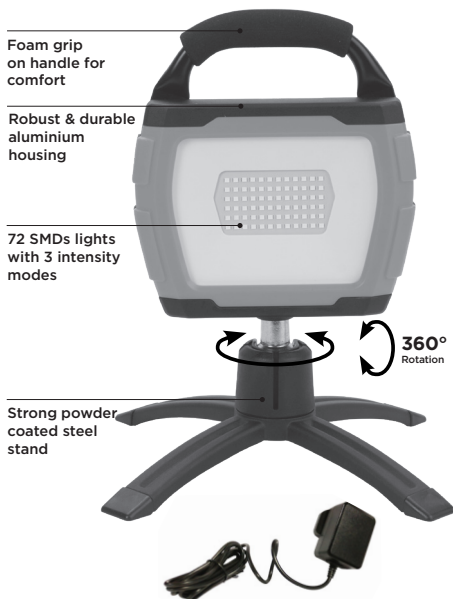
RECHARGEABLE BATTERY
7.4V 4400 mAh

CHARGING OF BATTERY

Battery can be recharged using dual voltage AC 100V-240V AC charger, provided with the light

Charge Time

4.5 hours



3 LED battery level indicator
5V 2.1 Amp USB output port for use as powerbank

| SIZE (LxHxD) | |
|------------------|-----------------|
| (INCH) | (MM) |
| 8.7 x 8.7 x 12.2 | 223 x 223 x 309 |

| WATER & DUST PROOF RATING | OPERATING TEMPERATURE |
|---------------------------|-----------------------------------|
| IP65 | -10°C TO 40°C (-14°F TO 104°F) |

SAFETY INFORMATION

- Follow workshop health & safety rules, regulations and conditions when using the rechargeable site lamp.
- When not in use, rechargeable site lamp should be stored in a dry location to inhibit rust.
- During their period of use, accessories must be checked for wear, cracks and other damage, replace any damaged or worn parts.
- Use genuine parts only. Unauthorized parts may be dangerous and will void the warranty.
- Keep the rechargeable site lamp clean and in good working order for best and safest performance.
- DO NOT use the lamp in the immediate vicinity of inflammable materials or gases.
- DO NOT point the light directly in your own or any other person's or animal's eyes.
- DO NOT pull the charger plug from the mains socket by the lead.
- DO NOT drop, throw or abuse the rechargeable site lamp.

WARNING!

- DO NOT use any other type of charger with this product, other than the supplied mains or car charger. Failure to observe this warning could result in injury and or fire and will void the warranty.

PACKAGING CONTENT

| DESCRIPTION | QTY. |
|------------------------|------|
| Rechargeable site lamp | 1 |
| Universal AC Adaptor | 1 |
| O.I.P.M. | 1 |

BEFORE INSTALLATION

- **Eyes protection:** Wear a protective mask or protective eyewear.
- Check that the product has not suffered any damage during transport or storage. Clean and remove any dust or residual packing material.
- Read the instructions carefully before using rechargeable site lamp and keep them for further reference.

WARNING!

- Defective accessories can lead to personal injury and material damage.

INSTALLATION

Refer "EXPLODED VIEW"

1. Place the site lamp on a plane surface and open the charging socket cover (11) located on the rear of the light just below the switch (8).
2. Connect charging lead to the socket in the back of light. Connect charger to power supply, switch on power supply. The battery will begin charging, full charge will be reached in approx. 4.5hrs.

3. The three LED lights near the charging socket cover (11) shows the state of charge of the battery while charging.
4. When the battery is fully charged, remove the charger and close the charging socket cover (11). (A USB port is also position next to the charging connection so that the battery can be used as a power bank.)

CAUTION!

- Use only the supplied charger plug for connecting lamp to the power supply.
- DO NOT turn the lamp on when it is being charged.
- DO NOT attempt to open, disassemble, modify or service the battery pack.
- DO NOT expose rechargeable site lamp to temperatures above 60°C (140°F).
- DO NOT use the lamp if you suspect that the battery or the lamp casing is damaged.
- DO NOT leave battery in a discharged state, recharge battery immediately. Before storage, fully recharge the battery, subsequently recharge the battery at least once every six months of non-use.

OPERATING INSTALLATION

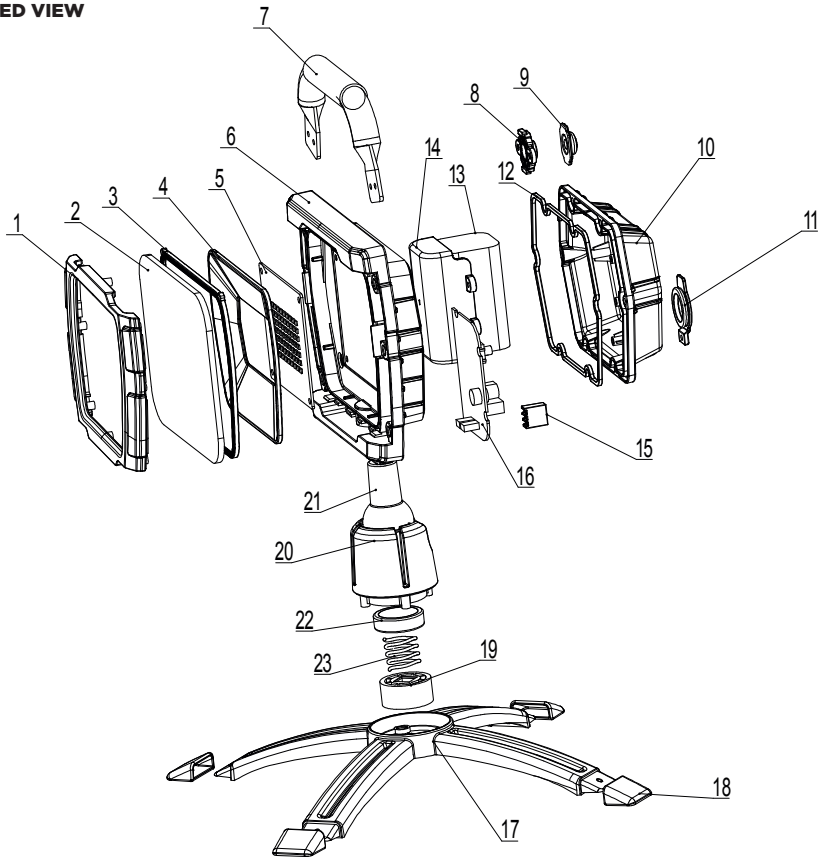
(Refer "EXPLODED VIEW")

1. Press the switch (8) once for low, twice for medium and three times for high lumens output.
2. The site lamp can swivel through 360° and be tilted

MAINTENANCE

- Recharge the battery immediately when discharged.
- Before storage, fully recharge the battery, subsequently recharge the battery at least once every six months of non-use.
- When not in use, rechargeable site lamp should be stored in a dry location.

EXPLODED VIEW



PART LIST

| REF NO. | DESCRIPTION | QTY. |
|---------|-----------------------|------|
| 1 | Front housing | 1 |
| 2 | Tempered glass | 1 |
| 3 | Sealing ring | 1 |
| 4 | Plastic Reflector | 1 |
| 5 | 72 LED PCB | 1 |
| 6 | Mains housing | 1 |
| 7 | Handle | 1 |
| 8 | Switch | 1 |
| 9 | Switch cap | 1 |
| 10 | Back housing | 1 |
| 11 | Charging socket cover | 1 |
| 12 | Waterproof ring | 1 |

| REF NO. | DESCRIPTION | QTY. |
|---------|------------------------------|------|
| 13 | 7.4v (4400 mAh) battery pack | 1 |
| 14 | Battery cover | 1 |
| 15 | Indicator support | 1 |
| 16 | PCB | 1 |
| 17 | "X" stand | 1 |
| 18 | Rubber cap | 4 |
| 19 | Bottom Ball solid board | 1 |
| 20 | Rotating support | 1 |
| 21 | Pivot | 1 |
| 22 | Ball middle solid board | 1 |
| 23 | Wave spring | 1 |

TROUBLE SHOOTING

| PROBLEM | POSSIBLE CAUSE | CORRECTIVE ACTION |
|---|-----------------------|---|
| The rechargeable site lamp has low lumen output or does not work. | Low battery | Recharge the battery |
| If the rechargeable site lamp still doesn't work | | Contact nearest authorized service dealer |

DISPOSAL

The components or the used products must be given to companies that specialize in the disposal and recycling of industrial waste.