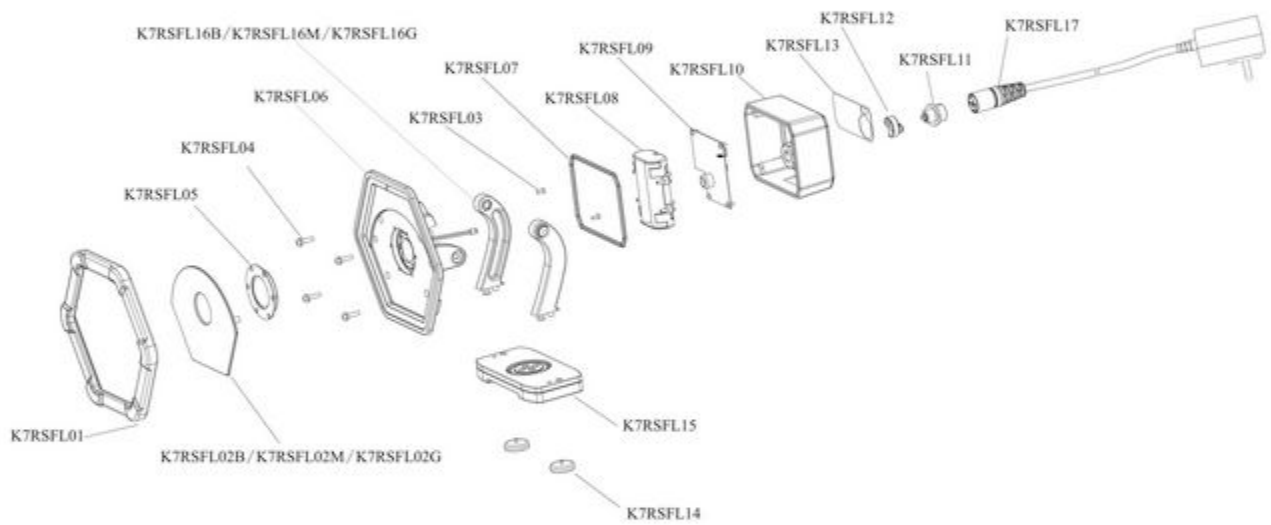


MWLFLG2 - FLOOD LIGHT - GREEN



Item: MWLFLG2

Description: FLOOD LIGHT - GREEN

Notes: Sliding Bracket for use in UH: MWLBRK - UH Bar: MWLUHBAR

| Figure No | Part Number | Description | No. Reqd | Warranty Code |
|-----------|-------------|---|----------|---------------|
| 1 | *K7RSFL01 | PROTECTIVE SILICON RUBBER BUMPER - BLACK | 1 | |
| 2 | *K7RSFL02G | FRONT PLASTIC FACE PLATE - GREEN | 1 | |
| 2 | *K7RSFL02M | FRONT PLASTIC FACE PLATE - ORANGE | 1 | |
| 3 | *K7RSFL03 | FLAT HEAD SREW, #2 PHILLIPS, M3X1MM, 5.7MM THREADED LENGTH, 7.7MM TOTAL LENGTH, 5.2 IN-LBS - PACK OF 2 | 1 | |
| 4 | *K7RSFL04 | ROUND HEAD SCREW, #2 PHILLIPS, M4X1.6MM, 25MM THREADED LENGTH, 27.4MM TOTAL LENGTH, 10.4 IN-LBS, 8MM OD, 4.4MM ID, 1.8MM THICK - PACK OF 4 | 1 | |
| 5 | *K7RSFL05 | LENS ASSEMBLY: LENS, RUBBER HOLDER, GASKET, LENS STEEL PLATE, QTY 6 OF FLAT HEAD SREW, #1 PHILLIPS, M2.5X0.45MM, 6MM THREADED LENGTH, 7.2MM TOTAL LENGTH, 5.2 IN-LBS | 1 | |
| 6 | *K7RSFL06 | COMBINED ALUMINUM MAIN HOUSING BODY WITH ASSEMBLED COB LED, WIRES WITH MALE CONNECTOR | 1 | |
| 7 | *K7RSFL07 | GASKET FOR REAR COVER TO MAIN ALUMINUM HOUSING BODY | 1 | |
| 8 | *K7RSFL08 | BATTERY ASSEMBLY: PLASTIC HOLDER OF THE BATTERY, LITHIUM ION REPLACEMENT BATTERY WITH WIRES AND MALE CONNECTOR, QTY 4 OF ROUND HEAD SCREW, #2 PHILLIPS, M3X0.5MM, 8MM THREADED LENGTH, 9.8MM TOTAL LENGTH, 3.5 IN-LBS | 1 | |
| 9 | *K7RSFL09 | PCB ASSEMBLY: PRINTED CIRCUIT BOARD FOR GEN 2 LIGHT WITH THREE FEMALE CONNECTORS (PCB), QTY 4 OF FLAT HEAD SREW, #2 PHILLIPS, M3X1MM, 3.7MM THREADED LENGTH, 5.8MM TOTAL LENGTH, 2.6 IN-LBS | 1 | |
| 10 | *K7RSFL10 | REAR HOUSING WITH OVERMOLDED TPR COVER AND PORT COVER RIVET POST | 1 | |
| 11 | *K7RSFL11 | PORT ASSEMBLY: STEEL CHARGING PORT WITH WIRES AND MALE CONNECTOR, 18.8MM OD, 15.2MM ID, 1.8MM THICK, JAM NUT, M14X1.5MM, 19MM WIDTHS, 3MM THICK | 1 | |
| 12 | *K7RSFL12 | RUBBER COVER FOR PORT, NOT NEEDED FOR WATER/DUST PROTECTION | 1 | |
| 13 | *K7RSFL13 | LABEL FOR REAR HOUSING, STATING IT IS A REPAIRED LIGHT | 1 | |
| 14 | *K7RSFL14 | PACK OF 2, MAGNET ASSEMBLY: MAGNET IN STEEL MAGNET HOLDER, FLAT HEAD SREW, #1 PHILLIPS, M3X0.5MM, 8MM THREADED LENGTH, 10MM TOTAL LENGTH, 12.2 IN-LBS | 1 | |
| 15 | *K7RSFL15 | SWIVEL BASE ASSEMBLY: PIECES TOP, MIDDLE, BOTTOM + K7RSFL14 + QTY 4 OF FLAT HEAD SREW, #2 PHILLIPS, M3X1MM, 3.3MM THREADED LENGTH, 5.8MM TOTAL LENGTH, 5.2 IN-LBS | 1 | |
| 16 | *K7RSFL16G | SWIVEL ARMS - GREEN: LEFT, RIGHT, 2X EACH OF 17.4 IN-LBS: LOCK NUT, M6X1MM, 9.7MM WIDTHS, 5.9MM THICKNESS; ROUND 4MM HEX HEAD BOLT, M6X1MM, 14MM THREADED LENGTH, 17MM TOTAL LENGTH: MODIFIED SOCKET 2MM HEX CAP BOLT, M4X0.7MM, 12MM | 1 | |

THREADED L, 13.4MM TOTAL L: RUBBER CONICAL WASHER, 12.7MM OD, 5MM ID, 1MM THICKNESS; RUBBER CONICAL WASHER, 14.8MM OD, 6.3MM ID, 1.9MM THICKNESS

- | | | | |
|----|------------|---|---|
| 16 | *K7RSFL16M | SWIVEL ARMS - ORANGE: LEFT, RIGHT, 2X EACH OF 17.4 IN-LBS: LOCK NUT, M6X1MM, 9.7MM WIDTHS, 5.9MM THICKNESS; ROUND 4MM HEX HEAD BOLT, M6X1MM, 14MM THREADED LENGTH, 17MM TOTAL LENGTH: MODIFIED SOCKET 2MM HEX CAP BOLT, M4X0.7MM, 12MM THREADED L, 13.4MM TOTAL L: RUBBER CONICAL WASHER, 12.7MM OD, 5MM ID, 1MM THICKNESS; RUBBER CONICAL WASHER, 14.8MM OD, 6.3MM ID, 1.9MM THICKNESS | 1 |
| 17 | *K7RSFL17 | CHARGER ADAPTOR WITH 16 FOOT CORD AND MALE QUICK RELEASE CONNECTOR | 1 |