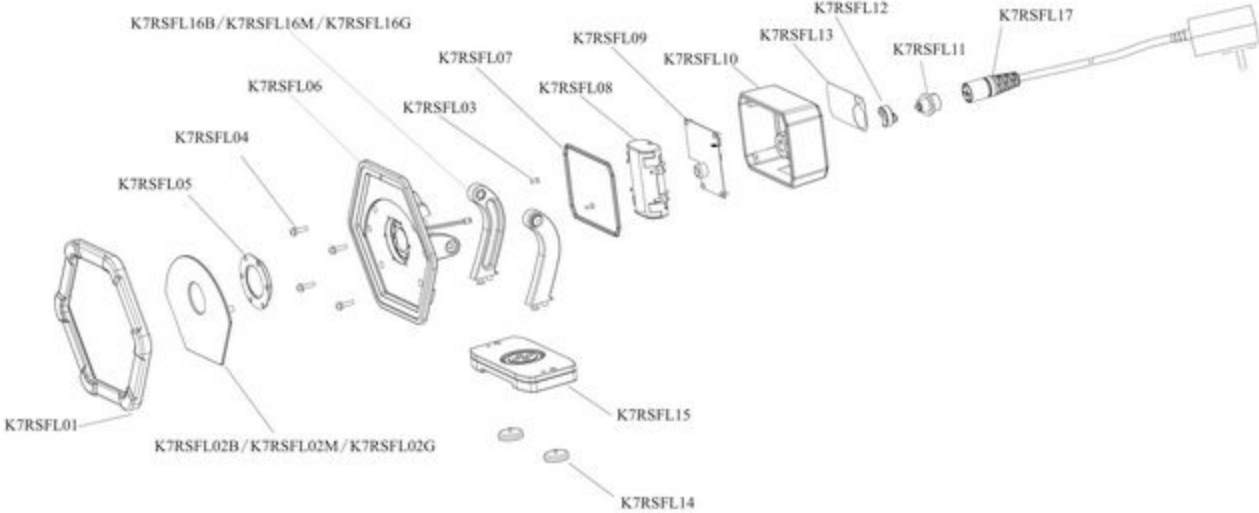


MWLUHFLM2 - UNDERHOOD FLOOD LIGHT ORANGE



Item: MWLUHFLM2

Description: UNDERHOOD FLOOD LIGHT ORANGE

Notes: The MWLUHFLM2 has a D warranty be is changed to an M warranty to promote part replacement rather warranty of the entire tool when only a part id defective. If the main body of the light is defective contact the supplier at 866-496-8423 option 2. Sliding Bracket for use in UH: MWLBRK - UH Bar: MWLUHBAR

Figure No	Part Number	Description	No. Reqd	Warranty Code
1	*K7RSFL01	PROTECTIVE SILICON RUBBER BUMPER - BLACK	1	
2	*K7RSFL02G	FRONT PLASTIC FACE PLATE - GREEN	1	
2	*K7RSFL02M	FRONT PLASTIC FACE PLATE - ORANGE	1	
3	*K7RSFL03	FLAT HEAD SREW, #2 PHILLIPS, M3X1MM, 5.7MM THREADED LENGTH, 7.7MM TOTAL LENGTH, 5.2 IN-LBS - PACK OF 2	1	
4	*K7RSFL04	ROUND HEAD SCREW, #2 PHILLIPS, M4X1.6MM, 25MM THREADED LENGTH, 27.4MM TOTAL LENGTH, 10.4 IN-LBS, 8MM OD, 4.4MM ID, 1.8MM THICK - PACK OF 4	1	
5	*K7RSFL05	LENS ASSEMBLY: LENS, RUBBER HOLDER, GASKET, LENS STEEL PLATE, QTY 6 OF FLAT HEAD SREW, #1 PHILLIPS, M2.5X0.45MM, 6MM THREADED LENGTH, 7.2MM TOTAL LENGTH, 5.2 IN-LBS	1	
6	*K7RSFL06	COMBINED ALUMINUM MAIN HOUSING BODY WITH ASSEMBLED COB LED, WIRES WITH MALE CONNECTOR	1	
7	*K7RSFL07	GASKET FOR REAR COVER TO MAIN ALUMINUM HOUSING BODY	1	
8	*K7RSFL08	BATTERY ASSEMBLY: PLASTIC HOLDER OF THE BATTERY, LITHIUM ION REPLACEMENT BATTERY WITH WIRES AND MALE CONNECTOR, QTY 4 OF ROUND HEAD SCREW, #2 PHILLIPS, M3X0.5MM, 8MM THREADED LENGTH, 9.8MM TOTAL LENGTH, 3.5 IN-LBS	1	
9	*K7RSFL09	PCB ASSEMBLY: PRINTED CIRCUIT BOARD FOR GEN 2 LIGHT WITH THREE FEMALE CONNECTORS (PCB), QTY 4 OF FLAT HEAD SREW, #2 PHILLIPS, M3X1MM, 3.7MM THREADED LENGTH, 5.8MM TOTAL LENGTH, 2.6 IN-LBS	1	
10	*K7RSFL10	REAR HOUSING WITH OVERMOLDED TPR COVER AND PORT COVER RIVET POST	1	
11	*K7RSFL11	PORT ASSEMBLY: STEEL CHARGING PORT WITH WIRES AND MALE CONNECTOR, 18.8MM OD, 15.2MM ID, 1.8MM THICK, JAM NUT, M14X1.5MM, 19MM WIDTHS, 3MM THICK	1	
12	*K7RSFL12	RUBBER COVER FOR PORT, NOT NEEDED FOR WATER/DUST PROTECTION	1	
13	*K7RSFL13	LABEL FOR REAR HOUSING, STATING IT IS A REPAIRED LIGHT	1	
14	*K7RSFL14	PACK OF 2, MAGNET ASSEMBLY: MAGNET IN STEEL MAGNET HOLDER, FLAT HEAD SREW, #1 PHILLIPS, M3X0.5MM, 8MM THREADED LENGTH, 10MM TOTAL LENGTH, 12.2 IN-LBS	1	
15	*K7RSFL15	SWIVEL BASE ASSEMBLY: PIECES TOP, MIDDLE, BOTTOM + K7RSFL14 + QTY 4 OF FLAT HEAD SREW, #2 PHILLIPS, M3X1MM, 3.3MM THREADED LENGTH, 5.8MM TOTAL LENGTH, 5.2 IN-LBS	1	
16	*K7RSFL16G	SWIVEL ARMS - GREEN: LEFT, RIGHT, 2X EACH OF 17.4 IN-LBS: LOCK NUT, M6X1MM, 9.7MM WIDTHS, 5.9MM THICKNESS; ROUND 4MM HEX HEAD BOLT, M6X1MM, 14MM THREADED LENGTH, 17MM TOTAL LENGTH: MODIFIED SOCKET 2MM HEX CAP BOLT, M4X0.7MM, 12MM	1	

THREADED L, 13.4MM TOTAL L: RUBBER CONICAL WASHER, 12.7MM OD, 5MM ID, 1MM THICKNESS; RUBBER CONICAL WASHER, 14.8MM OD, 6.3MM ID, 1.9MM THICKNESS

16	*K7RSFL16M	SWIVEL ARMS - ORANGE: LEFT, RIGHT, 2X EACH OF 17.4 IN-LBS: LOCK NUT, M6X1MM, 9.7MM WIDTHS, 5.9MM THICKNESS; ROUND 4MM HEX HEAD BOLT, M6X1MM, 14MM THREADED LENGTH, 17MM TOTAL LENGTH: MODIFIED SOCKET 2MM HEX CAP BOLT, M4X0.7MM, 12MM THREADED L, 13.4MM TOTAL L: RUBBER CONICAL WASHER, 12.7MM OD, 5MM ID, 1MM THICKNESS; RUBBER CONICAL WASHER, 14.8MM OD, 6.3MM ID, 1.9MM THICKNESS	1	
17	*K7RSFL17	CHARGER ADAPTOR WITH 16 FOOT CORD AND MALE QUICK RELEASE CONNECTOR	1	
18	MWLBRK	WORK LIGHT ADAPT BRACKET	1	D
19	MWLUHBAR	UNDERHOOD WORKLIGHT BAR	1	D