

## Q3TJ1000A - 1000LB TELESCOPIC TRANS JACK

Replacement Parts Illustration for Model T.J1000A Series A:

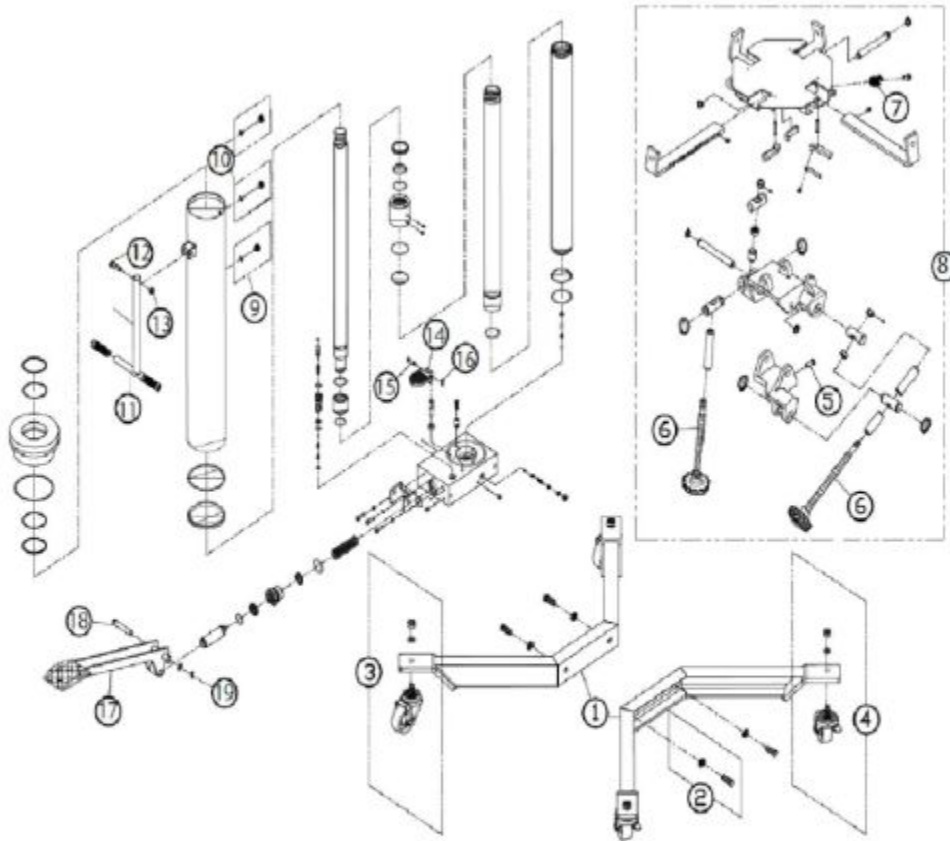


Figure 2 - Replacement Parts Illustration for Model T.J1000A Series A

Item: Q3TJ1000A

Description: 1000LB TELESCOPIC TRANS JACK

Notes: THIS BREAKDOWN IS FOR THE TJ1000A A SERIES. THE SERIAL NUMBER SHOULD START WITH "SS".  
Q3G360330000 - tilt screw for units made post 2012.

Figure No	Part Number	Description	No. Reqd	Warranty Code
1	Q3G360200000	BASE HALF F/ TJ1000A	2	B
2	Q36090030K04	BOLT SET (SET OF 4)	1	L
3	Q3G36090030K	CASTER 3" NON BRAKE F/TJ1000A	2	B
4	Q3G3609003K1	CASTER W/BRAKE F/TJ1000A	2	B
5	*Q35105-08015-000	SOCKET HEAD BOLT	1	
6	Q3G360330000	TILT SCREW F/TJ1000A	2	D
7	Q3G390410000	NYLON STRAP ASSY F/TJ1000A	1	B
8	Q3G360400000	TOP JACK ASSY FOR Q3TJ1000A	1	B
9	*Q3a070-90038-k02	SCREW ASSEMBLY	1	
10	Q336090009K0	VENT SCREW F/TJ1000A	1	B
11	Q3G360900303	HANDLE ASSY F/TJ1000A	1	B
12	Q30410040000	BOLT	1	X
13	Q35206000010	M10 NUT FOR JACK 21032	1	B
14	Q39010005000	RELEASE VALVE PEDAL	1	X
15	Q35405070270	PIN F/TJ1000A	1	B
16	Q30502018000	SNAP PIN	1	B
17	Q3G390300000	LIFT PEDAL F/TJ1000A	1	B
18	Q35405120700	AXLE F/TJ1000A SERIES A	1	B
19	Q35405020280	RETAINING PIN F/TJ1000A SER A	1	B
20	Q3G3601S-111	SEAL KIT F/TJ1000A TRANS JACK	1	B