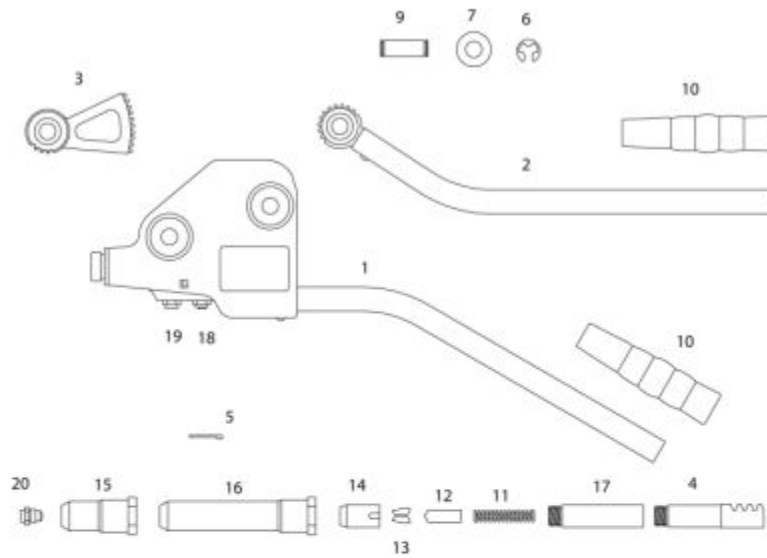


## RG390 - BIG DADDY RIVETER

### Big Daddy®/39010/39031/39035



REF.	PART No.	DESCRIPTION	QTY./ASSY.
1	96001	TOOL HOUSING & LOWER HANDLE	1
2	96002	UPPER HANDLE ASSEMBLY	1
3	96003	GEAR SELECTOR	1
4	96004	GEAR RACK	1
5	96005	RACK BEARING PLATE	1
6	96006	RETAINING RING	4
7	96007	PIVOT PIN WASHER	4
9	96009	PIVOT PIN	2
10	96010	HANDLE GRIP	2
11	96011	JAW PUSHER SPRING	1
12	96012	JAW PUSHER	1
13	96013	JAW (2 PIECES)	1
14	96014	COLLET	1
15	96015	HEAD 2 5/16" (58mm)	1
16	39115* 39009	HEAD EXT. 4 13/16" (121mm)	1
17	39116* KIT	COLLET EXT.	1
18	96028***	NOSEPIECE FOR 1/4" KLIK-SPLIT® RIVETS	1
NOT SHOWN	96024	NOSEPIECE FOR 1/8" RIVETS	OPTIONAL
NOT SHOWN	96025**	NOSEPIECE FOR 5/32" RIVETS	1
19	96026	NOSEPIECE FOR 3/16" RIVETS	1
20	96027	NOSEPIECE FOR 1/4" RIVETS	1
NOT SHOWN	96030	NOSEPIECE FOR 1/4" MONOBOLT®	OPTIONAL
NOT SHOWN	96031	NOSEPIECE FOR 3/16" MONOBOLT®	OPTIONAL

\* INCLUDED IN 39035 TOOL.  
 \*\* INCLUDED IN 39031 TOOL.  
 \*\*\* INCLUDED IN 39010 & 39035 TOOLS

Item: RG390

Description: BIG DADDY RIVETER

**Notes:** To install 39009 Extended Nose Piece: Remove head (15), collet (14), jaws (13), jaw pusher (12) and spring (11). Screw collet extension from kit onto gear rack (4). Insert spring (11) back into collet extension. Insert jaws (13) and jaw pusher (12) into collet (14) and screw assembly on the new collet extension. Screw new extension head with proper nose piece back on tool.

Figure No	Part Number	Description	No. Reqd	Warranty Code
0	RG39009	NOSE PIECE FOR RG390	1	T
0	JH96025	5/32 NOSE PIECE F/RG390	1	X
0	JH96024	1/8 IN NOSE PIECE F/RG390	1	X
1	JH96001	TOOL HSG.&LOWER HDL.F/RG390	1	X
2	JH96002	UPPER HANDLE F/RG390	1	X
3	JH96003	GEAR SECTOR F/RG390	1	X
4	JH96004	GEAR RACKING	1	X
5	JH96005	BEARING PLATE	1	X
6	JH96006	RETAINING RING F/RG390	4	X
7	JH96007	PIVOT PIN WASHER F/RG390	4	X
8	JH96008	BEARING	4	X
9	JH96009	PIVOT PIN F/RG390	2	X
10	JH96010	HANDLE GRIPS	2	X
11	JH96011	JAW PUSHER SPRING F/RG390	1	X
12	JH96012	JAW PUSHER F/RG390	1	X
13	JH96013	JAWS F/RG390	1	X
14	JH96014	COLLET F/RG390	1	X
15	JH96015	HEAD ONLY - RG390	1	X
18	JH96028	1/4 KLIK-SPLIT NSPC F/RG390	1	X
19	JH96026	3/16 IN NOSEPIECE F/RG390	1	X
20	JH96027	1/4 IN NOSE PIECE F/RG390	1	X