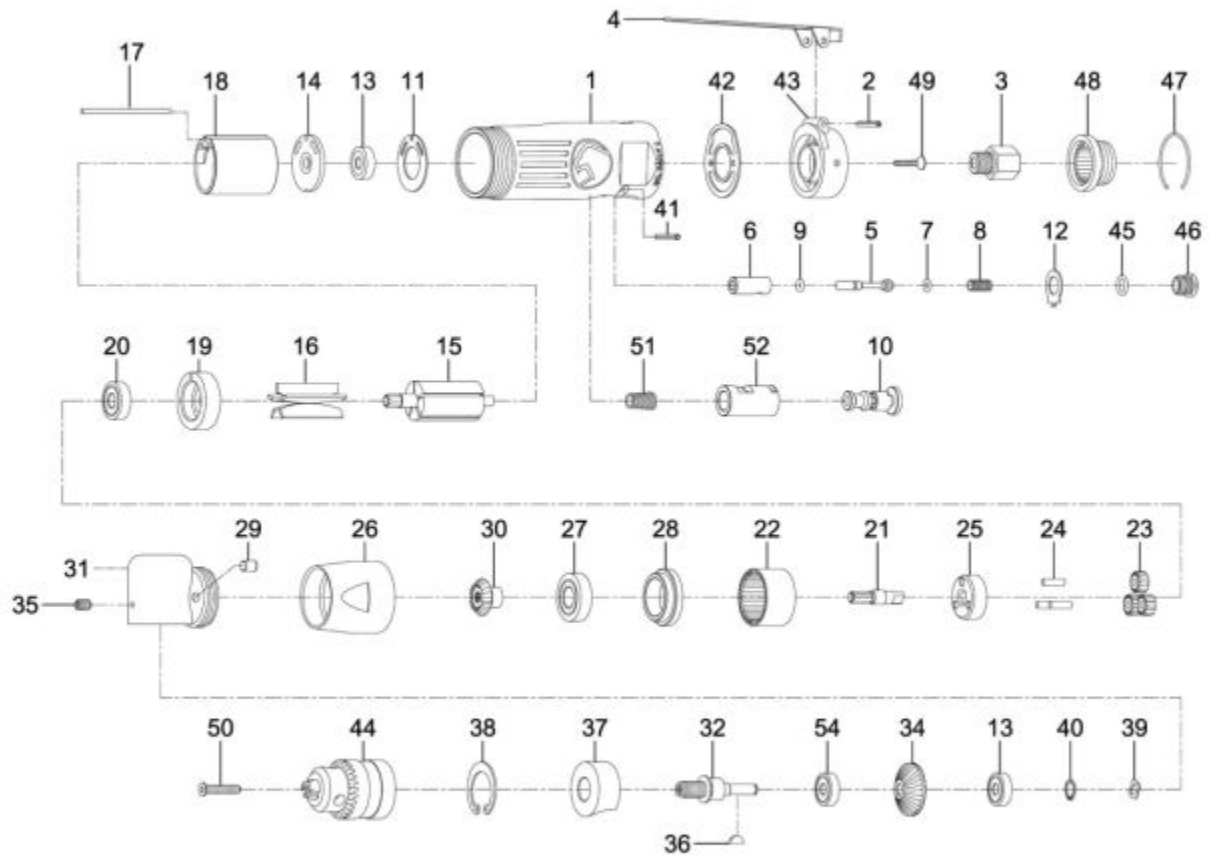


## SE137 - 3/8" REVERSIBLE ANGLE DRILL



Item: SE137

Description: 3/8" REVERSIBLE ANGLE DRILL

Notes: Also available: RS87106KK Key Only For 3/8" Jacobs ® Chuck RSSE137WL Product/Warning Label

Figure No	Part Number	Description	No. Reqd	Warranty Code
1	K7RS78701SE	MOTOR HOUSING F/ SE137	1	X
2	K7RS233A02	SPRING PIN F/MT1810	1	X
3	K7RS233A03	AIR INLET F/SX233A,MT1810	1	X
4	K7RS78704M	THROTTLE LEVER	1	X
5	K7RS78705	VALVE STEM F/MT1810	1	X
6	K7RS78706	VALVE F/MT1810	1	X
7	K7RS78707	O RING F/6-787	1	X
8	K7RS78708	SPRING	1	X
9	K7RS78709	O RING	1	X
10	K7RS78710	REVERSE BUTTON F/MT1810	1	X
11	K7RS79511	MOTOR GASKET F/ RL138	1	X
12	K7RS78712	REVERSE RETAINER	1	X
13	K721114	BEARING F/RL600	2	X
14	K7RS79514	END PLATE F/MT1810	1	X
15	K7RS78715	ROTOR F/MT1810	1	X
16	K7RS78716	ROTOR BLADE F/MT1810	5	X
17	K7RS78717	PIN F/MT1810	2	X
18	K7RS78718	CYLINDER FOR MT1810	1	X
19	K7RS78719	FRONT END PLATE F/MT1810	1	X
20	K721417	BEARING FOR RL305A	1	X
21	K7RS78722	INTERNAL GEAR F/MT1810	1	X
22	K7RS78722	INTERNAL GEAR F/MT1810	1	X
23	K7RS78723	PLANET GEAR F/MT1810	3	X
24	*K7--	PIN (INCLUDED WITH ITEM 25)	3	
25	K7RS78725A	CAGE ASSY W/PINS	1	X
26	*K7RS78726	LOCK RING	1	
27	K7RS227B25	BALL BEARING MT1430,MT1450,60	1	X
28	*K7RS78728	SPACER	1	
29	K7RS78729	OIL CAP F/RL137	1	X
30	K7RS78730	PINION F/RL137	1	X
31	K7RS78731	ANGLE HOUSING F/RL137	1	X
32	K7RS78732	SPINDLE FOR RL137	1	X
34	K7RS78734	GEAR F/RL137	1	K

35	K7RS78735	SET SCREW F/RL137	1	X
36	K7RS78736	KEY WAY F/SPINDLE F/RL137	1	X
37	K7RS78737	BEARING CUP	1	X
38	K7RS78738	RETAINING RING F/RL137	1	X
39	K7RS78739	GEAR F/RL137	1	K
40	K7RS78740	RETAINER RING	1	X
41	K7RS78741	SPRING PIN MT1871R	1	X
42	K7RS78742	REAR GASKET F/RL137	1	X
43	K7RS78743	REAR COVER F/RL137	1	X
44	K7RS87106	CHUCK AND KEY F/RL137	1	X
45	K7RS78745	O RING	1	X
46	K7RS78746	THROTTLE VALVE PLUG F/RL317	1	X
47	K7RS233A29	RETAINING RING SX233A,MT1871R	1	X
48	K7RS233A06	EXHAUST DEFLECTOR SX233A	1	X
49	K7RS78749	SCREW	1	X
50	K779530	SCREW	1	X
51	K7RS78751	SCREW/SPRING	1	X
52	K7RS78752	REVERSE BUSHING	1	X
53	*K7Rs78753	MUFFLER	1	
54	K7RS108A12	BEARING FOR RL838	1	X