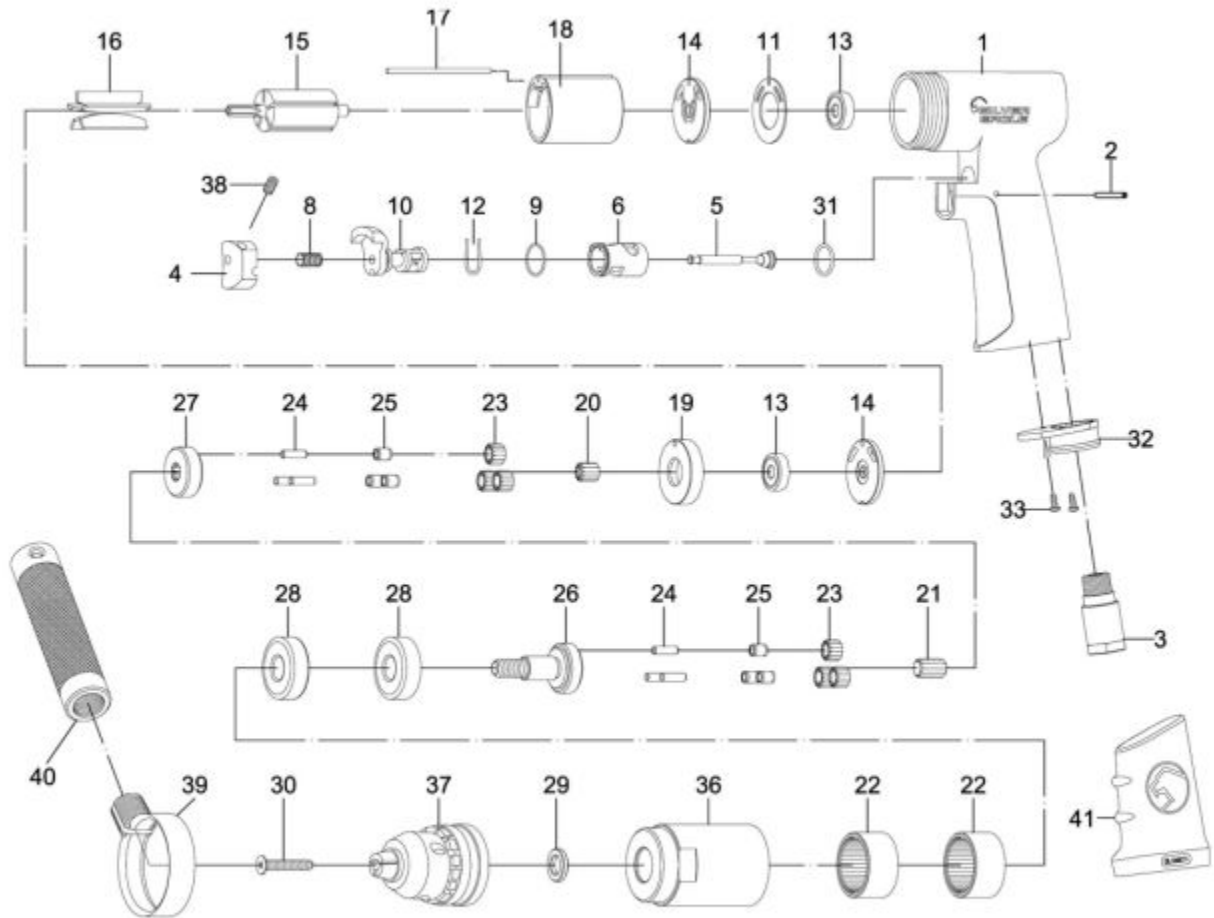


SE155 - 1/2" REVERSIBLE AIR DRILL



Item: SE155

Description: 1/2" REVERSIBLE AIR DRILL

Notes: Also Available: K7RS87109KK Key Only For Jacobs® Chuck. The correct number for the grip is RS82253SE.

Figure No	Part Number	Description	No. Reqd	Warranty Code
1	K7RS82201SE	MOTOR HOUSING F/SE155	1	X
2	K7RS43009	PIN - MINI SANDER	1	X
3	K7RS79403N	AIR INLET F/ MT1827	1	X
4	K779404N	TRIGGER	1	X
5	K7RS79405N	VALVE STEM SET F/RL150	1	X
6	K7RS79406N	REVERSE BUSHING F/RL150	1	X
8	K7RS79408N	VALVE SPRING - REV. AIR DRILL	1	X
9	K7RS79431N	O RING	1	X
10	K7RS79410N	REVERSE LEVER	1	X
11	K7RS79511	MOTOR GASKET F/ RL138	1	X
12	K779412N	REVERSE RETAINER	1	X
13	K7RS79514	END PLATE F/MT1810	2	X
14	K7RS79514	END PLATE F/MT1810	2	X
15	*K7RS79415N	ROTOR	1	
16	K7RS78716	ROTOR BLADE F/MT1810	5	X
17	K7RS78717	PIN F/MT1810	2	X
18	K7RS78718	CYLINDER FOR MT1810	1	X
19	*K7RS79519	SPACER	1	
20	K7RS770420N	PINION GEAR F/RL150	1	X
21	K7RS79421N	CENTER GEAR	1	X
22	K7RS79522	INTERNAL GEAR	2	X
23	K7RS79423N	PLANET GEAR W/BUSHING F/RL150	6	X
26	K7RS79426N	WORK SPINDLE W/PIN	1	X
27	K7RS79427N	REDUCTION SPINDLE W/PINS	1	X
28	K721118	BALL BEARING F/RL450	2	X
29	K779429N	SPACE WASHER FOR RL150	1	X
30	K7RS78630	CHUCK SCREW F/ RL150	1	X
31	K7RS79409N	O RING F/RL150	1	X
32	K7RS76232	EXHAUST DIFFUSER F/MT1889	1	X
33	K7RS43007	SCREW F/RL430	2	X
36	*K7RS79436N	CLAMP NUT	1	
37	K7RS87109	JACOBS CHUCK F/RL150	1	X

38	K7RS79438N	SET SCREW - REV. AIR DRILL	1	X
39	K7RS79439N	RETAINER F/RL150	1	X
40	MT1AV43	HANDLE	1	X
41	K7RS82253SE	RUBBER GRIP F/SE144	1	X