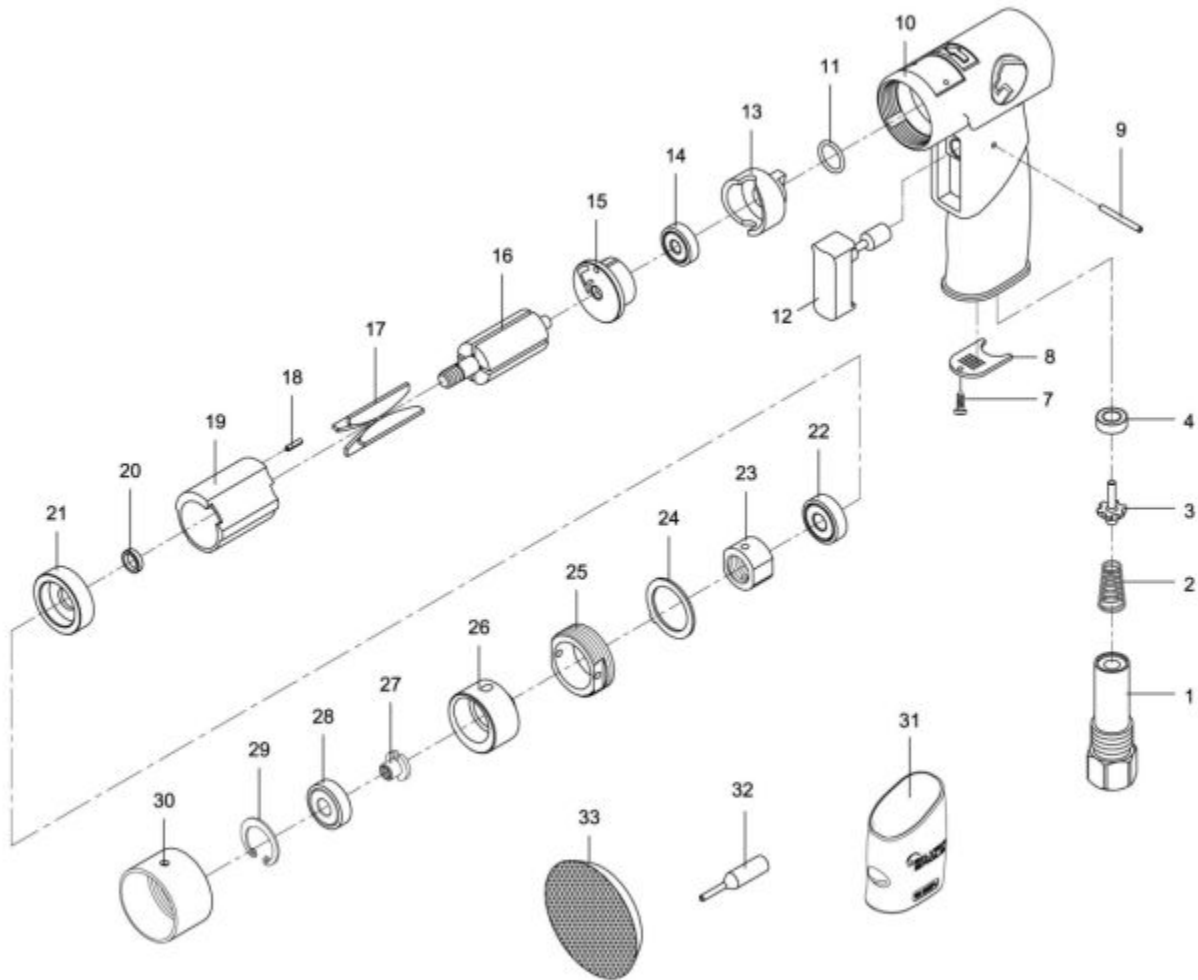


SE430 - MINI DA SANDER



Item: SE430

Description: MINI DA SANDER

Notes: Replacement Discs Available: SE4303320 3" Sanding Disc 320 grit SE4303400 3" Sanding Disc 400 grit SE4303600 3" Sanding Disc 600 grit SE4302320 2" Sanding Disc 320 grit SE4302400 2" Sanding Disc 400 grit SE4302600 2" Sanding Disc 600 grit Also available: RSSE430KCS Molded Case *Note: as of serial number 8172001, #3 RS43003A valve stem and #4 RS43004A rubber spacer have been modified. When replacing existing parts with these new parts in older tools, note that #5 RS43005 valve and #6 RS43006 o-ring are no longer necessary and should be discarded.

Figure No	Part Number	Description	No. Reqd	Warranty Code
1	K7RS43001	AIR INLET F/RL730	1	X
2	K7RS43002	SPRING	1	X
3	K7RS43003A	VALVE STEM F/ SE730	1	X
4	K7RS43004A	RUBBER SPACER F/ SE730	1	X
5	K7RS43005	VALVE	1	X
6	K7RS43006	O RING	1	X
7	K7RS43004	SPACER	1	X
8	K7RS43008	DIFFUSER	1	X
9	K7RS43009	PIN - MINI SANDER	1	X
10	K7RS43010SE	HOUSING F/ RL440	1	X
11	K7RS43011	O RING F/RL440	1	X
12	K7RS43012	TRIGGER FOR RL730	1	X
13	K7RS43013	AIR REGULATOR F/RL440	1	X
14	K721114	BEARING F/RL600	1	X
15	K7RS43015	END PLATE F/RL730	1	X
16	K7RS43016	ROTOR F/SE430	1	X
17	K7RS78816	ROTOR BLADE FOR RL138	4	X
18	K7RS43018	PIN MINI SDR	1	X
19	K7RS43019	CYLINDER F/SE430	1	X
20	K7RS43020	ROTOR BUSHING F/SE430	1	X
21	*K7RS43021	FRONT PLATE	1	
22	K730524	FRONT BEARING	1	X
23	*K7RS43023	CONNECTOR	1	
24	K7RS43024	SPACER FOR RL730	1	X
25	*K7RS43025	MOTOR LOCK NUT	1	
26	*K7RS43026	COUNTER BALANCE	1	
27	K7RS43027	NUT F/RL430K	1	X
28	K7RS43028	BALL BEARINGS F/RL430K	1	X
29	K7RS43029	STOP RING F/RL430K	1	X
30	K7RS43030	GUARD FOR SE430	1	X

31	K7RS43031SE	GRIP F/ SE430	1	X
32	K7RS43032	KEY	1	X
33	SE4302	2" VELCO PAD	1	T
33	SE4303	3" VELCRO PAD	1	T