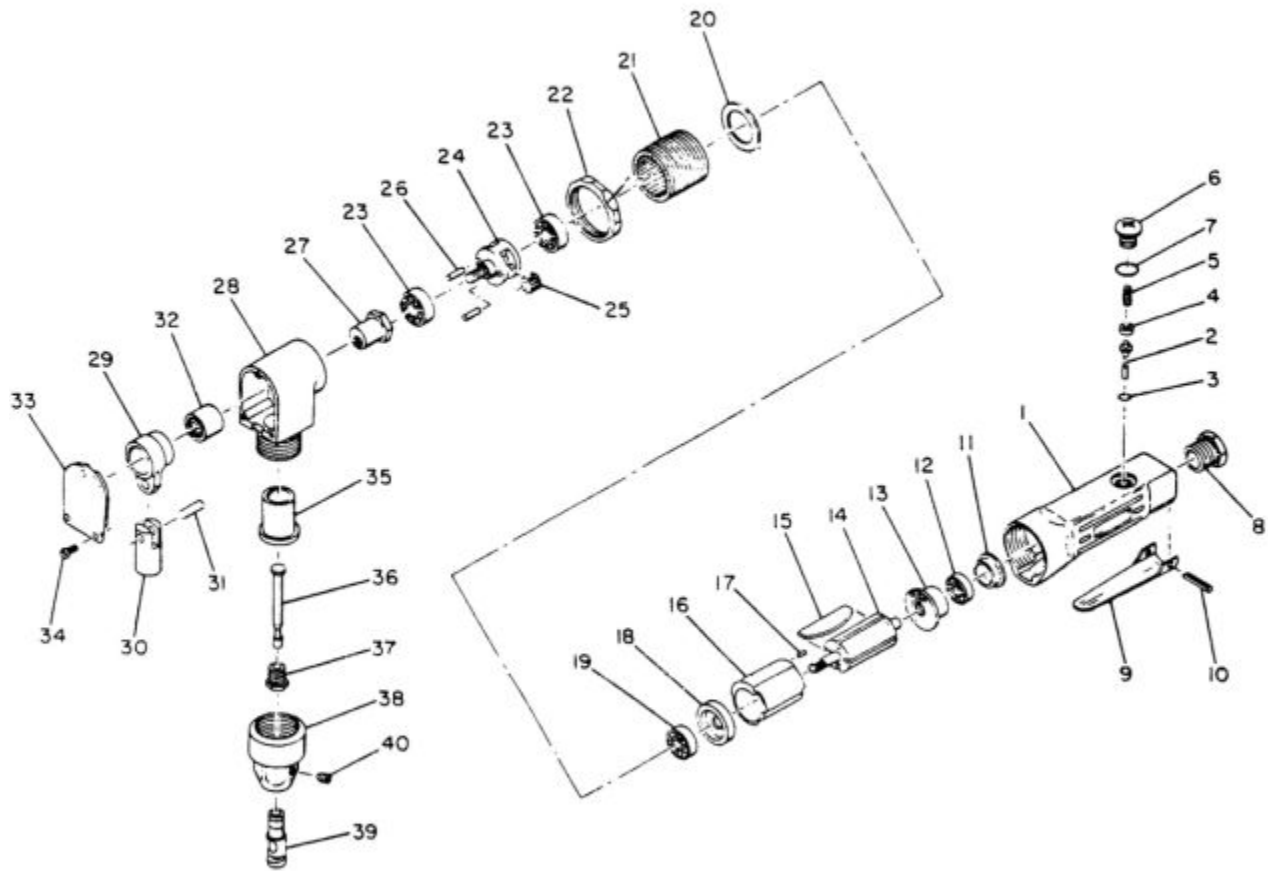


SE835 - AIR NIBBLER



Item: SE835

Description: AIR NIBBLER

**Notes:** \* Available ONLY as RS229B2A assembly including ref. no. 2,3,4,and 5 \*\*Available ONLY as RS229B16A assembly including ref. no 16 and 17 \*\*\*Available ONLY as RS229B29A assembly including ref. no 29, 30, 31 and 32

Figure No	Part Number	Description	No. Reqd	Warranty Code
1	*K7RS229B1SE	MOTOR HOUSING	1	
2	*K7*	THROTTLE VALVE	1	
3	*K7*	THROTTLE VALVE SEAL	1	
4	*K7*	THROTTLE VALVE SPRING SEAT	1	
5	*K7*	THROTTLE VALVE SPRING	1	
6	*K7RS229B6	THROTTLE VALVE PLUG	1	
7	*K7RS229B7	THROTTLE VALVE PLUG SEAT	1	
8	K7RS229B8	INLET BUSHING F/RL835	1	X
9	*K7RS229B9	THROTTLE LEVER	1	
10	*K7RS229B10	THROTTLE LEVER PIN	1	
11	*K7RS229B11	END PLATE CAP	1	
12	K721114	BEARING F/RL600	1	X
13	*K7RS229B13	REAR END PLATE	1	
14	*K7RS229B14	ROTOR	1	
15	K7RS229B15	VANE F/RL835	4	X
16	*K7**	CYLINDER	1	
17	*K7**	CYLINDER DOWEL	1	
18	K7RS229B18	FRONT END PLATE	1	X
19	K730524	FRONT BEARING	1	X
20	*K7RS229B20	MOTOR CLAMP WASHER	1	
21	*K7RS229B21	GEAR CASE	1	
22	*K7RS229B22	GEAR CASE NUT	1	
23	K7RS227B25	BALL BEARING MT1430,MT1450,60	2	X
24	K7RS229B24	SPINDLE F/RL835	1	X
25	*K7RS71125	SPINDLE PLANTER GEAR	2	
26	*K7RS71126	SPINDLE PLANET GEAR SHAFT	2	
27	K7RS229B27	ECCENTRIC NUT F/RL835	1	X
28	K7RS229B28	NIBBLER HOUSING	1	X
29	*K7***	NIBBLER CRANK	1	
30	*K7***	CRANKSHAFT	1	
31	*K7***	CRANKSHAFT PIN	1	
32	*K7***	CRANK BEARING	1	

33	K7RS229B33R	NIBBLER COVER F/RL835	1	X
34	K7RS229B34	HOUSING COVER SCREW F/ RL835	3	X
35	K7RS229B35	CRANKSHAFT BUSHING	1	X
36	K7229-B36	PUNCH PIN F/SX229B	1	X
37	K7229B-37	CUTTER LOCK NUT	1	X
38	K7229B-38	HOUSING NUT F/RL838	1	X
39	K7229-B39	CUTTER DIE	1	X
40	K7RS229B40	CUTTER DIE SET SCREW F/RL835	1	X