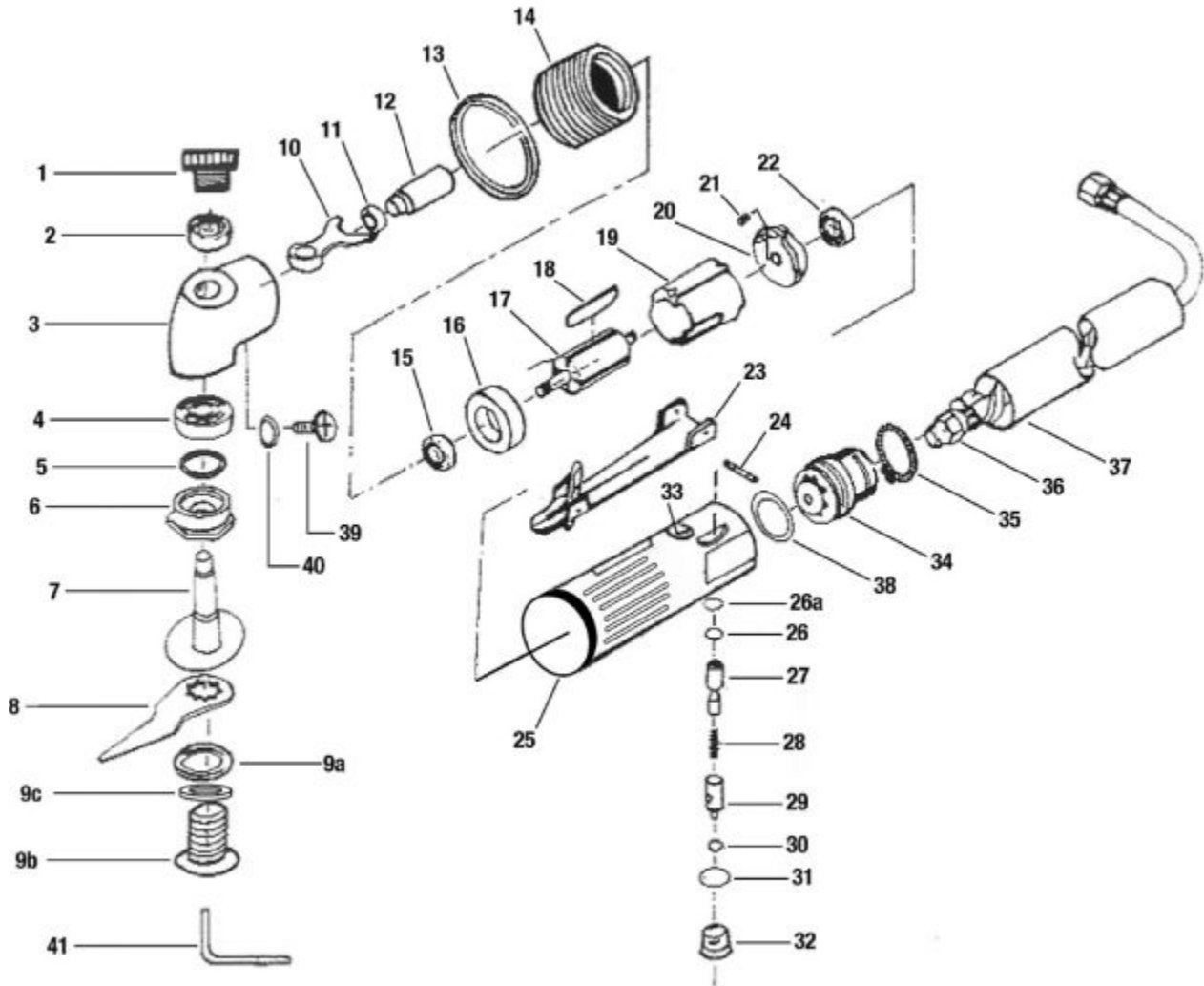


SE838 - AIR KNIFE



Item: SE838

Description: AIR KNIFE

Notes: Replacement Blades (available separately) RL140616 - 15/16" Hook Blade RL140692 - 11/16" Hook Blade
RL140664 - 2-1/4" Offset Blade RL140665 - 3-1/2" Offset Blade RL140669 - 1-3/16" Thin Curved Blade
RL140659 - 3-3/4" Hook Blade

Figure No	Part Number	Description	No. Reqd	Warranty Code
1	K7RS24801	PLUG F/RL838	1	X
2	K7RS108A12	BEARING FOR RL838	1	X
3	K7RS24803	HEAD F/RL838	1	X
4	K7RS24804	6900 BALL BEARING	1	X
5	K7RS24805	OIL SEAL	1	X
6	*K7RS24806	NUT CLAMP	1	
7	K7RS24807	SPINDLE DRIVE	1	X
8	*K7RL140665	BLADE 3 1/2" OFFSET	1	
9	K7RS24809	RETAINER SCREW FOR RL838	1	X
10	K7RS24810	FORK DRIVE	1	X
11	K7RS108A12	BEARING FOR RL838	1	X
12	K7RS24812	CRANK SHAFT F/RL838	1	X
13	K7RS24813	NUT F/RL838	1	X
14	K7RS24814	RETAINER	1	X
15	K710920	BEARING FOR RL500	1	X
16	*K7RS24816	FRONT PLATE	1	
17	*K7RS24817	ROTOR	1	
18	*K7RS24818	ROTOR BLADE	4	
19	*K7RS24819	CYLINDER	1	
20	*K7RS24820	END PLATE	1	
21	*K7RS24821	PIN	1	
22	K7RS24822	826 BALL BEARING FOR RL838	1	X
23	*K7RS24823	THROTTLE LEVER	1	
24	*K7RS24824	LEVER PIN	1	
25	K7RS24825	HOUSING FOR RL838	1	X
26	*K7--	O-RING (26, 26A - 1EA) (INCLUDED WITH #27)	1	
27	*K7RS24827	VALVE STEM (INCLUDES #26, 26A)	1	
28	*K7RS24828	VALVE STEM	1	
29	K7RS24807	SPINDLE DRIVE	1	X
30	*K7--	O-RING (INCLUDED WITH #29)	1	
31	*K7--	O-RING (INCLUDED WITH #32)	1	
32	*K7RS24832	THROTTLE VALVE PLUG (INCLUDES #31)	1	

33	*K7--	VALVE BUSHING (INCLUDED WITH # 25)	1	
34	*K7RS24834	THROTTLE ARBOR	1	
35	*K7RS24835	STOP RING	1	
36	K7RS24836	AIR INLET HOSE F/RL838	1	X
37	K7RS24837	AIR EXHAUST HOSE F/RL838	1	X
38	*K7RS83838	PACKING	1	
39	*K7--	SCREW (INCLUDED WITH #3)	1	
40	*K7--	O-RING (INCLUDED WITH #3)	1	
41	K7RS24839	WRENCH	1	K